

Xanthine Oxidase (XDH) Rabbit PolymAb®

Catalog No.: A22647

Basic Information

Observed MW

150kDa

Calculated MW

146kDa

Category

Primary antibody

Applications

ELISA, WB, IHC-P

Cross-Reactivity

Human, Mouse, Rat

CloneNo number

ARC51278_ARC51279

Background

Xanthine dehydrogenase belongs to the group of molybdenum-containing hydroxylases involved in the oxidative metabolism of purines. The encoded protein has been identified as a moonlighting protein based on its ability to perform mechanistically distinct functions. Xanthine dehydrogenase can be converted to xanthine oxidase by reversible sulfhydryl oxidation or by irreversible proteolytic modification. Defects in xanthine dehydrogenase cause xanthinuria, may contribute to adult respiratory stress syndrome, and may potentiate influenza infection through an oxygen metabolite-dependent mechanism.

Recommended Dilutions

WB 1:500 - 1:1000**IHC-P** 1:50 - 1:200

Immunogen Information

Gene ID

7498

Swiss Prot

P47989

Immunogen

A synthetic peptide of human Xanthine Oxidase (XDH).

Synonyms

XO; XOR; XAN1

Contact

 | 400-999-6126 | cn.market@abclonal.com.cn | www.abclonal.com.cn

Product Information

Source

Rabbit

Isotype

IgG

Purification

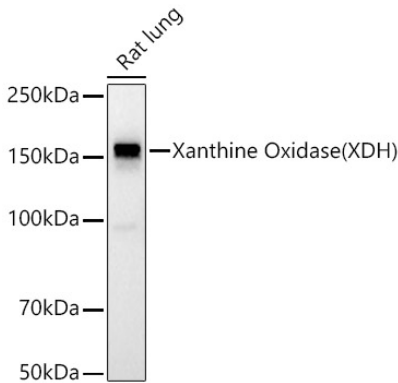
Affinity purification

Storage

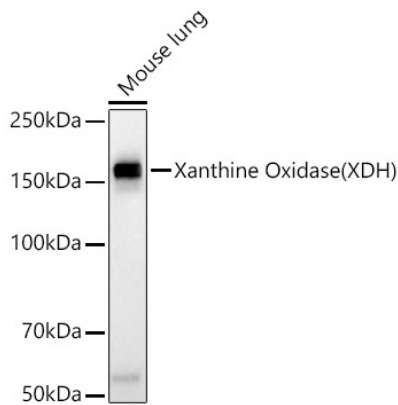
Store at -20°C. Avoid freeze / thaw cycles.

Buffer: PBS with 0.05% proclin300, 0.05% BSA, 50% glycerol, pH7.3.

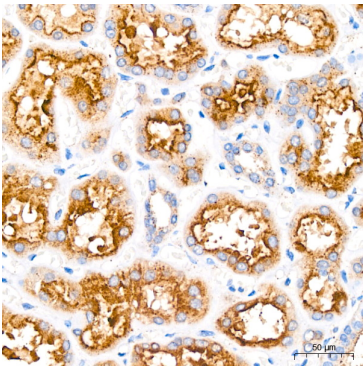
Validation Data



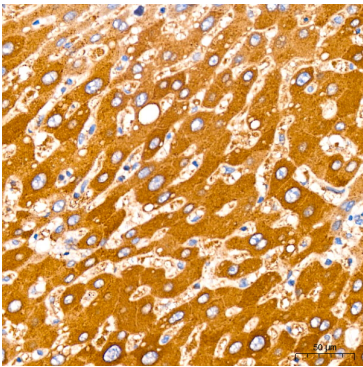
Western blot analysis of lysates from Rat lung, using Xanthine Oxidase (XDH) Rabbit PolymAb® (A22647) at 1:1000 dilution.
Secondary antibody: HRP Goat Anti-Rabbit IgG (H+L) (AS014) at 1:10000 dilution.
Lysates/proteins: 25µg per lane.
Blocking buffer: 3% nonfat dry milk in TBST.
Detection: ECL Basic Kit (RM00020).
Exposure time: 1s.



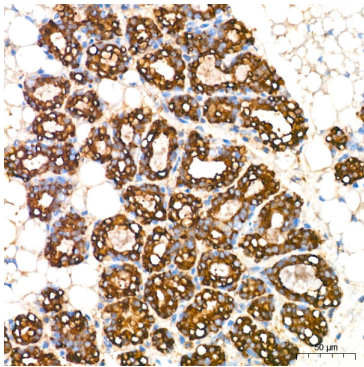
Western blot analysis of lysates from Mouse lung, using Xanthine Oxidase (XDH) Rabbit PolymAb® (A22647) at 1:1000 dilution.
Secondary antibody: HRP Goat Anti-Rabbit IgG (H+L) (AS014) at 1:10000 dilution.
Lysates/proteins: 25µg per lane.
Blocking buffer: 3% nonfat dry milk in TBST.
Detection: ECL Basic Kit (RM00020).
Exposure time: 30s.



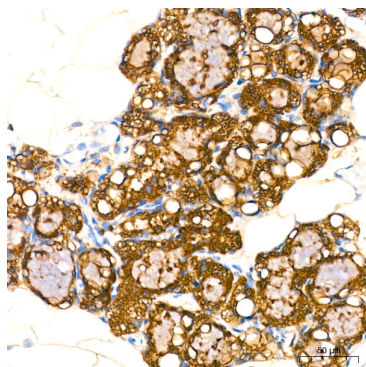
Immunohistochemistry analysis of Xanthine Oxidase (XDH) in paraffin-embedded human kidney tissue using Xanthine Oxidase (XDH) Rabbit PolymAb® (A22647) at a dilution of 1:200 (40x lens). High pressure antigen retrieval was performed with 0.01 M citrate buffer (pH 6.0) prior to IHC staining.



Immunohistochemistry analysis of Xanthine Oxidase (XDH) in paraffin-embedded mouse liver tissue using Xanthine Oxidase (XDH) Rabbit PolymAb® (A22647) at a dilution of 1:200 (40x lens). High pressure antigen retrieval was performed with 0.01 M citrate buffer (pH 6.0) prior to IHC staining.



Immunohistochemistry analysis of Xanthine Oxidase (XDH) in paraffin-embedded mouse breast tissue using Xanthine Oxidase (XDH) Rabbit PolymAb® (A22647) at a dilution of 1:200 (40x lens). High pressure antigen retrieval was performed with 0.01 M citrate buffer (pH 6.0) prior to IHC staining.



Immunohistochemistry analysis of Xanthine Oxidase (XDH) in paraffin-embedded rat breast tissue using Xanthine Oxidase (XDH) Rabbit PolymAb® (A22647) at a dilution of 1:200 (40x lens). High pressure antigen retrieval was performed with 0.01 M citrate buffer (pH 6.0) prior to IHC staining.