

# CD328 Rabbit pAb

Catalog No.: A22679

## Basic Information

### Observed MW

70kDa

### Calculated MW

51kDa

### Category

Primary antibody

### Applications

ELISA, WB

### Cross-Reactivity

Human

## Background

Predicted to enable sialic acid binding activity. Predicted to be involved in cell adhesion. Predicted to be integral component of plasma membrane. Predicted to be active in plasma membrane.

## Recommended Dilutions

WB 1:500 - 1:1000

## Immunogen Information

### Gene ID

27036

### Swiss Prot

Q9Y286

### Immunogen

Recombinant protein of human CD328.

### Synonyms

p75; QA79; AIRM1; CD328; AIRM-1; CDw328; D-siglec; SIGLEC-7; SIGLECP2; SIGLEC19P; p75/AIRM1

## Contact

☎ | 400-999-6126

✉ | [cn.market@abclonal.com.cn](mailto:cn.market@abclonal.com.cn)

🌐 | [www.abclonal.com.cn](http://www.abclonal.com.cn)

## Product Information

### Source

Rabbit

### Isotype

IgG

### Purification

Affinity purification

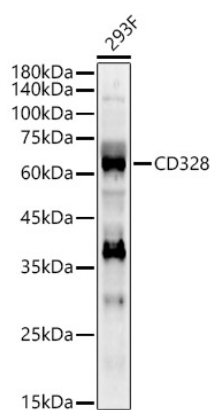
### Storage

Store at -20°C. Avoid freeze / thaw cycles.

Buffer: PBS with 0.02% sodium azide, 50% glycerol, pH 7.3.

## Validation Data

---



Western blot analysis of 293F, using CD328 antibody (A22679) at 1:1000 dilution.  
Secondary antibody: HRP Goat Anti-Rabbit IgG (H+L) (AS014) at 1:10000 dilution.  
Lysates/proteins: 25µg per lane.  
Blocking buffer: 3% nonfat dry milk in TBST.  
Detection: ECL Enhanced Kit (RM00021).  
Exposure time: 60s.