

ABflo® 647 Rabbit anti-Mouse Ly-6A/E (Sca-1) mAb

Catalog No.: A22787

Basic Information

Observed MW

Refer to figures

Calculated MW

14kDa

Category

Primary antibody

Applications

FC

Cross-Reactivity

Mouse

CloneNo number

ARC57786-ABf647

Conjugate

ABflo® 647. Ex:648nm. Em:664nm.

Recommended Dilutions

FC 5 µl per 10⁶ cells in
100 µl volume

Background

Predicted to enable acetylcholine receptor binding activity and acetylcholine receptor inhibitor activity. Acts upstream of or within response to bacterium. Located in external side of plasma membrane. Is expressed in alimentary system; hindlimb tendon; liver; metanephros; and physiological umbilical hernia. Used to study osteoporosis. Orthologous to human LY6H (lymphocyte antigen 6 family member H).

Immunogen Information

Gene ID

110454

Swiss Prot

P08648

Immunogen

Recombinant fusion protein containing a sequence corresponding to amino acids 27-111 of Mouse Ly-6A/E (Sca-1)(NP_034868.1)


Synonyms

TAP; Sca1; Sca-1; Ly-6A.2; Ly-6A/E; Ly-6E.1

Contact

 | 400-999-6126

 | cn.market@abclonal.com.cn

 | www.abclonal.com.cn

Product Information

Source

Rabbit

Isotype

IgG

Purification

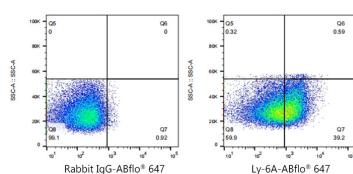
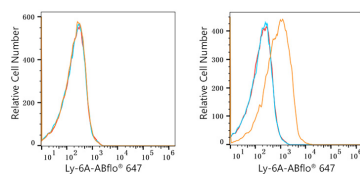
Affinity purification

Storage

Store at 2-8°C. Avoid freeze.

Buffer: PBS with 0.03% proclin300,0.2% BSA,pH7.3.

Validation Data



Flow cytometry: 1×10^6 RAW 264.7 cells (negative control, Left) and C57BL/6 mouse splenocytes (Right) were surface-stained with ABflo® 647 Rabbit anti-Mouse Ly-6A/E (Sca-1) mAb (A22787, 5 µl/Test, orange line) or ABflo® 647 Rabbit IgG isotype control (A22070, 5 µl/Test, blue line). Non-fluorescently stained cells were used as blank control (red line).

Flow cytometry: 1×10^6 C57BL/6 mouse splenocytes were surface-stained with ABflo® 647 Rabbit IgG isotype control (A22070, 5 µl/Test, left) or ABflo® 647 Rabbit anti-Mouse Ly-6A/E (Sca-1) mAb (A22787, 5 µl/Test, right).