

FPR2 Rabbit pAb

Catalog No.: A23059

Basic Information

Observed MW

Refer to figures

Calculated MW

39kDa

Category

Primary antibody

Applications

ELISA,IF/ICC

Cross-Reactivity

Human, Mouse, Rat

Background

Enables amyloid-beta binding activity; scavenger receptor binding activity; and signaling receptor activity. Involved in several processes, including cellular response to amyloid-beta; positive regulation of monocyte chemotaxis; and regulation of defense response. Located in cytoplasm and plasma membrane.

Recommended Dilutions

IF/ICC 1:50 - 1:200

Immunogen Information

Gene ID

2358

Swiss Prot

P25090

Immunogen

Recombinant fusion protein containing a sequence corresponding to amino acids 1-100 of human FPR2. (NP_001453.1).

Synonyms

ALX; ALXR; HM63; FMLPX; FPR2A; FPRH1; FPRH2; FPRL1; LXA4R; FMLP-R-II; FPR2

Contact

☎ | 400-999-6126

✉ | cn.market@abclonal.com.cn

🌐 | www.abclonal.com.cn

Product Information

Source

Rabbit

Isotype

IgG

Purification

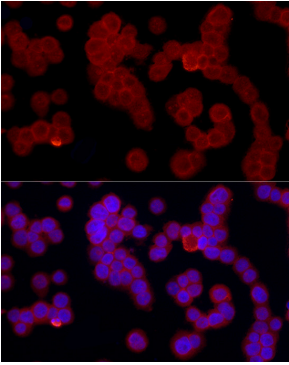
Affinity purification

Storage

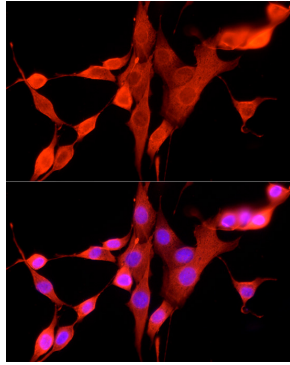
Store at -20°C. Avoid freeze / thaw cycles.

Buffer: PBS with 0.02% sodium azide,50% glycerol,pH7.3.

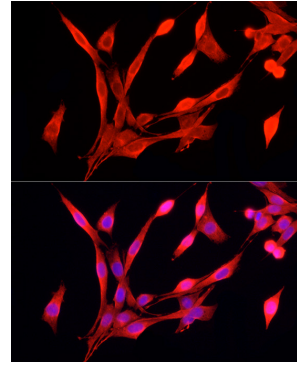
Validation Data



Immunofluorescence analysis of HL-60 cells using FPR2 Rabbit pAb (A23059) at dilution of 1:50 (40x lens). Secondary antibody: Cy3 Goat Anti-Rabbit IgG (H+L) (AS007) at 1:500 dilution. Blue: DAPI for nuclear staining.



Immunofluorescence analysis of NIH/3T3 cells using FPR2 Rabbit pAb (A23059) at dilution of 1:50 (40x lens). Secondary antibody: Cy3 Goat Anti-Rabbit IgG (H+L) (AS007) at 1:500 dilution. Blue: DAPI for nuclear staining.



Immunofluorescence analysis of PC-12 cells using FPR2 Rabbit pAb (A23059) at dilution of 1:50 (40x lens). Secondary antibody: Cy3 Goat Anti-Rabbit IgG (H+L) (AS007) at 1:500 dilution. Blue: DAPI for nuclear staining.