

TriMethyl-Histone H3-K36 Rabbit pAb

Catalog No.: A2366

14 Publications

Basic Information

Observed MW

17kDa

Calculated MW

16kDa

Category

Primary antibody

Applications

ELISA,DB,WB,IHC-P,IF/ICC,ChIP,ChIP-seq

Cross-Reactivity

Human, Mouse, Rat, Other (Wide Range Predicted)

Background

Histones are basic nuclear proteins that are responsible for the nucleosome structure of the chromosomal fiber in eukaryotes. Nucleosomes consist of approximately 146 bp of DNA wrapped around a histone octamer composed of pairs of each of the four core histones (H2A, H2B, H3, and H4). The chromatin fiber is further compacted through the interaction of a linker histone, H1, with the DNA between the nucleosomes to form higher order chromatin structures. This gene is intronless and encodes a replication-dependent histone that is a member of the histone H3 family. Transcripts from this gene lack polyA tails; instead, they contain a palindromic termination element. This gene is located separately from the other H3 genes that are in the histone gene cluster on chromosome 6p22-p21.3.

Recommended Dilutions

DB	1:500 - 1:2000
WB	1:500 - 1:1000
IHC-P	1:50 - 1:200
IF/ICC	1:50 - 1:200
ChIP	5µg antibody for 5µg-10µg of Chromatin
ChIP-seq	1:20 - 1:100

Contact

☎	400-999-6126
✉	cn.market@abclonal.com.cn
🌐	www.abclonal.com.cn

Immunogen Information

Gene ID

8290/8350

Swiss Prot

Q16695/P68431

Immunogen

A synthetic peptide corresponding to a sequence within amino acids 1-100 of human histone H3 (NP_003520.1).

Synonyms

H3t; H3.4; H3/g; H3FT; H3C16; HIST3H3; TriMethyl-Histone H3-K36

Product Information

Source

Rabbit

Isotype

IgG

Purification

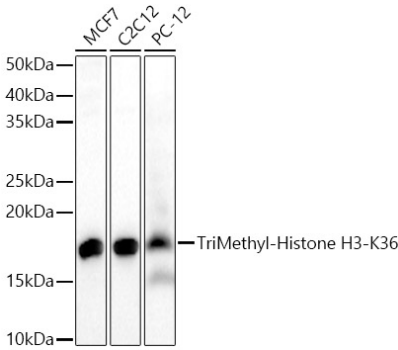
Affinity purification

Storage

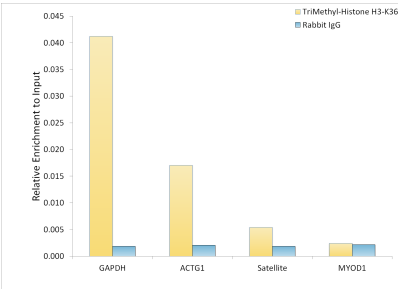
Store at -20°C. Avoid freeze / thaw cycles.

Buffer: PBS with 0.05% proclin300,50% glycerol,pH7.3.

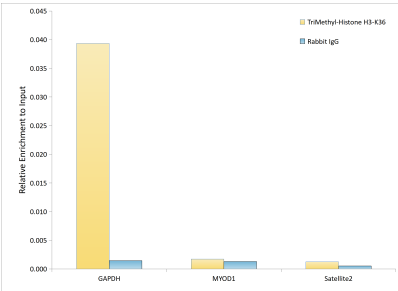
Validation Data



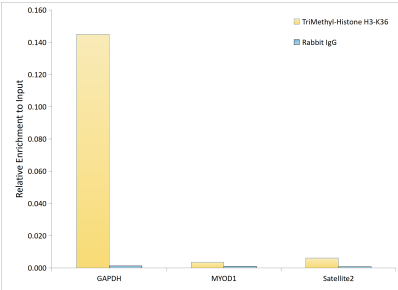
Western blot analysis of various lysates, using TriMethyl-Histone H3-K36 Rabbit pAb (A2366) at 1:400 dilution.
Secondary antibody: HRP Goat Anti-Rabbit IgG (H+L) (AS014) at 1:10000 dilution.
Lysates/proteins: 25ug per lane.
Blocking buffer: 3% nonfat dry milk in TBST.
Detection: ECL Basic Kit (RM00020).
Exposure time: 60s.



Chromatin immunoprecipitation was performed with 5 µg of cross-linked chromatin from HeLa, using 5 µg of TriMethyl-Histone H3-K36 Rabbit pAb (A2366) and Rabbit IgG isotype control (AC042). The enrichment of immunoprecipitated DNA at different genomic loci was examined by quantitative PCR. The histogram compares the ratio of the immunoprecipitated DNA to the input at given loci.

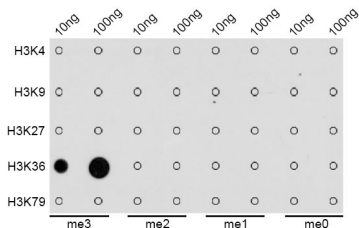


Chromatin immunoprecipitation analysis of extracts of HeLa cells, using TriMethyl-Histone H3-K36 antibody (A2366) and rabbit IgG. The amount of immunoprecipitated DNA was checked by quantitative PCR. Histogram was constructed by the ratios of the immunoprecipitated DNA to the input.

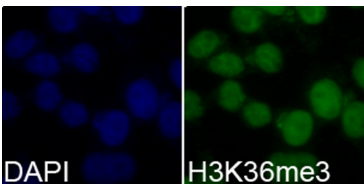


Chromatin immunoprecipitation analysis of extracts of HeLa cells, using TriMethyl-Histone H3-K36 Rabbit pAb antibody (A2366) and rabbit IgG. The amount of immunoprecipitated DNA was checked by quantitative PCR. Histogram was constructed by the ratios of the immunoprecipitated DNA to the input.

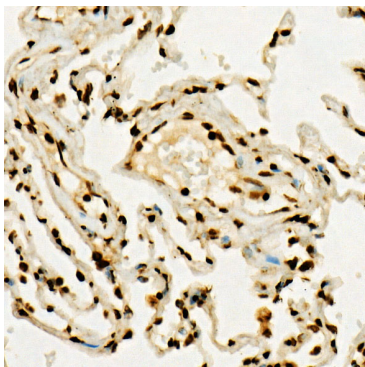
Validation Data



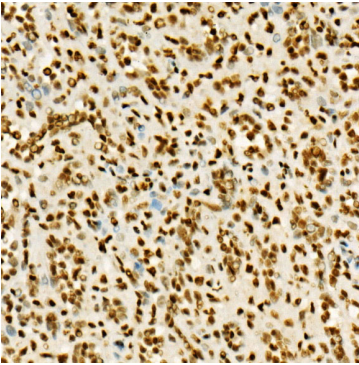
Dot-blot analysis of all sorts of methylation peptides using TriMethyl-Histone H3-K36 antibody (A2366).



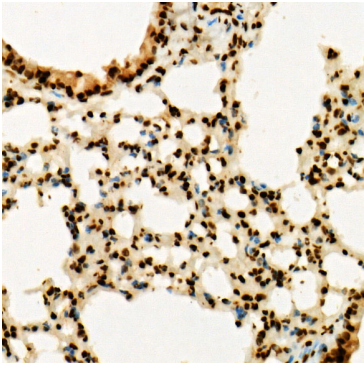
Immunofluorescence analysis of 293T cells using TriMethyl-Histone H3-K36 Rabbit pAb (A2366). Blue: DAPI for nuclear staining.



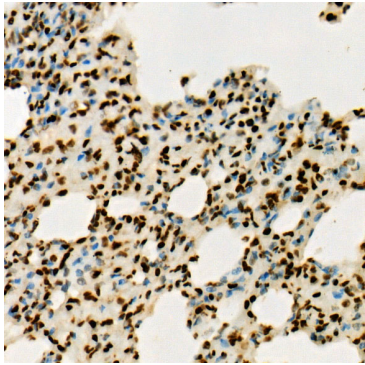
Immunohistochemistry analysis of TriMethyl-Histone H3-K36 in paraffin-embedded human lung using TriMethyl-Histone H3-K36 Rabbit pAb (A2366) at dilution of 1:100 (40x lens).Perform high pressure antigen retrieval with 10 mM citrate buffer pH 6.0 before commencing with IHC staining protocol.



Immunohistochemistry analysis of TriMethyl-Histone H3-K36 in paraffin-embedded human spleen using TriMethyl-Histone H3-K36 Rabbit pAb (A2366) at dilution of 1:100 (40x lens).Perform high pressure antigen retrieval with 10 mM citrate buffer pH 6.0 before commencing with IHC staining protocol.



Immunohistochemistry analysis of TriMethyl-Histone H3-K36 in paraffin-embedded mouse lung using TriMethyl-Histone H3-K36 Rabbit pAb (A2366) at dilution of 1:100 (40x lens).Perform high pressure antigen retrieval with 10 mM citrate buffer pH 6.0 before commencing with IHC staining protocol.



Immunohistochemistry analysis of TriMethyl-Histone H3-K36 in paraffin-embedded rat lung using TriMethyl-Histone H3-K36 Rabbit pAb (A2366) at dilution of 1:100 (40x lens).Perform high pressure antigen retrieval with 10 mM citrate buffer pH 6.0 before commencing with IHC staining protocol.