

Symmetric DiMethyl-Histone H3-R8 Rabbit pAb

Catalog No.: A2374

4 Publications

Basic Information

Observed MW

17kDa

Calculated MW

16kDa

Category

Primary antibody

Applications

ELISA, WB, IHC-P, IF/ICC, ChIP-seq

Cross-Reactivity

Human, Mouse, Rat, Other (Wide Range Predicted)

Background

Histones are basic nuclear proteins that are responsible for the nucleosome structure of the chromosomal fiber in eukaryotes. Nucleosomes consist of approximately 146 bp of DNA wrapped around a histone octamer composed of pairs of each of the four core histones (H2A, H2B, H3, and H4). The chromatin fiber is further compacted through the interaction of a linker histone, H1, with the DNA between the nucleosomes to form higher order chromatin structures. This gene is intronless and encodes a replication-dependent histone that is a member of the histone H3 family. Transcripts from this gene lack polyA tails; instead, they contain a palindromic termination element. This gene is located separately from the other H3 genes that are in the histone gene cluster on chromosome 6p22-p21.3.

Recommended Dilutions

WB	1:100 - 1:500
IHC-P	1:50 - 1:200
IF/ICC	1:50 - 1:200
ChIP-seq	1:20 - 1:50

Immunogen Information

Gene ID

8290/8350

Swiss Prot

Q16695/P68431

Immunogen

A synthetic symmetric dimethylated peptide around R8 of human histone H3 (NP_003520.1).

Synonyms

H3t; H3.4; H3/g; H3FT; H3C16; HIST3H3; Symmetric DiMethyl-Histone H3-R8

Contact

☎	400-999-6126
✉	cn.market@abclonal.com.cn
🌐	www.abclonal.com.cn

Product Information

Source

Rabbit

Isotype

IgG

Purification

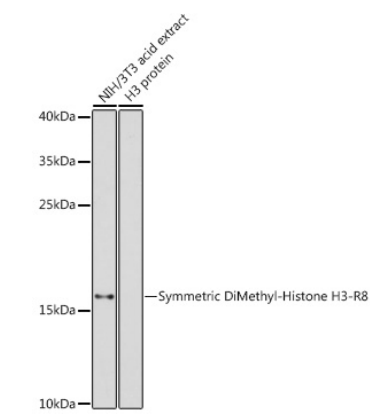
Affinity purification

Storage

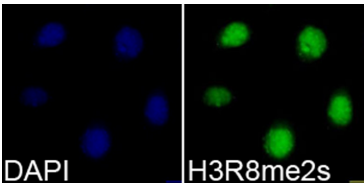
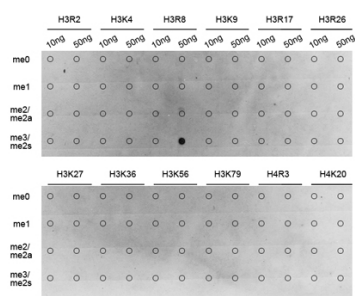
Store at -20°C. Avoid freeze / thaw cycles.

Buffer: PBS with 0.02% sodium azide, 50% glycerol, pH7.3.

Validation Data



Western blot analysis of lysates from NIH/3T3 cells, using Symmetric DiMethyl-Histone H3-R8 Rabbit pAb (A2374) at 1:500 dilution.
Secondary antibody: HRP Goat Anti-Rabbit IgG (H+L) (AS014) at 1:10000 dilution.
Lysates/proteins: 25µg per lane.
Blocking buffer: 3% nonfat dry milk in TBST.
Detection: ECL Enhanced Kit (RM00021).
Exposure time: 180s.



Dot-blot analysis of all sorts of methylation peptides using Symmetric DiMethyl-Histone H3-R8 antibody (A2374).

Immunofluorescence analysis of 293T cells using Symmetric DiMethyl-Histone H3-R8 Rabbit pAb (A2374). Blue: DAPI for nuclear staining.