

PE Rabbit anti-Mouse CD56/NCAM mAb

Catalog No.: A23749

Basic Information

Observed MW

Calculated MW

67KDa/80KDa/93KDa/119KDa

Category

Primary antibody

Applications

FC

Cross-Reactivity

Mouse

CloneNo number

ARC60214

Conjugate

PE. Ex:565nm. Em:574nm.

Background

Predicted to enable LRR domain binding activity and phosphatase binding activity. Involved in commissural neuron axon guidance and regulation of semaphorin-plexin signaling pathway. Acts upstream of or within several processes, including homotypic cell-cell adhesion; positive regulation of calcium-mediated signaling; and regulation of exocyst assembly. Located in several cellular components, including external side of plasma membrane; growth cone; and neuronal cell body. Is expressed in several structures, including embryo mesenchyme; nervous system; sensory organ; skin; and urinary system. Human ortholog(s) of this gene implicated in bipolar disorder; middle cerebral artery infarction; and pancreatic cancer. Orthologous to human NCAM1 (neural cell adhesion molecule 1).

Recommended Dilutions

FC 5 µl per 10⁶ cells in
100 µl volume

Immunogen Information

Gene ID

17967

Swiss Prot

P13595

Immunogen

Recombinant protein (or fragment). This information is considered to be commercially sensitive.

Synonyms

CD56; Ncam; E-NCAM; NCAM-1

Contact

☎ | 400-999-6126

✉ | cn.market@abclonal.com.cn

🌐 | www.abclonal.com.cn

Product Information

Source

Rabbit

Isotype

IgG

Purification

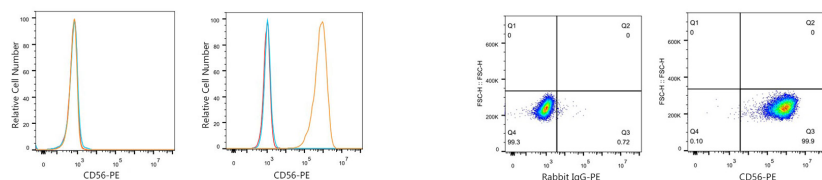
Affinity purification

Storage

Store at 2-8°C. Avoid freeze.

Buffer: PBS containing 0.2% BSA, preserved with proclin300 or sodium azide (as specified on the Certificate of Analysis), pH 7.3.

Validation Data



Flow cytometry: 1×10^6 L-929 cells (negative control, left) and Neuro-2a cells (right) were surface-stained with PE Rabbit anti-Mouse CD56/NCAM mAb (A23749, 5 μ l/Test, orange line) or PE Rabbit IgG isotype control (5 μ l/Test, blue line). Non-fluorescently stained cells were used as blank control (red line).

Flow cytometry: 1×10^6 Neuro-2a cells were surface-stained with PE Rabbit IgG isotype control (5 μ l/Test, left) or PE Rabbit anti-Mouse CD56/NCAM mAb (A23749, 5 μ l/Test, right).