

# pan 14-3-3 Rabbit mAb

**Catalog No.: A23829** Recombinant

## Basic Information

**Observed MW**

30kDa

**Calculated MW**

27kDa/28kDa/29kDa

**Category**

Primary antibody

**Applications**

WB,IF/ICC,ELISA

**Cross-Reactivity**

Human, Mouse, Rat

**CloneNo number**

ARC59297

## Background

This gene product belongs to the 14-3-3 family of proteins which mediate signal transduction by binding to phosphoserine-containing proteins. This highly conserved protein family is found in both plants and mammals, and this protein is 99% identical to the mouse and rat orthologs. This gene is upregulated in patients with amyotrophic lateral sclerosis. It contains in its 5' UTR a 6 bp tandem repeat sequence which is polymorphic, however, there is no correlation between the repeat number and the disease. This gene encodes a protein belonging to the 14-3-3 family of proteins, members of which mediate signal transduction by binding to phosphoserine-containing proteins. This highly conserved protein family is found in both plants and mammals. The encoded protein has been shown to interact with RAF1 and CDC25 phosphatases, suggesting that it may play a role in linking mitogenic signaling and the cell cycle machinery. Two transcript variants, which encode the same protein, have been identified for this gene.

## Recommended Dilutions

**WB** 1:1500 - 1:9000

**IF/ICC** 1:200 - 1:2000

**ELISA** Recommended starting concentration is 1 µg/mL. Please optimize the concentration based on your specific assay requirements.

## Immunogen Information

**Gene ID**

10971/7529/7532/7531/7534/7533/2810

**Swiss Prot**

P27348/P31946/P61981/P62258/P63104/Q04917/P31947

**Immunogen**

Synthetic peptide. This information is considered to be commercially sensitive.

**Synonyms**

1C5; HS1; 14-3-3; GW128; YWHAA; KCIP-1; HEL-S-1; HEL4; YWHAD; HEL-S-3; POPCHAS; HEL-S-93; 14-3-3-zeta; pan 14-3-3

## Contact

 | 400-999-6126

 | [cn.market@abclonal.com.cn](mailto:cn.market@abclonal.com.cn)
 | [www.abclonal.com.cn](http://www.abclonal.com.cn)

## Product Information

**Source**

Rabbit

**Isotype**

IgG

**Purification**

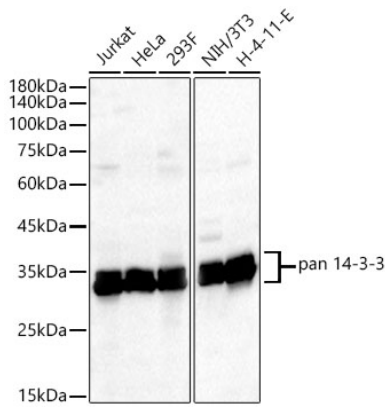
Affinity purification

**Storage**

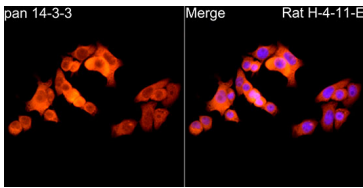
Store at -20°C. Avoid freeze / thaw cycles.

Buffer: PBS containing 50% glycerol and 0.05% BSA, preserved with proclin300 or sodium azide (as specified on the Certificate of Analysis), pH 7.3.

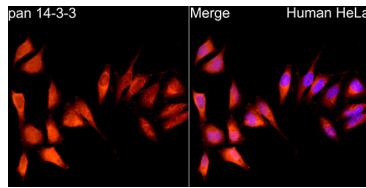
## Validation Data



Western blot analysis of various lysates, using pan 14-3-3 Rabbit mAb (A23829) at 1:1500 dilution. Secondary antibody: HRP-conjugated Goat anti-Rabbit IgG (H+L) (AS014) at 1:10000 dilution. Lysates/proteins: 25µg per lane. Blocking buffer: 3% nonfat dry milk in TBST. Detection: ECL Basic Kit (RM00020). Exposure time: 10s.



Immunofluorescence analysis of H-4-11-E cells using pan 14-3-3 Rabbit mAb (A23829) at dilution of 1:200 (40x lens). Secondary antibody: Cy3-conjugated Goat anti-Rabbit IgG (H+L) (AS007) at 1:500 dilution. Blue: DAPI for nuclear staining.



Immunofluorescence analysis of HeLa cells using pan 14-3-3 Rabbit mAb (A23829) at dilution of 1:200 (40x lens). Secondary antibody: Cy3-conjugated Goat anti-Rabbit IgG (H+L) (AS007) at 1:500 dilution. Blue: DAPI for nuclear staining.