

MonoMethyl-Histone H3-K36 Rabbit mAb

Catalog No.: A23944 **Recombinant**

Basic Information

Observed MW

17kDa

Calculated MW

15kDa

Category

Primary antibody

Applications

ELISA, WB, IP, ChIP, DB

Cross-Reactivity

Human, Mouse, Rat, Other (Wide Range Predicted)

CloneNo number

ARC61490

Background

Histones are basic nuclear proteins that are responsible for the nucleosome structure of the chromosomal fiber in eukaryotes. This structure consists of approximately 146 bp of DNA wrapped around a nucleosome, an octamer composed of pairs of each of the four core histones (H2A, H2B, H3, and H4). The chromatin fiber is further compacted through the interaction of a linker histone, H1, with the DNA between the nucleosomes to form higher order chromatin structures. This gene is intronless and encodes a replication-dependent histone that is a member of the histone H3 family. Transcripts from this gene lack polyA tails; instead, they contain a palindromic termination element. This gene is found in the large histone gene cluster on chromosome 6p22-p21.3.

Recommended Dilutions

WB 1:1000 - 1:5000**IP** 0.5µg-4µg antibody for
200µg-400µg extracts of
whole cells**ChIP** 5µg antibody for
5µg-10µg of Chromatin**DB** 1:1000 - 1:5000

Immunogen Information

Gene ID

8290/8350

Swiss Prot

Q16695/P68431

Immunogen

A synthetic monomethylated peptide around K36 of human histone H3 (NP_003520.1).

Synonyms

H3/A; H3C2; H3C3; H3C4; H3C6; H3C7; H3C8; H3FA; H3C10; H3C11; H3C12; HIST1H3A; MonoMethyl-Histone H3-K36

Contact

 | 400-999-6126 | cn.market@abclonal.com.cn | www.abclonal.com.cn

Product Information

Source

Rabbit

Isotype

IgG

Purification

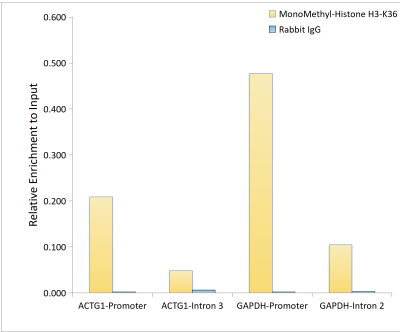
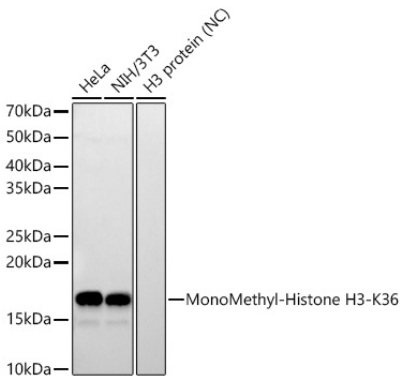
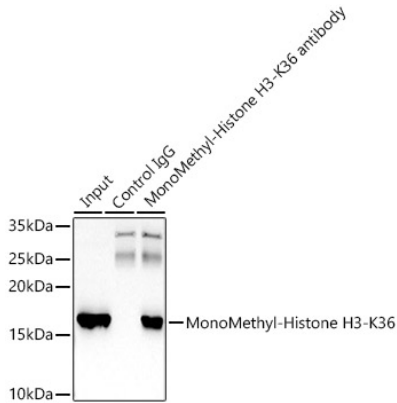
Affinity purification

Storage

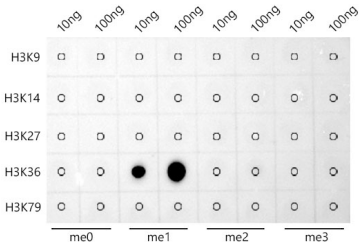
Store at -20°C. Avoid freeze / thaw cycles.

Buffer: PBS with 0.05% proclin300, 0.05% BSA, 50% glycerol, pH7.3.

Validation Data



Validation Data



Dot-blot analysis of all sorts of peptides using MonoMethyl-Histone H3-K36 Rabbit mAb (A23944) at 1:2000 dilution.