

# CD96 Rabbit mAb

Catalog No.: A23958 **Recombinant**

## Basic Information

**Observed MW**

160kDa

**Calculated MW**

65kDa

**Category**

Primary antibody

**Applications**

ELISA, WB, FC

**Cross-Reactivity**

Human

**CloneNo number**

ARC62525

## Background

CD96 (cluster of differentiation 96) belongs to the IgG (immunoglobulin) superfamily receptors. It is expressed in the spinal cord, kidney, trachea, digestive tissues, prostate, placenta, bone of adults and fetal brain and liver. This gene is located on human chromosome 3q13. The protein encoded by this gene belongs to the immunoglobulin superfamily. It is a type I membrane protein. The protein may play a role in the adhesive interactions of activated T and NK cells during the late phase of the immune response. It may also function in antigen presentation. Alternative splicing occurs at this locus and two transcript variants encoding distinct isoforms have been identified.

## Recommended Dilutions

**WB** 1:500 - 1:1000**FC** 1:500 - 1:1000

## Immunogen Information

**Gene ID**

10225

**Swiss Prot**

P40200

**Immunogen**

Recombinant protein of human CD96.

**Synonyms**

Cell surface antigen CD96; CD96

## Contact

 | 400-999-6126 | [cn.market@abclonal.com.cn](mailto:cn.market@abclonal.com.cn) | [www.abclonal.com.cn](http://www.abclonal.com.cn)

## Product Information

**Source**

Rabbit

**Isotype**

IgG

**Purification**

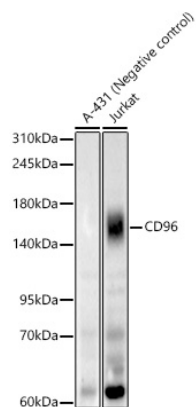
Affinity purification

**Storage**

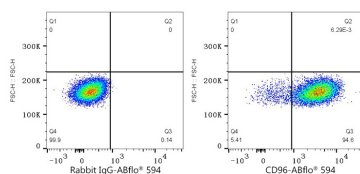
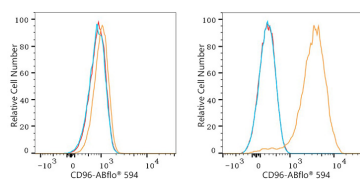
Store at -20°C. Avoid freeze / thaw cycles.

Buffer: PBS with 0.05% proclin300, 0.05% BSA, 50% glycerol, pH7.3.

## Validation Data



Western blot analysis of various lysates, using CD96 Rabbit mAb (A23958) at 1:1000 dilution.  
 Secondary antibody: HRP Goat Anti-Rabbit IgG (H+L) (AS014) at 1:10000 dilution.  
 Lysates/proteins: 25ug per lane.  
 Blocking buffer: 3% nonfat dry milk in TBST.  
 Detection: ECL Basic Kit (RM00020).  
 Exposure time: 180s.



Flow cytometry:  $1 \times 10^6$  HeLa cells (negative control, left) and MOLT-4 (right) cells were surface-stained with Human CD96 mAb (A23958, 2  $\mu\text{g}/\text{mL}$ , orange line) or ABflo® 594 Rabbit IgG isotype control (A23821, 5  $\mu\text{L}/\text{Test}$ , blue line), followed by ABflo® 594 conjugated goat anti-rabbit pAb staining. Non-fluorescently stained cells were used as blank control (red line).

Flow cytometry:  $1 \times 10^6$  MOLT-4 cells were surface-stained with ABflo® 594 Rabbit IgG isotype control (A23821, 5  $\mu\text{L}/\text{Test}$ , left) or Human CD96 mAb (A23958, 2  $\mu\text{g}/\text{mL}$ , right).