

[KO Validated] PCIF1 Rabbit mAb

Catalog No.: A24070 **KO** **Validated** **Recombinant**

Basic Information

Observed MW

81kDa

Calculated MW

81kDa

Category

Primary antibody

Applications

ELISA, WB, IHC-P

Cross-Reactivity

Human, Mouse, Rat

CloneNo number

ARC64786

Background

Enables RNA polymerase II C-terminal domain phosphoserine binding activity; S-adenosyl-L-methionine binding activity; and mRNA (2'-O-methyladenosine-N6-)-methyltransferase activity. Involved in mRNA methylation; negative regulation of translation; and positive regulation of translation. Located in intercellular bridge; microtubule cytoskeleton; and nucleoplasm.

Recommended Dilutions

WB 1:500 - 1:1000

IHC-P 1:50 - 1:200

Immunogen Information

Gene ID

63935

Swiss Prot

Q9H4Z3

Immunogen

Recombinant fusion protein containing a sequence corresponding to amino acids 1-200 of human PCIF1(NP_071387.1).

Synonyms

CAPAM; hCAPAM; hPCIF1; C20orf67; PPP1R121; F1

Contact

☎ | 400-999-6126

✉ | cn.market@abclonal.com.cn

🌐 | www.abclonal.com.cn

Product Information

Source

Rabbit

Isotype

IgG

Purification

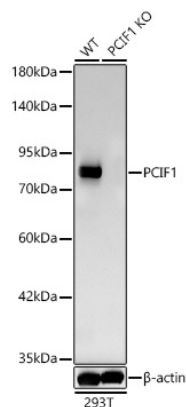
Affinity purification

Storage

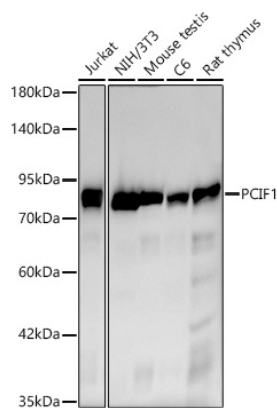
Store at -20°C. Avoid freeze / thaw cycles.

Buffer: PBS with 0.05% proclin300, 0.05% BSA, 50% glycerol, pH7.3.

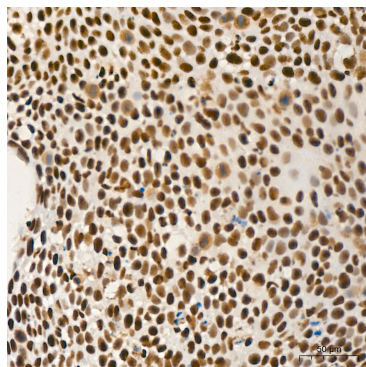
Validation Data



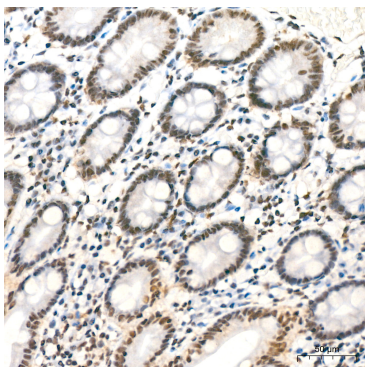
Western blot analysis of lysates from wild type (WT) and PCIF1 knockout (KO) 293T cells (RM01804) using [KO Validated] PCIF1 Rabbit mAb (A24070) at 1:1000 dilution.
Secondary antibody: HRP Goat Anti-Rabbit IgG (H+L) (AS014) at 1:10000 dilution.
Lysates/proteins: 25 µg per lane.
Blocking buffer: 3% nonfat dry milk in TBST.
Detection: ECL Basic Kit (RM00020).
Exposure time: 45s.



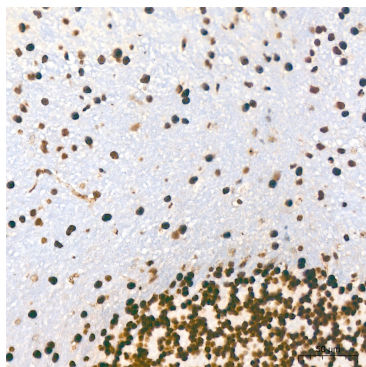
Western blot analysis of various lysates using [KO Validated] PCIF1 Rabbit mAb (A24070) at 1:1000 dilution.
Secondary antibody:HRP Goat Anti-Rabbit IgG (H+L)(AS014) at 1:10000 dilution.
Lysates / proteins: 25 µg per lane.
Blocking buffer: 3 % nonfat dry milk in TBST.
Detection:ECL Basic Kit (RM00020).
Exposuretime: 45s.



Immunohistochemistry analysis of PCIF1 in paraffin-embedded human cervix cancer tissue using [KO Validated] PCIF1 Rabbit mAb (A24070) at a dilution of 1:200 (40x lens).High pressure antigen retrieval was performed with 0.01 M citrate buffer (pH 6.0) prior to IHC staining.

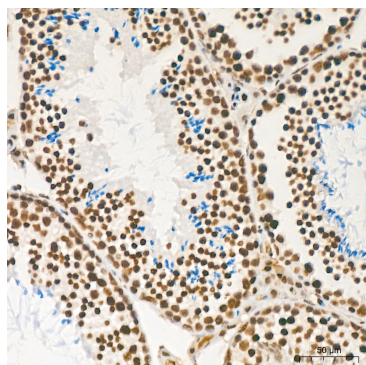


Immunohistochemistry analysis of PCIF1 in paraffin-embedded human colon tissue using [KO Validated] PCIF1 Rabbit mAb (A24070) at a dilution of 1:200 (40x lens).High pressure antigen retrieval was performed with 0.01 M citrate buffer (pH 6.0) prior to IHC staining.

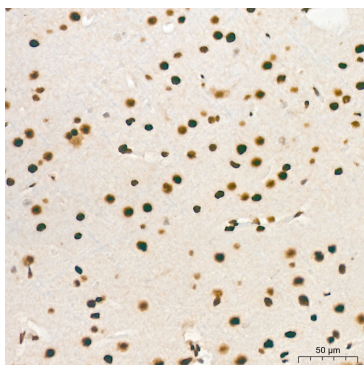


Immunohistochemistry analysis of PCIF1 in paraffin-embedded mouse brain tissue using [KO Validated] PCIF1 Rabbit mAb (A24070) at a dilution of 1:200 (40x lens).High pressure antigen retrieval was performed with 0.01 M citrate buffer (pH 6.0) prior to IHC staining.

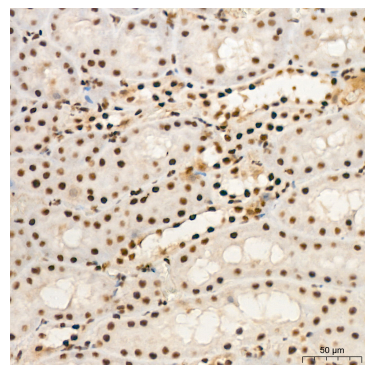
Validation Data



Immunohistochemistry analysis of PCIF1 in paraffin-embedded mouse testis tissue using [KO Validated] PCIF1 Rabbit mAb (A24070) at a dilution of 1:200 (40x lens). High pressure antigen retrieval was performed with 0.01 M citrate buffer (pH 6.0) prior to IHC staining.



Immunohistochemistry analysis of PCIF1 in paraffin-embedded rat brain tissue using [KO Validated] PCIF1 Rabbit mAb (A24070) at a dilution of 1:200 (40x lens). High pressure antigen retrieval was performed with 0.01 M citrate buffer (pH 6.0) prior to IHC staining.



Immunohistochemistry analysis of PCIF1 in paraffin-embedded rat kidney tissue using [KO Validated] PCIF1 Rabbit mAb (A24070) at a dilution of 1:200 (40x lens). High pressure antigen retrieval was performed with 0.01 M citrate buffer (pH 6.0) prior to IHC staining.