

ABflo® 594 Rabbit anti-Human/Mouse PDGFR α /CD140a mAb

Catalog No.: A24332

Basic Information

Observed MW

Refer to figures

Calculated MW

24kDa/82kDa/122kDa

Category

Primary antibody

Applications

FC

Cross-Reactivity

Human, Mouse

CloneNo number

ARC56217-ABflo594

Conjugate

ABflo® 594. Ex:588nm. Em:604nm.

Recommended Dilutions

FC 5 μ l per 10⁶ cells in
100 μ l volume

Background

This gene encodes a cell surface tyrosine kinase receptor for members of the platelet-derived growth factor family. These growth factors are mitogens for cells of mesenchymal origin. The identity of the growth factor bound to a receptor monomer determines whether the functional receptor is a homodimer or a heterodimer, composed of both platelet-derived growth factor receptor alpha and beta polypeptides. Studies suggest that this gene plays a role in organ development, wound healing, and tumor progression. Mutations in this gene have been associated with idiopathic hypereosinophilic syndrome, somatic and familial gastrointestinal stromal tumors, and a variety of other cancers.

Immunogen Information

Gene ID

5156

Swiss Prot

P16234

Immunogen

Recombinant fusion protein containing a sequence corresponding to amino acids 24-524 of human PDGFR α (NP_006197.1).

Synonyms

PDGFRA; CD140A; PDGFR-2; PDGFR2; GAS9; RHEPDGFRA; platelet-derived growth factor receptor alpha

Contact

☎ | 400-999-6126

✉ | cn.market@abclonal.com.cn

🌐 | www.abclonal.com.cn

Product Information

Source

Rabbit

Isotype

IgG

Purification

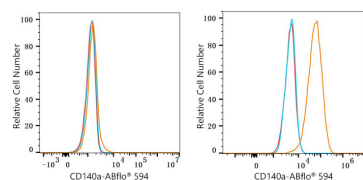
Affinity purification

Storage

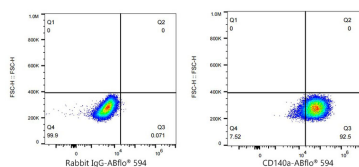
Store at 2-8°C. Avoid freeze.

Buffer: PBS with 0.03% proclin300, 0.2% BSA, pH7.3.

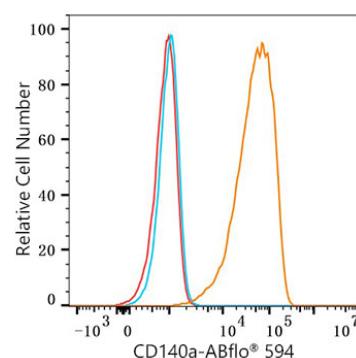
Validation Data



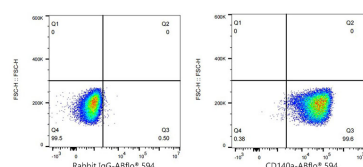
Flow cytometry: 1×10^6 HeLa cells (negative control, left) and U-138MG cells (right) were surface-stained with ABflo® 594 Rabbit anti-Human/Mouse PDGFR α /CD140a mAb (A24332, 5 μ l/Test, orange line) or ABflo® 594 Rabbit IgG isotype control (A23821, 5 μ l/Test, blue line). Non-fluorescently stained cells were used as blank control (red line).



Flow cytometry: 1×10^6 U-138MG cells were surface-stained with ABflo® 594 Rabbit IgG isotype control (A23821, 5 μ l/Test, left) or ABflo® 594 Rabbit anti-Human/Mouse PDGFR α /CD140a mAb (A24332, 5 μ l/Test, right).



Flow cytometry: 1×10^6 NIH/3T3 cells were surface-stained with ABflo® 594 Rabbit anti-Human/Mouse PDGFR α /CD140a mAb (A24332, 5 μ l/Test, orange line) or ABflo® 594 Rabbit IgG isotype control (A23821, 5 μ l/Test, blue line). Non-fluorescently stained NIH/3T3 cells were used as blank control (red line).



Flow cytometry: 1×10^6 NIH/3T3 cells were surface-stained with ABflo® 594 Rabbit IgG isotype control (A23821, 5 μ l/Test, left) or ABflo® 594 Rabbit anti-Human/Mouse PDGFR α /CD140a mAb (ARC56217-02-ABf594, 5 μ l/Test, right).