

# ABflo® 594 Rabbit anti-Mouse CD262/TRAILR2 mAb

Catalog No.: A24376

## Basic Information

### Observed MW

### Calculated MW

42kDa

### Category

Primary antibody

### Applications

FC

### Cross-Reactivity

Mouse

### CloneNo number

ARC62153

### Conjugate

ABflo® 594. Ex:588nm. Em:604nm.

## Background

Predicted to enable TRAIL receptor activity; identical protein binding activity; and protease binding activity. Predicted to be involved in TRAIL-activated apoptotic signaling pathway and positive regulation of apoptotic process. Predicted to act upstream of or within apoptotic process and regulation of apoptotic process. Predicted to be located in Golgi apparatus; cytosol; and membrane raft. Predicted to be active in cell surface and plasma membrane. Is expressed in bladder; liver; renal vasculature; urethra of female; and urethra of male. Human ortholog(s) of this gene implicated in carcinoma (multiple); cervical cancer; hematologic cancer (multiple); and urinary bladder cancer. Orthologous to several human genes including TNFRSF10A (TNF receptor superfamily member 10a).

## Recommended Dilutions

FC 5 µl per 10<sup>6</sup> cells in  
100 µl volume

## Immunogen Information

### Gene ID

21933

### Swiss Prot

Q9QZM4

### Immunogen

Recombinant protein (or fragment). This information is considered to be commercially sensitive.

### Synonyms

MK; DR5; Ly98; KILLER; TRICKB; TRAILR2; TRICK2A; TRICK2B

## Contact

☎ | 400-999-6126

✉ | [cn.market@abclonal.com.cn](mailto:cn.market@abclonal.com.cn)

🌐 | [www.abclonal.com.cn](http://www.abclonal.com.cn)

## Product Information

### Source

Rabbit

### Isotype

IgG

### Purification

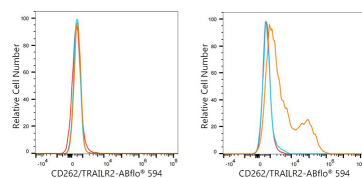
Affinity purification

### Storage

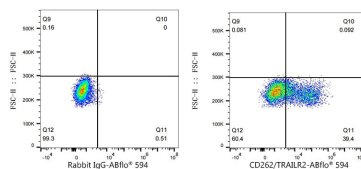
Store at 2-8°C. Avoid freeze.

Buffer: PBS containing 0.2% BSA, preserved with proclin300 or sodium azide (as specified on the Certificate of Analysis), pH 7.3.

## Validation Data



Flow cytometry:  $1 \times 10^6$  293F cells (negative control, left) and 293F (Transfection, right) cells were surface-stained with ABflo® 594 Rabbit anti-Mouse CD262/TRAILR2 mAb (A24376, 5  $\mu$ l/Test, orange line) or ABflo® 594 Rabbit IgG isotype control (A23821, 5  $\mu$ l/Test, blue line). Non-fluorescently stained cells were used as blank control (red line).



Flow cytometry:  $1 \times 10^6$  293F (Transfection) cells were surface-stained with ABflo® 594 Rabbit IgG isotype control (A23821, 5  $\mu$ l/Test, left) or ABflo® 594 Rabbit anti-Mouse CD262/TRAILR2 mAb (A24376, 5  $\mu$ l/Test, right).