

S-Tag Rabbit pAb

Catalog No.: A24465

Basic Information

Observed MW

30kDa

Calculated MW

Category

Primary antibody

Applications

ELISA, WB

Cross-Reactivity

Human

Background

S tag is an epitope tag composed of a 15 residue peptide, KETAAKFERQHMS, derived from the pancreatic ribonuclease A.

Recommended Dilutions

WB 1:1000 - 1:5000

Immunogen Information

Gene ID

Swiss Prot

Immunogen

A synthesized peptide derived from S-Tag.

Synonyms

S-Tag; S

Contact

☎ | 400-999-6126

✉ | cn.market@abclonal.com.cn

🌐 | www.abclonal.com.cn

Product Information

Source

Rabbit

Isotype

IgG

Purification

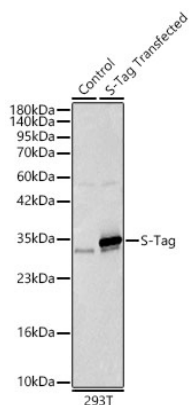
Affinity purification

Storage

Store at -20°C. Avoid freeze / thaw cycles.

Buffer: PBS with 0.05% proclin300, 50% glycerol, pH7.3.

Validation Data



Western blot analysis of lysates from wild type (WT) and 293T transfected with S-Tag using S-Tag Rabbit pAb (A24465) at 1:2000 dilution.

Secondary antibody: HRP Goat Anti-Rabbit IgG (H+L) (AS014) at 1:10000 dilution.

Lysates/proteins: 25ug per lane.

Blocking buffer: 3% nonfat dry milk in TBST.

Detection: ECL Basic Kit (RM00020).

Exposure time: 1s.