

KLF1 Rabbit pAb

Catalog No.: A24503

Basic Information

Observed MW

38kDa

Calculated MW

38kDa

Category

Primary antibody

Applications

ELISA, WB

Cross-Reactivity

Mouse, Rat

Background

This gene encodes a hematopoietic-specific transcription factor that induces high-level expression of adult beta-globin and other erythroid genes. The zinc-finger protein binds to the DNA sequence CCACACCCT found in the beta hemoglobin promoter. Heterozygous loss-of-function mutations in this gene result in the dominant In(Lu) blood phenotype.

Recommended Dilutions

WB 1:1000 - 1:5000

Immunogen Information

Gene ID

10661

Swiss Prot

Q13351

Immunogen

A synthetic peptide corresponding to a sequence within amino acids 211-311 of human KLF1 (NP_006554.1).

Synonyms

KLF1; EKLF; CDAN4; HBFQTL6; INLU; Kruppel like factor 1

Contact

 | 400-999-6126

 | cn.market@abclonal.com.cn

 | www.abclonal.com.cn

Product Information

Source

Rabbit

Isotype

IgG

Purification

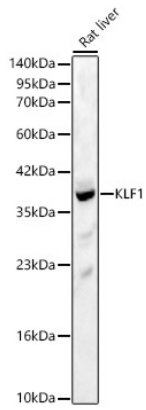
Affinity purification

Storage

Store at -20°C. Avoid freeze / thaw cycles.

Buffer: PBS with 0.05% proclin300, 50% glycerol, pH7.3.

Validation Data



Western blot analysis of Rat liver, using KLF1 Rabbit pAb (A24503) at 1:1000 dilution.
Secondary antibody: HRP Goat Anti-Rabbit IgG (H+L) (AS014) at 1:10000 dilution.
Lysates/proteins: 25ug per lane.
Blocking buffer: 3% nonfat dry milk in TBST.
Detection: ECL Basic Kit (RM00020).
Exposure time: 45s.