

# ABflo® 488 Rabbit anti-Mouse CD272/BTLA mAb

Catalog No.: A24680

## Basic Information

### Observed MW

### Calculated MW

34kDa

### Category

Primary antibody

### Applications

FC

### Cross-Reactivity

Mouse

### CloneNo number

ARC63351-ABflo488

### Conjugate

ABflo® 488. Ex:491nm. Em:516nm.

## Background

Enables signaling receptor activity. Acts upstream of or within immune response-regulating cell surface receptor signaling pathway; negative regulation of B cell proliferation; and negative regulation of alpha-beta T cell proliferation. Located in external side of plasma membrane. Is integral component of plasma membrane. Orthologous to human BTLA (B and T lymphocyte associated).

## Recommended Dilutions

**FC** 5 µl per 10<sup>6</sup> cells in  
100 µl volume

## Immunogen Information

### Gene ID

208154

### Swiss Prot

Q7TSA3

### Immunogen

Recombinant fusion protein containing a sequence corresponding to amino acids 30-176 of mouse CD272/BTLA (NP\_001032808.2).

### Synonyms

A630002H24

## Contact

 | 400-999-6126

 | [cn.market@abclonal.com.cn](mailto:cn.market@abclonal.com.cn)

 | [www.abclonal.com.cn](http://www.abclonal.com.cn)

## Product Information

### Source

Rabbit

### Isotype

IgG

### Purification

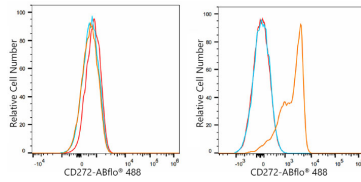
Affinity purification

### Storage

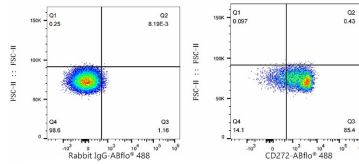
Store at 2-8°C. Avoid freeze.

Buffer: PBS with 0.03% proclin300,0.2% BSA,pH7.3.

## Validation Data



Flow cytometry:  $1 \times 10^6$  C2C12 cells (negative control, left) and C57/BL6 splenocytes (right) were surface-stained with ABflo® 488 Rabbit anti-Mouse CD272/BTLA mAb (A24680, 5  $\mu$ l/Test, orange line) or ABflo® 488 Rabbit IgG isotype control (A22069, 5  $\mu$ l/Test, blue line). Non-fluorescently stained cells were used as blank control (red line).



Flow cytometry:  $1 \times 10^6$  C57/BL6 splenocytes were surface-stained with ABflo® 488 Rabbit IgG isotype control (A22069, 5  $\mu$ l/Test, left) or ABflo® 488 Rabbit anti-Mouse CD272/BTLA mAb (A24680, 5  $\mu$ l/Test, right).