

ABflo® 594 Rabbit anti-Mouse CD4 mAb

Catalog No.: A24722

Basic Information

Observed MW

Calculated MW

51kDa

Category

Primary antibody

Applications

FC

Cross-Reactivity

Mouse

CloneNo number

ARC64069-ABflo594

Conjugate

ABflo® 594. Ex:588nm. Em:604nm.

Background

Predicted to enable several functions, including interleukin-16 binding activity; interleukin-16 receptor activity; and protein homodimerization activity. Involved in helper T cell enhancement of adaptive immune response. Acts upstream of or within several processes, including defense response to Gram-negative bacterium; positive regulation of calcium-mediated signaling; and positive regulation of peptidyl-tyrosine phosphorylation. Located in endoplasmic reticulum; external side of plasma membrane; and membrane raft. Is expressed in several structures, including alimentary system; brain; genitourinary system; hemolymphoid system; and liver and biliary system. Used to study type 1 diabetes mellitus. Human ortholog(s) of this gene implicated in immunodeficiency 79. Orthologous to human CD4 (CD4 molecule).

Recommended Dilutions

FC 5 µl per 10⁶ cells in
100 µl volume

Immunogen Information

Gene ID

12504

Swiss Prot

P06332

Immunogen

Recombinant fusion protein containing a sequence corresponding to amino acids 27-394 of mouse CD4 (NP_038516.1).

Synonyms

L3T4; Ly-4

Contact

☎ | 400-999-6126

✉ | cn.market@abclonal.com.cn

🌐 | www.abclonal.com.cn

Product Information

Source

Rabbit

Isotype

IgG

Purification

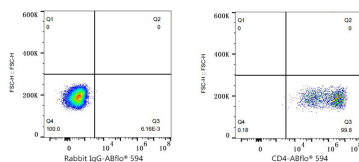
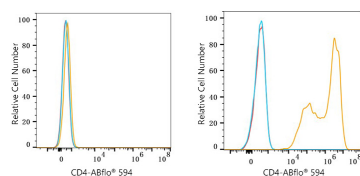
Affinity purification

Storage

Store at 2-8°C. Avoid freeze.

Buffer: PBS with 0.03% proclin300,0.2% BSA,pH7.3.

Validation Data



Flow cytometry: 1×10^6 293T cells (negative control, left) and 293T (Transfection, right) cells were surface-stained with ABflo® 594 Rabbit anti-Mouse CD4 mAb (ARC64069-01-ABf594, 2 $\mu\text{g}/\text{mL}$, orange line) or ABflo® 594 Rabbit IgG isotype control (A23821, 2 $\mu\text{g}/\text{mL}$, blue line). Non-fluorescently stained cells were used as blank control (red line).

Flow cytometry: 1×10^6 293T (Transfection) cells were surface-stained with ABflo® 594 Rabbit IgG isotype control (A23821, 2 $\mu\text{g}/\text{mL}$, left) or ABflo® 594 Rabbit anti-HMouse CD4 mAb (ARC64069-01-ABf594, 2 $\mu\text{g}/\text{mL}$, right).