

# LAMP1/CD107a Rabbit PolymAb®

**Catalog No.: A24804**

## Basic Information

### Observed MW

90-120kDa/

### Calculated MW

43kDa

### Category

Primary antibody

### Applications

ELISA, WB, IHC-P, IF/ICC

### Cross-Reactivity

Human, Mouse

### CloneNo number

ARC61633\_ARC52154

## Background

Enables protein domain specific binding activity. Involved in protein stabilization. Located in several cellular components, including cytoplasmic vesicle; sarcolemma; and vacuole. Is expressed in several structures, including 1-cell stage embryo; central nervous system; craniocervical region bone; extraembryonic component; and gut. Orthologous to human LAMP1 (lysosomal associated membrane protein 1).

## Recommended Dilutions

<b>WB</b>	1:1000 - 1:5000
<b>IHC-P</b>	1:50 - 1:200
<b>IF/ICC</b>	1:50 - 1:200

## Immunogen Information

### Gene ID

16783/ 3916

### Swiss Prot

P11438/P11279

### Immunogen

Recombinant protein of human/mouse CD107a.

### Synonyms

P2B; Perk; LGP-A; CD107a; Lamp-1; LGP-120

## Contact

☎	400-999-6126
✉	cn.market@abclonal.com.cn
🌐	www.abclonal.com.cn

## Product Information

### Source

Rabbit

### Isotype

IgG

### Purification

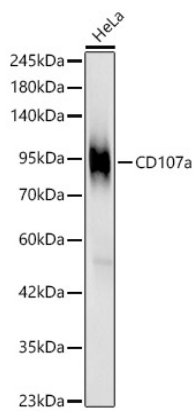
Affinity purification

### Storage

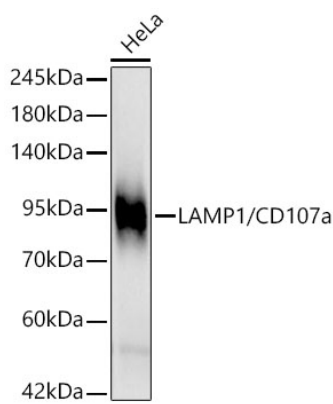
Store at -20°C. Avoid freeze / thaw cycles.

Buffer: PBS with 0.05% proclin300, 0.05% BSA, 50% glycerol, pH7.3.

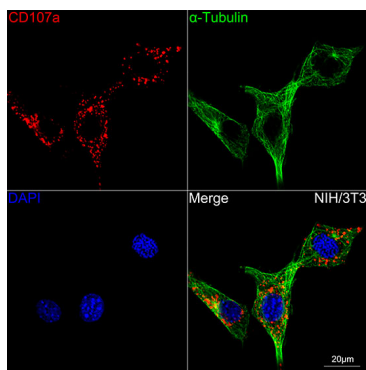
Validation Data



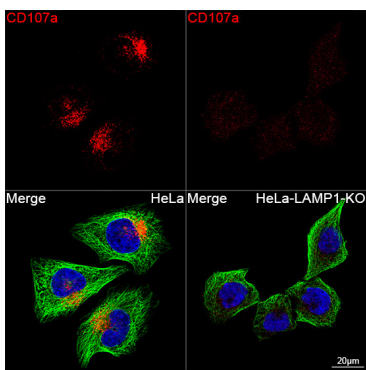
Western blot analysis of lysates from HeLa cells, using CD107a Rabbit PolymAb® (A24804) at 1:5000 dilution.  
Secondary antibody: HRP Goat Anti-Rabbit IgG (H+L) (AS014) at 1:10000 dilution.  
Lysates/proteins: 25ug per lane.  
Blocking buffer: 3% nonfat dry milk in TBST.  
Detection: ECL Basic Kit (RM00020).  
Exposure time: 45s.



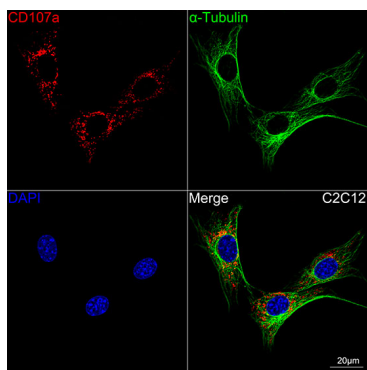
Western blot analysis of lysates from HeLa cells using LAMP1/CD107a Rabbit PolymAb® (A24804) at 1:5000 dilution incubated overnight at 4°C.  
Secondary antibody: HRP-conjugated Goat anti-Rabbit IgG (H+L) (AS014) at 1:10000 dilution.  
Lysates/proteins: 25 µg per lane.  
Blocking buffer: 3% nonfat dry milk in TBST.  
Detection: ECL Basic Kit (RM00020).  
Exposure time: 45s.



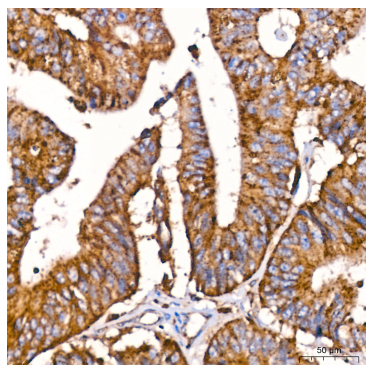
Confocal imaging of NIH/3T3 cells using CD107a Rabbit PolymAb® (A24804,dilution 1:200) followed by a further incubation with Cy3 Goat Anti-Rabbit IgG (H+L) (AS007, dilution 1:500) (Red). The cells were counterstained with α-Tubulin mAb (AC012, dilution 1:400) followed by incubation with ABflo® 488-conjugated Goat Anti-Mouse IgG (H+L) Ab (AS076, dilution 1:500) (Green). DAPI was used for nuclear staining (blue). Objective: 100x.



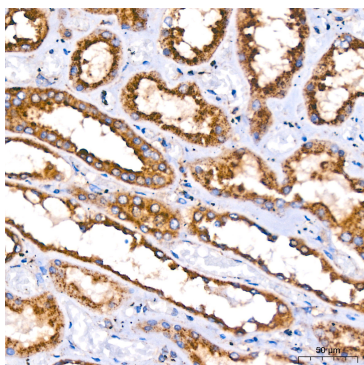
Confocal imaging of HeLa-LAMP1-2E4 and HeLa cells using CD107a Rabbit PolymAb® (A24804,dilution 1:200) followed by a further incubation with Cy3 Goat Anti-Rabbit IgG (H+L) (AS007, dilution 1:500) (Red). The cells were counterstained with α-Tubulin mAb (AC012, dilution 1:400) followed by incubation with ABflo® 488-conjugated Goat Anti-Mouse IgG (H+L) Ab (AS076, dilution 1:500) (Green). DAPI was used for nuclear staining (blue). Objective: 100x.



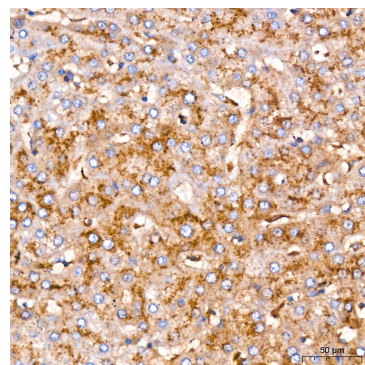
Confocal imaging of C2C12 cells using CD107a Rabbit PolymAb® (A24804,dilution 1:200) followed by a further incubation with Cy3 Goat Anti-Rabbit IgG (H+L) (AS007, dilution 1:500) (Red). The cells were counterstained with α-Tubulin mAb (AC012, dilution 1:400) followed by incubation with ABflo® 488-conjugated Goat Anti-Mouse IgG (H+L) Ab (AS076, dilution 1:500) (Green). DAPI was used for nuclear staining (blue). Objective: 100x.



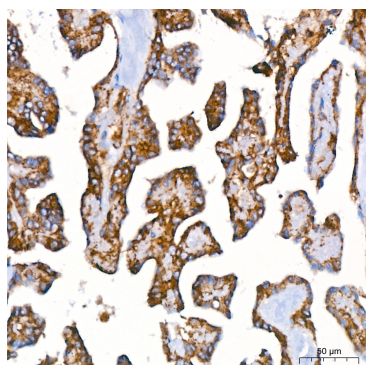
Immunohistochemistry analysis of CD107a in paraffin-embedded human colon carcinoma tissue using CD107a Rabbit PolymAb® (A24804) at dilution of 1:200 (40x lens). Perform high pressure antigen retrieval with 10 mM citrate buffer pH 6.0 before commencing with IHC staining protocol.



Immunohistochemistry analysis of CD107a in paraffin-embedded human kidney tissue using CD107a Rabbit PolymAb® (A24804) at dilution of 1:200 (40x lens). Perform high pressure antigen retrieval with 10 mM citrate buffer pH 6.0 before commencing with IHC staining protocol.



Immunohistochemistry analysis of CD107a in paraffin-embedded human liver tissue using CD107a Rabbit PolymAb® (A24804) at dilution of 1:200 (40x lens). Perform high pressure antigen retrieval with 10 mM citrate buffer pH 6.0 before commencing with IHC staining protocol.



Immunohistochemistry analysis of CD107a in paraffin-embedded human thyroid cancer tissue using CD107a Rabbit PolymAb® (A24804) at dilution of 1:200 (40x lens). Perform high pressure antigen retrieval with 10 mM citrate buffer pH 6.0 before commencing with IHC staining protocol.