

PP2A-A β /PR65 β /PPP2R1B Rabbit pAb

Catalog No.: A24836

Basic Information

Observed MW

66kDa

Calculated MW

52kDa/61kDa/66kDa/73kDa

Category

Primary antibody

Applications

WB, ELISA

Cross-Reactivity

Rat

Background

This gene encodes a constant regulatory subunit of protein phosphatase 2. Protein phosphatase 2 is one of the four major Ser/Thr phosphatases, and it is implicated in the negative control of cell growth and division. It consists of a common heteromeric core enzyme, which is composed of a catalytic subunit and a constant regulatory subunit, that associates with a variety of regulatory subunits. The constant regulatory subunit A serves as a scaffolding molecule to coordinate the assembly of the catalytic subunit and a variable regulatory B subunit. This gene encodes a beta isoform of the constant regulatory subunit A. Mutations in this gene have been associated with some lung and colon cancers. Alternatively spliced transcript variants have been described.

Recommended Dilutions

WB 1:500 - 1:1000

ELISA Recommended starting concentration is 1 μ g/mL. Please optimize the concentration based on your specific assay requirements.

Immunogen Information

Gene ID

5519

Swiss Prot

P30154

Immunogen

Synthetic peptide. This information is considered to be commercially sensitive.

Synonyms

PPP2R1B; PP2A-A β ; PR65 β ; protein phosphatase 2 scaffold subunit A β ; PP2A-A β /PR65 β /PPP2R1B

Contact

☎ | 400-999-6126

✉ | cn.market@abclonal.com.cn

🌐 | www.abclonal.com.cn

Product Information

Source

Rabbit

Isotype

IgG

Purification

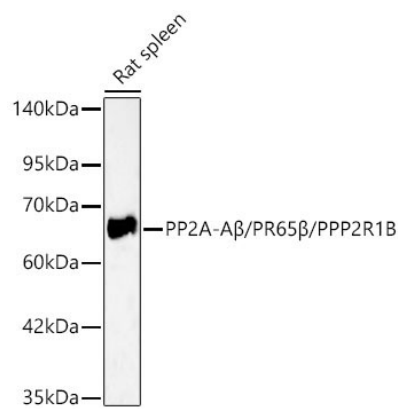
Affinity purification

Storage

Store at -20°C. Avoid freeze / thaw cycles.

Buffer: PBS containing 50% glycerol, preserved with proclin300 or sodium azide (as specified on the Certificate of Analysis), pH 7.3.

Validation Data



Western blot analysis of lysates from Rat spleen using PP2A-Aβ/PR65β/PPP2R1B Rabbit pAb (A24836) at 1:400 dilution.
Secondary antibody: HRP-conjugated Goat anti-Rabbit IgG (H+L) (AS014) at 1:10000 dilution.
Lysates/proteins: 25 µg per lane.
Blocking buffer: 3% nonfat dry milk in TBST.
Detection: ECL Basic Kit (RM00020).
Exposure time: 45s.