

[KD Validated]FGFR3 Rabbit pAb

Catalog No.: A24846

Basic Information

Observed MW

100-150kDa

Calculated MW

75kDa/85kDa/87kDa/88kDa

Category

Primary antibody

Applications

ELISA,WB,FC

Cross-Reactivity

Human

Background

This gene encodes a member of the fibroblast growth factor receptor (FGFR) family, with its amino acid sequence being highly conserved between members and among divergent species. FGFR family members differ from one another in their ligand affinities and tissue distribution. A full-length representative protein would consist of an extracellular region, composed of three immunoglobulin-like domains, a single hydrophobic membrane-spanning segment and a cytoplasmic tyrosine kinase domain. The extracellular portion of the protein interacts with fibroblast growth factors, setting in motion a cascade of downstream signals, ultimately influencing mitogenesis and differentiation. This particular family member binds acidic and basic fibroblast growth hormone and plays a role in bone development and maintenance. Mutations in this gene lead to craniosynostosis and multiple types of skeletal dysplasia. Three alternatively spliced transcript variants that encode different protein isoforms have been described.

Recommended Dilutions

WB 1:500 - 1:1000

Immunogen Information

Gene ID

2261

Swiss Prot

P22607

Immunogen

Recombinant fusion protein containing a sequence corresponding to amino acids 23-375 of human FGFR3(NP_000133.1).

Synonyms

FGFR3; ACH; CD333; CEK2; HSGFR3EX; JTK4; fibroblast growth factor receptor 3

Contact

☎ | 400-999-6126

✉ | cn.market@abclonal.com.cn

🌐 | www.abclonal.com.cn

Product Information

Source

Rabbit

Isotype

IgG

Purification

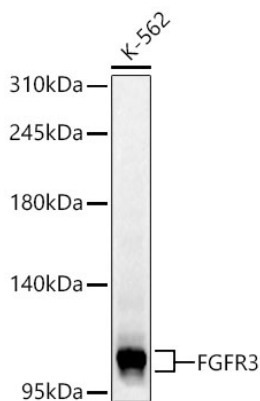
Affinity purification

Storage

Store at -20°C. Avoid freeze / thaw cycles.

Buffer: PBS with 0.05% proclin300,50% glycerol,pH7.3.

Validation Data



Western blot analysis of lysates from K-562 cells using [KD Validated] FGFR3 Rabbit pAb(A24846) at 1:400 dilution.

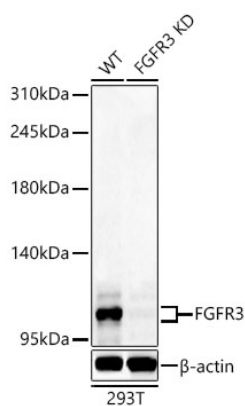
Secondary antibody: HRP Goat Anti-Rabbit IgG (H+L) (AS014) at 1:10000 dilution.

Lysates/proteins: 25 µg per lane.

Blocking buffer: 3% nonfat dry milk in TBST.

Detection: ECL Basic Kit (RM00020).

Exposure time: 90s.



Western blot analysis of lysates from wild type (WT) and FGFR3 knockdown (KD) 293T cells using [KD Validated] FGFR3 Rabbit pAb(A24846) at 1:400 dilution.

Secondary antibody: HRP Goat Anti-Rabbit IgG (H+L) (AS014) at 1:10000 dilution.

Lysates/proteins: 25 µg per lane.

Blocking buffer: 3% nonfat dry milk in TBST.

Detection: ECL Basic Kit (RM00020).

Exposure time: 90s.