

KDM7A Rabbit pAb

Catalog No.: A25048

Basic Information

Observed MW

Refer to figures

Calculated MW

106kDa

Category

Primary antibody

Applications

ELISA, IHC-P

Cross-Reactivity

Human, Mouse, Rat

Background

Enables histone demethylase activity; methylated histone binding activity; and transition metal ion binding activity. Involved in histone lysine demethylation. Located in nucleolus and nucleoplasm. Implicated in melanoma.

Recommended Dilutions

IHC-P 1:50 - 1:200

Immunogen Information

Gene ID

80853

Swiss Prot

Q6ZMT4

Immunogen

A synthetic peptide corresponding to a sequence within amino acids 840-941 of human KDM7A(NP_085150.1).

Synonyms

JHDM1D; KDM7A

Contact

☎ | 400-999-6126

✉ | cn.market@abclonal.com.cn

🌐 | www.abclonal.com.cn

Product Information

Source

Rabbit

Isotype

IgG

Purification

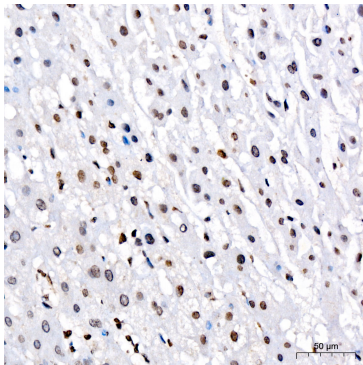
Affinity purification

Storage

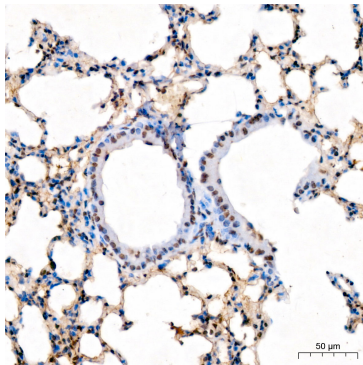
Store at -20°C. Avoid freeze / thaw cycles.

Buffer: PBS with 0.05% proclin300, 50% glycerol, pH7.3.

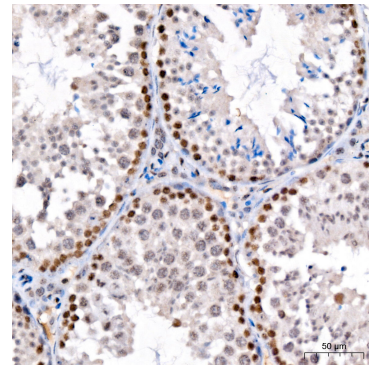
Validation Data



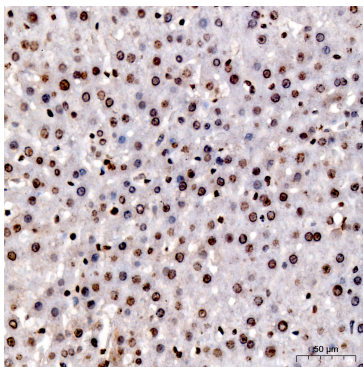
Immunohistochemistry analysis of KDM7A in paraffin-embedded human liver cancer tissue using KDM7A Rabbit pAb (A25048) at a dilution of 1:100 (40x lens). High pressure antigen retrieval was performed with 0.01 M citrate buffer (pH 6.0) prior to IHC staining.



Immunohistochemistry analysis of KDM7A in paraffin-embedded mouse lung tissue using KDM7A Rabbit pAb (A25048) at a dilution of 1:100 (40x lens). High pressure antigen retrieval was performed with 0.01 M citrate buffer (pH 6.0) prior to IHC staining.



Immunohistochemistry analysis of KDM7A in paraffin-embedded mouse testis tissue using KDM7A Rabbit pAb (A25048) at a dilution of 1:100 (40x lens). High pressure antigen retrieval was performed with 0.01 M citrate buffer (pH 6.0) prior to IHC staining.



Immunohistochemistry analysis of KDM7A in paraffin-embedded rat liver tissue using KDM7A Rabbit pAb (A25048) at a dilution of 1:100 (40x lens). High pressure antigen retrieval was performed with 0.01 M citrate buffer (pH 6.0) prior to IHC staining.