

Mki67 Rabbit pAb

Catalog No.: A25399

1 Publications

Basic Information

Observed MW

Refer to figures

Calculated MW

350kDa

Category

Primary antibody

Applications

ELISA, IHC-P, IF/ICC

Cross-Reactivity

Mouse, Rat

Background

Predicted to enable protein C-terminus binding activity. Involved in regulation of chromatin organization. Acts upstream of or within cholangiocyte proliferation; hepatocyte proliferation; and meiotic cell cycle. Located in chromosome; cytoplasm; and nucleolus. Is expressed in several structures, including alimentary system; brain; genitourinary system; sensory organ; and skin. Human ortholog(s) of this gene implicated in Crohn's disease; breast cancer; human immunodeficiency virus infectious disease; and pancreatic cancer. Orthologous to human MKI67 (marker of proliferation Ki-67).

Recommended Dilutions

IHC-P 1:500 - 1:1000

IF/ICC 1:50 - 1:200

Immunogen Information

Gene ID

17345

Swiss Prot

E9PVX6

Immunogen

Recombinant Protein corresponding to a sequence within amino acids 1816-2163 of mouse Mki67 (NP_001074586.2).

Synonyms

Ki67; Ki-67; D630048A14Rik

Contact

☎ | 400-999-6126

✉ | cn.market@abclonal.com.cn

🌐 | www.abclonal.com.cn

Product Information

Source

Rabbit

Isotype

IgG

Purification

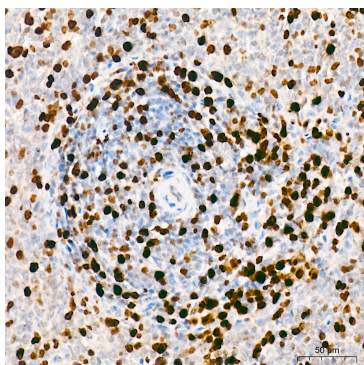
Affinity purification

Storage

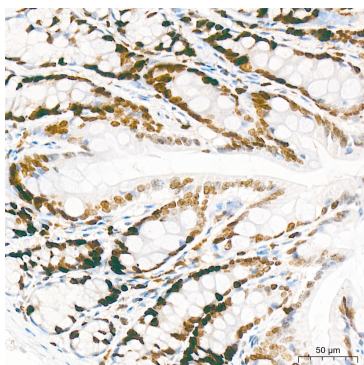
Store at -20°C. Avoid freeze / thaw cycles.

Buffer: PBS with 0.05% proclin300, 50% glycerol, pH7.3.

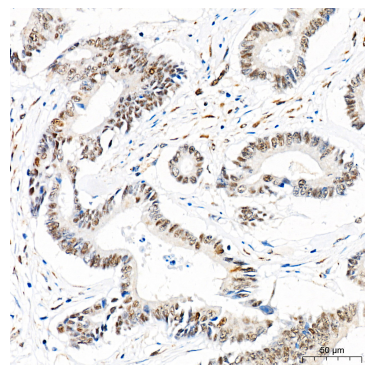
Validation Data



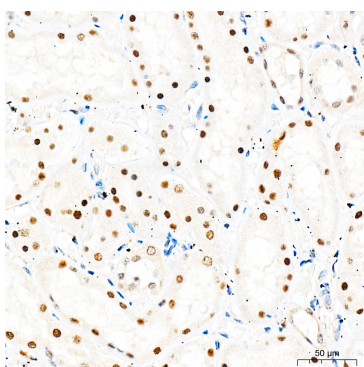
Immunohistochemistry analysis of Mouse Mki67 in paraffin-embedded rat spleen tissue using Mouse Mki67 Rabbit pAb (A25399) at a dilution of 1:1000 (40x lens). High pressure antigen retrieval was performed with 0.01 M citrate buffer (pH 6.0) prior to IHC staining.



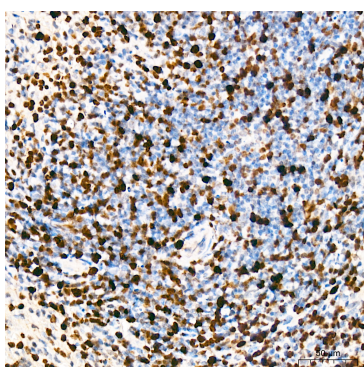
Immunohistochemistry analysis of Mouse Mki67 in paraffin-embedded rat colon tissue using Mouse Mki67 Rabbit pAb (A25399) at a dilution of 1:1000 (40x lens). High pressure antigen retrieval was performed with 0.01 M citrate buffer (pH 6.0) prior to IHC staining.



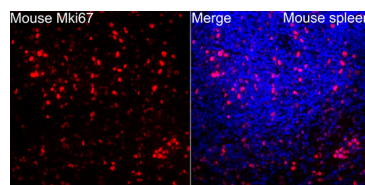
Immunohistochemistry analysis of Mouse Mki67 in paraffin-embedded human colon carcinoma tissue using Mouse Mki67 Rabbit pAb (A25399) at a dilution of 1:1000 (40x lens). High pressure antigen retrieval was performed with 0.01 M citrate buffer (pH 6.0) prior to IHC staining.



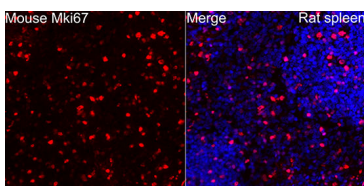
Immunohistochemistry analysis of Mouse Mki67 in paraffin-embedded human kidney tissue using Mouse Mki67 Rabbit pAb (A25399) at a dilution of 1:1000 (40x lens). High pressure antigen retrieval was performed with 0.01 M citrate buffer (pH 6.0) prior to IHC staining.



Immunohistochemistry analysis of Mouse Mki67 in paraffin-embedded mouse spleen tissue using Mouse Mki67 Rabbit pAb (A25399) at a dilution of 1:1000 (40x lens). High pressure antigen retrieval was performed with 0.01 M citrate buffer (pH 6.0) prior to IHC staining.



Immunofluorescence analysis of paraffin-embedded Mouse spleen tissue using Mouse Mki67 Rabbit pAb (A25399) at a dilution of 1:100 (40x lens). Secondary antibody: Cy3 Goat Anti-Rabbit IgG (H+L) (AS007) at 1:500 dilution. Blue: DAPI for nuclear staining. Perform high pressure antigen retrieval with 0.01 M citrate buffer (pH 6.0) prior to IF staining.



Immunofluorescence analysis of paraffin-embedded Rat spleen tissue using Mouse Mki67 Rabbit pAb (A25399) at a dilution of 1:100 (40x lens). Secondary antibody: Cy3 Goat Anti-Rabbit IgG (H+L) (AS007) at 1:500 dilution. Blue: DAPI for nuclear staining. Perform high pressure antigen retrieval with 0.01 M citrate buffer (pH 6.0) prior to IF

Validation Data

staining.