

# Estrogen Receptor beta Rabbit pAb

Catalog No.: A2546

8 Publications

## Basic Information

### Observed MW

60kDa

### Calculated MW

59kDa

### Category

Primary antibody

### Applications

ELISA, WB

### Cross-Reactivity

Human, Mouse, Rat

## Background

This gene encodes a member of the family of estrogen receptors and superfamily of nuclear receptor transcription factors. The gene product contains an N-terminal DNA binding domain and C-terminal ligand binding domain and is localized to the nucleus, cytoplasm, and mitochondria. Upon binding to 17 $\beta$ -estradiol or related ligands, the encoded protein forms homo- or hetero-dimers that interact with specific DNA sequences to activate transcription. Some isoforms dominantly inhibit the activity of other estrogen receptor family members. Several alternatively spliced transcript variants of this gene have been described, but the full-length nature of some of these variants has not been fully characterized.

## Recommended Dilutions

WB 1:500 - 1:1000

## Immunogen Information

### Gene ID

2100

### Swiss Prot

Q92731

### Immunogen

Recombinant fusion protein containing a sequence corresponding to amino acids 1-153 of human Estrogen Receptor beta (NP\_001428.1).

### Synonyms

Erb; ESRB; ODG8; ESTRB; NR3A2; ER-BETA; ESR-BETA; Estrogen Receptor beta

## Contact

☎ | 400-999-6126

✉ | [cn.market@abclonal.com.cn](mailto:cn.market@abclonal.com.cn)

🌐 | [www.abclonal.com.cn](http://www.abclonal.com.cn)

## Product Information

### Source

Rabbit

### Isotype

IgG

### Purification

Affinity purification

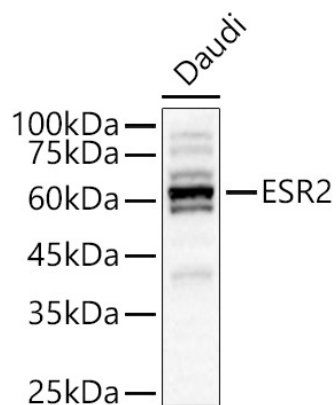
### Storage

Store at -20°C. Avoid freeze / thaw cycles.

Buffer: PBS with 0.05% proclin300, 50% glycerol, pH7.3.

## Validation Data

---



Western blot analysis of lysates from Daudi cells using Estrogen Receptor beta Rabbit pAb(A2546) at 1:600 dilution.

Secondary antibody: HRP Goat Anti-Rabbit IgG (H+L) (AS014) at 1:10000 dilution.

Lysates/proteins: 25 µg per lane.

Blocking buffer: 3% nonfat dry milk in TBST.

Detection: ECL Basic Kit (RM00020).

Exposure time: 10s.