

# ABflo® 594 Rabbit anti-Human IL23R mAb

Catalog No.: A25556

## Basic Information

### Observed MW

### Calculated MW

41kDa/43kDa/72kDa

### Category

Primary antibody

### Applications

FC

### Cross-Reactivity

Human

### CloneNo number

ARC66641-ABflo594

### Conjugate

ABflo® 594. Ex:588nm. Em:604nm.

## Background

The protein encoded by this gene is a subunit of the receptor for IL23A/IL23. This protein pairs with the receptor molecule IL12RB1/IL12Rbeta1, and both are required for IL23A signaling. This protein associates constitutively with Janus kinase 2 (JAK2), and also binds to transcription activator STAT3 in a ligand-dependent manner.

## Recommended Dilutions

FC 5 µl per 10<sup>6</sup> cells in  
100 µl volume

## Immunogen Information

### Gene ID

149233

### Swiss Prot

Q5VWK5

### Immunogen

Recombinant fusion protein containing a sequence corresponding to amino acids 124-353 of human IL23R (NP\_653302.2).

### Synonyms

PSORS7

## Contact

☎ | 400-999-6126

✉ | [cn.market@abclonal.com.cn](mailto:cn.market@abclonal.com.cn)

🌐 | [www.abclonal.com.cn](http://www.abclonal.com.cn)

## Product Information

### Source

Rabbit

### Isotype

IgG

### Purification

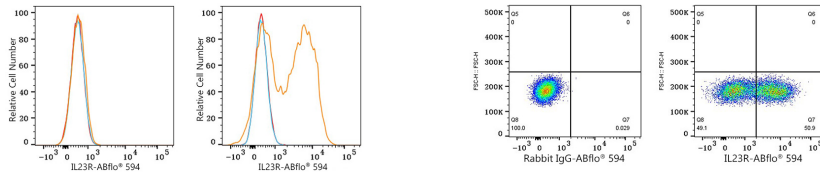
Affinity purification

### Storage

Store at 2-8°C. Avoid freeze.

Buffer: PBS with 0.03% proclin300,0.2% BSA,pH7.3.

## Validation Data



Flow cytometry: 1X10<sup>6</sup> 293F cells (negative control, left) and 293F (Transfection, right) cells were surface-stained with ABflo® 594 Rabbit anti-Human IL23R mAb (A25556, 5 µl/Test, orange line) or ABflo® 594 Rabbit IgG isotype control (A23821, 5 µl/Test, blue line). Non-fluorescently stained cells were used as blank control (red line).

Flow cytometry: 1X10<sup>6</sup> 293F (Transfection) cells were surface-stained with ABflo® 594 Rabbit IgG isotype control (A23821, 5 µl/Test, left) or ABflo® 594 Rabbit anti-Human IL23R mAb (A25556, 5 µl/Test, right).