

ABflo® 647 Rabbit anti-Mouse CD215/IL-15R α mAb

Catalog No.: A25574

Basic Information

Observed MW

Refer to figures

Calculated MW

28kDa

Category

Primary antibody

Applications

IF/ICC,FC

Cross-Reactivity

Mouse

CloneNo number

ARC66399-ABflo647

Conjugate

ABflo® 647. Ex:648nm. Em:664nm.

Recommended Dilutions

IF/ICC 1:50 - 1:200

FC 5 μ l per 10⁶ cells in
100 μ l volume

Background

Predicted to enable interleukin-15 receptor activity and protein kinase binding activity. Acts upstream of or within positive regulation of natural killer cell differentiation. Located in cytoplasmic vesicle and plasma membrane. Is expressed in central nervous system; retina; retina inner nuclear layer; and retina outer nuclear layer. Orthologous to human IL15RA (interleukin 15 receptor subunit alpha).

Immunogen Information

Gene ID

16169

Swiss Prot

Q60819

Immunogen

Recombinant fusion protein containing a sequence corresponding to amino acids 33-205 of mouse CD215/IL-15R α (NP_032384.1).


Synonyms

Il15ra

Contact

 | 400-999-6126

 | cn.market@abclonal.com.cn

 | www.abclonal.com.cn

Product Information

Source

Rabbit

Isotype

IgG

Purification

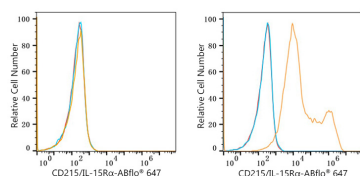
Affinity purification

Storage

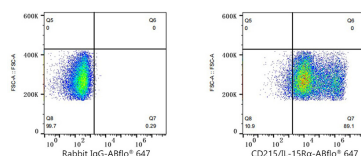
Store at 2-8°C. Avoid freeze.

Buffer: PBS with 0.03% proclin300,0.2% BSA,pH7.3.

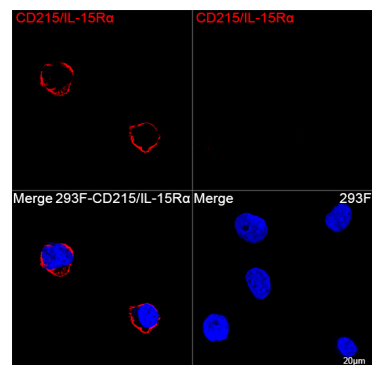
Validation Data



Flow cytometry: 1X10⁶ CHO cells (negative control, left) and CHO (Transfection, right) cells were surface-stained with ABflo® 647 Rabbit anti-Mouse CD215/IL-15Rα mAb (A25574, 5 μl/Test, orange line) or ABflo® 647 Rabbit IgG isotype control (A22070, 5 μl/Test, blue line). Non-fluorescently stained cells were used as blank control (red line).



Flow cytometry: 1X10⁶ CHO (Transfection) cells were surface-stained with ABflo® 647 Rabbit IgG isotype control (A22070, 5 μl/Test, left) or ABflo® 647 Rabbit anti-Mouse CD215/IL-15Rα mAb (A25574, 5 μl/Test, right).



Confocal imaging of 293F cells transfected with CD215/IL-15Rα using ABflo® 647 Rabbit anti-Mouse CD215/IL-15Rα mAb (A25574, dilution 1:50). DAPI was used for nuclear staining (Blue). Objective: 100x.