

# FOSL2/FRA2 Rabbit pAb

Catalog No.: A25606

## Basic Information

### Observed MW

Refer to figures

### Calculated MW

35kDa

### Category

Primary antibody

### Applications

ELISA, IHC-P

### Cross-Reactivity

Mouse, Rat

## Background

The Fos gene family consists of 4 members: FOS, FOSB, FOSL1, and FOSL2. These genes encode leucine zipper proteins that can dimerize with proteins of the JUN family, thereby forming the transcription factor complex AP-1. As such, the FOS proteins have been implicated as regulators of cell proliferation, differentiation, and transformation.

## Recommended Dilutions

IHC 1:100 - 1:500

## Immunogen Information

### Gene ID

2355

### Swiss Prot

P15408

### Immunogen

A synthetic peptide corresponding to a sequence within amino acids 201-300 of human FOSL2/FRA2 (NP\_005244.1).

### Synonyms

FRA2

## Contact

☎ | 400-999-6126

✉ | [cn.market@abclonal.com.cn](mailto:cn.market@abclonal.com.cn)

🌐 | [www.abclonal.com.cn](http://www.abclonal.com.cn)

## Product Information

### Source

Rabbit

### Isotype

IgG

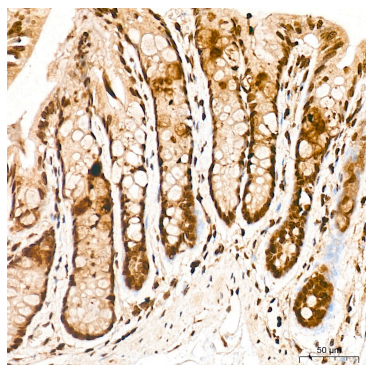
### Purification

Affinity purification

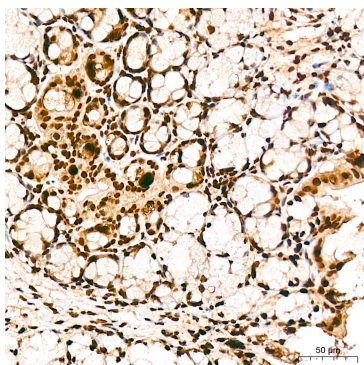
### Storage

Store at -20°C. Avoid freeze / thaw cycles.

Buffer: PBS with 0.05% proclin300, 50% glycerol, pH7.3.



Immunohistochemistry analysis of FOSL2/FRA2 in paraffin-embedded Rat colon tissue using FOSL2/FRA2 Rabbit pAb (A25606) at a dilution of 1:300 (40x lens). High pressure antigen retrieval was performed with 0.01 M citrate buffer (pH 6.0) prior to IHC staining.



Immunohistochemistry analysis of FOSL2/FRA2 in paraffin-embedded Mouse colon tissue using FOSL2/FRA2 Rabbit pAb (A25606) at a dilution of 1:300 (40x lens). High pressure antigen retrieval was performed with 0.01 M citrate buffer (pH 6.0) prior to IHC staining.