

CD5 Rabbit mAb

Catalog No.: A25910 **Recombinant**

Basic Information

Observed MW

Refer to figures

Calculated MW

55kDa

Category

Primary antibody

Applications

ELISA,FC

Cross-Reactivity

Human

CloneNo number

ARC53917

Background

This gene encodes a member of the scavenger receptor cysteine-rich (SRCR) superfamily. Members of this family are secreted or membrane-anchored proteins mainly found in cells associated with the immune system. This protein is a type-I transmembrane glycoprotein found on the surface of thymocytes, T lymphocytes and a subset of B lymphocytes. The encoded protein contains three SRCR domains and may act as a receptor to regulate T-cell proliferation. Alternative splicing results in multiple transcript variants encoding different isoforms.

Recommended Dilutions

FC 1:500 - 1:1000

Immunogen Information

Gene ID

921

Swiss Prot

P06127

Immunogen

Recombinant fusion protein containing a sequence corresponding to amino acids 25-371 of human CD5 (NP_055022.2).

Synonyms

T1; LEU1

Contact

☎ | 400-999-6126

✉ | cn.market@abclonal.com.cn

🌐 | www.abclonal.com.cn

Product Information

Source

Rabbit

Isotype

IgG

Purification

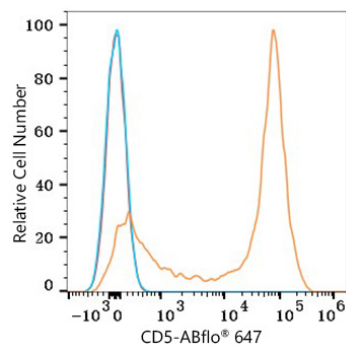
Affinity purification

Storage

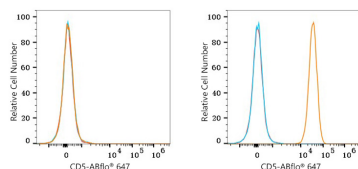
Store at -20°C. Avoid freeze / thaw cycles.

Buffer: PBS with 0.05% proclin300,0.05% BSA,50% glycerol,pH7.3.

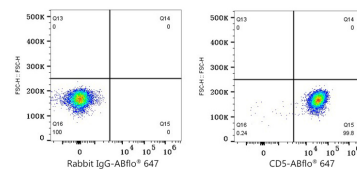
Validation Data



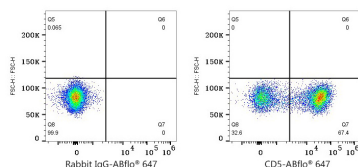
Flow cytometry: 1×10^6 Human PBMC were surface-stained with CD5 Rabbit mAb (A25910, 2 $\mu\text{g}/\text{mL}$, orange line) or Rabbit IgG isotype control (AC042, 2 $\mu\text{g}/\text{mL}$, blue line), followed by ABflo® 647 conjugated goat anti-rabbit pAb staining. Non-fluorescently stained cells were used as blank control (red line)



Flow cytometry: 1×10^6 K-562 cells (negative control, left) and MOLT-4 cells (right) were surface-stained with CD5 Rabbit mAb (A25910, 2 $\mu\text{g}/\text{mL}$, orange line) or Rabbit IgG isotype control (AC042, 2 $\mu\text{g}/\text{mL}$, blue line), followed by ABflo® 647 conjugated goat anti-rabbit pAb staining. Non-fluorescently stained cells were used as blank control (red line).



Flow cytometry: 1×10^6 MOLT-4 cells were surface-stained with Rabbit IgG isotype control (AC042, 2 $\mu\text{g}/\text{mL}$, left) or CD5 Rabbit mAb (A25910, 2 $\mu\text{g}/\text{mL}$, right), followed by ABflo® 647 conjugated goat anti-rabbit pAb staining.



Flow cytometry: 1×10^6 Human PBMC were surface-stained with Rabbit IgG isotype control (AC042, 2 $\mu\text{g}/\text{mL}$, left) or CD5 Rabbit mAb (A25910, 2 $\mu\text{g}/\text{mL}$, right), followed by ABflo® 647 conjugated goat anti-rabbit pAb staining.