

# Cytokeratin 15 (KRT15) Rabbit pAb

Catalog No.: A2660

2 Publications

## Basic Information

### Observed MW

47-50kDa

### Calculated MW

49kDa

### Category

Primary antibody

### Applications

ELISA, WB, IF/ICC

### Cross-Reactivity

Human

## Background

The protein encoded by this gene is a member of the keratin gene family. The keratins are intermediate filament proteins responsible for the structural integrity of epithelial cells and are subdivided into cytokeratins and hair keratins. Most of the type I cytokeratins consist of acidic proteins which are arranged in pairs of heterotypic keratin chains and are clustered in a region on chromosome 17q21.2.

## Recommended Dilutions

WB 1:500 - 1:2000

IF/ICC 1:50 - 1:200

## Immunogen Information

### Gene ID

3866

### Swiss Prot

P19012

### Immunogen

A synthetic peptide corresponding to a sequence within amino acids 100-200 of human Cytokeratin 15 (KRT15) (P19012).

### Synonyms

K15; CK15; K1CO; Cytokeratin 15 (KRT15)

## Contact

☎ | 400-999-6126

✉ | [cn.market@abclonal.com.cn](mailto:cn.market@abclonal.com.cn)

🌐 | [www.abclonal.com.cn](http://www.abclonal.com.cn)

## Product Information

### Source

Rabbit

### Isotype

IgG

### Purification

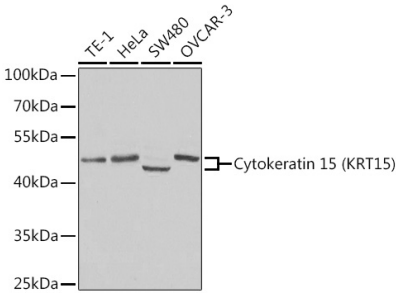
Affinity purification

### Storage

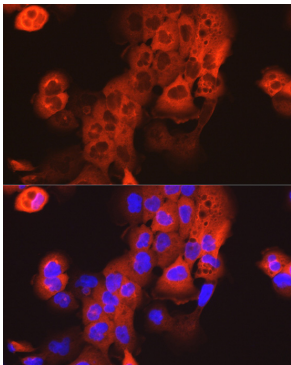
Store at -20°C. Avoid freeze / thaw cycles.

Buffer: PBS with 0.02% sodium azide, 50% glycerol, pH 7.3.

# Validation Data



Western blot analysis of extracts of various cell lines, using Cytokeratin 15 (Cytokeratin 15 (KRT15)) antibody (A2660) at 1:400 dilution.  
Secondary antibody: HRP Goat Anti-Rabbit IgG (H+L) (AS014) at 1:10000 dilution.  
Lysates/proteins: 25µg per lane.  
Blocking buffer: 3% nonfat dry milk in TBST.



Immunofluorescence analysis of A431 cells using Cytokeratin 15 (KRT15) Rabbit pAb (A2660) at dilution of 1:20 (40x lens). Blue: DAPI for nuclear staining.