

# EGF Rabbit pAb

**Catalog No.: A2720**

## Basic Information

**Observed MW**

160kDa

**Calculated MW**

134kDa

**Category**

Primary antibody

**Applications**

ELISA,DB,WB

**Cross-Reactivity**

Human, Mouse

## Background

This gene encodes a member of the epidermal growth factor superfamily. The encoded preproprotein is proteolytically processed to generate the 53-amino acid epidermal growth factor peptide. This protein acts a potent mitogenic factor that plays an important role in the growth, proliferation and differentiation of numerous cell types. This protein acts by binding with high affinity to the cell surface receptor, epidermal growth factor receptor. Defects in this gene are the cause of hypomagnesemia type 4. Dysregulation of this gene has been associated with the growth and progression of certain cancers. Alternative splicing results in multiple transcript variants, at least one of which encodes a preproprotein that is proteolytically processed.

## Recommended Dilutions

**DB** 1:500 - 1:2000**WB** 1:500 - 1:2000

## Immunogen Information

**Gene ID**

1950

**Swiss Prot**

P01133

**Immunogen**

Recombinant fusion protein containing a sequence corresponding to amino acids 971-1023 of human EGF (NP\_001954.2).

**Synonyms**

URG; HOMG4; EGF

## Contact

 | 400-999-6126 | [cn.market@abclonal.com.cn](mailto:cn.market@abclonal.com.cn) | [www.abclonal.com.cn](http://www.abclonal.com.cn)

## Product Information

**Source**

Rabbit

**Isotype**

IgG

**Purification**

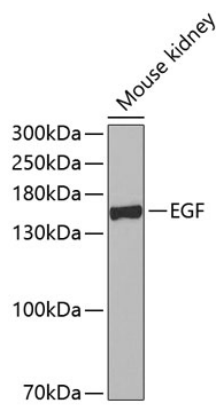
Affinity purification

**Storage**

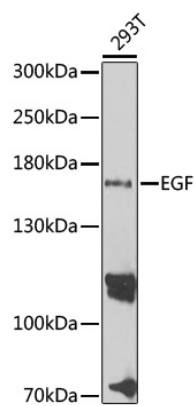
Store at -20°C. Avoid freeze / thaw cycles.

Buffer: PBS with 0.02% sodium azide, 50% glycerol, pH 7.3.

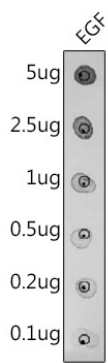
Validation Data



Western blot analysis of lysates from mouse kidney, using EGF Rabbit pAb (A2720) at 1:500 dilution.  
Secondary antibody: HRP Goat Anti-Rabbit IgG (H+L) (AS014) at 1:10000 dilution.  
Lysates/proteins: 25µg per lane.  
Blocking buffer: 3% nonfat dry milk in TBST.  
Detection: ECL Basic Kit (RM00020).  
Exposure time: 90s.



Western blot analysis of lysates from 293T cells, using EGF Rabbit pAb (A2720) at 1:1000 dilution.  
Secondary antibody: HRP Goat Anti-Rabbit IgG (H+L) (AS014) at 1:10000 dilution.  
Lysates/proteins: 25µg per lane.  
Blocking buffer: 3% nonfat dry milk in TBST.  
Detection: ECL Basic Kit (RM00020).  
Exposure time: 10s.



Dot-blot analysis of purified mature EGF using EGF antibody A2720 at 1:500 dilution