

# MonoMethyl-Histone H3-R8 Rabbit pAb

**Catalog No.: A3156**

## Basic Information

**Observed MW**

17kDa

**Calculated MW**

16kDa

**Category**

Primary antibody

**Applications**

ELISA, WB, IHC-P, IF/ICC

**Cross-Reactivity**

Human, Mouse, Rat, Other (Wide Range Predicted)

## Background

Histones are basic nuclear proteins that are responsible for the nucleosome structure of the chromosomal fiber in eukaryotes. Nucleosomes consist of approximately 146 bp of DNA wrapped around a histone octamer composed of pairs of each of the four core histones (H2A, H2B, H3, and H4). The chromatin fiber is further compacted through the interaction of a linker histone, H1, with the DNA between the nucleosomes to form higher order chromatin structures. This gene is intronless and encodes a replication-dependent histone that is a member of the histone H3 family. Transcripts from this gene lack polyA tails; instead, they contain a palindromic termination element. This gene is located separately from the other H3 genes that are in the histone gene cluster on chromosome 6p22-p21.3.

## Recommended Dilutions

<b>WB</b>	1:100 - 1:500
<b>IHC-P</b>	1:50 - 1:200
<b>IF/ICC</b>	1:50 - 1:200

## Immunogen Information

**Gene ID**

8290/8350

**Swiss Prot**

Q16695/P68431

**Immunogen**

A synthetic monomethylated peptide around R8 of human histone H3 (NP\_003520.1).

**Synonyms**

H3t; H3.4; H3/g; H3FT; H3C16; HIST3H3; MonoMethyl-Histone H3-R8

## Contact

	400-999-6126
	<a href="mailto:cn.market@abclonal.com.cn">cn.market@abclonal.com.cn</a>
	<a href="http://www.abclonal.com.cn">www.abclonal.com.cn</a>

## Product Information

**Source**

Rabbit

**Isotype**

IgG

**Purification**

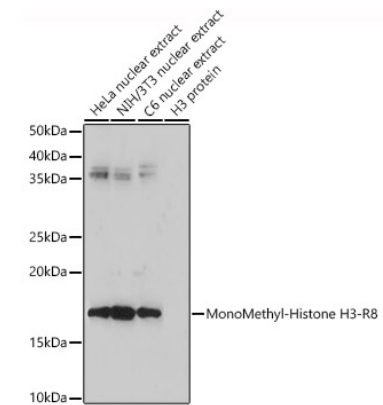
Affinity purification

**Storage**

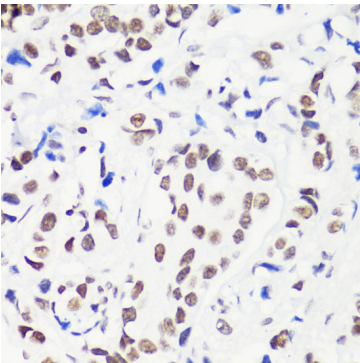
Store at -20°C. Avoid freeze / thaw cycles.

Buffer: PBS with 0.01% thimerosal, 50% glycerol, pH7.3.

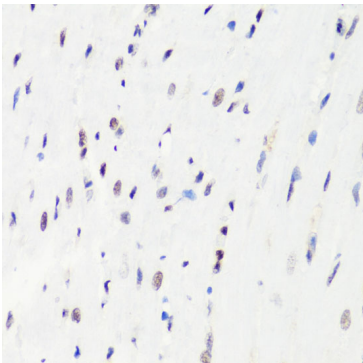
Validation Data



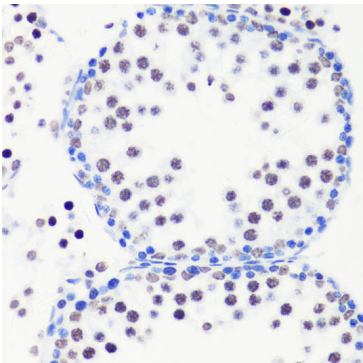
Western blot analysis of various lysates using MonoMethyl-Histone H3-R8 Rabbit pAb (A3156) at 1:500 dilution.  
Secondary antibody: HRP Goat Anti-Rabbit IgG (H+L) (AS014) at 1:10000 dilution.  
Lysates/proteins: 25µg per lane.  
Blocking buffer: 3% nonfat dry milk in TBST.  
Detection: ECL Enhanced Kit (RM00021).  
Exposure time: 180s.



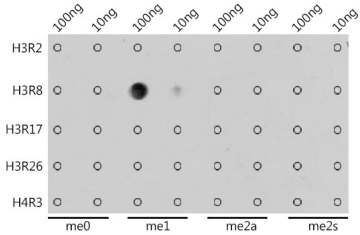
Immunohistochemistry analysis of MonoMethyl-Histone H3-R8 in paraffin-embedded human breast cancer using MonoMethyl-Histone H3-R8 Rabbit pAb (A3156) at dilution of 1:100 (40x lens). Perform microwave antigen retrieval with 10 mM PBS buffer pH 7.2 before commencing with IHC staining protocol.



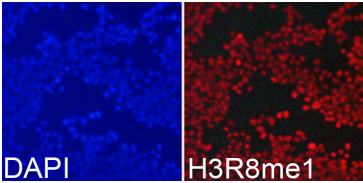
Immunohistochemistry analysis of MonoMethyl-Histone H3-R8 in paraffin-embedded rat heart using MonoMethyl-Histone H3-R8 Rabbit pAb (A3156) at dilution of 1:100 (40x lens). Perform microwave antigen retrieval with 10 mM PBS buffer pH 7.2 before commencing with IHC staining protocol.



Immunohistochemistry analysis of MonoMethyl-Histone H3-R8 in paraffin-embedded mouse testis using MonoMethyl-Histone H3-R8 Rabbit pAb (A3156) at dilution of 1:100 (40x lens). Perform microwave antigen retrieval with 10 mM PBS buffer pH 7.2 before commencing with IHC staining protocol.



Dot-blot analysis of all sorts of methylation peptides using MonoMethyl-Histone H3-R8 antibody (A3156) at 1:1000 dilution.



Immunofluorescence analysis of 293T cells using MonoMethyl-Histone H3-R8 Rabbit pAb (A3156). Blue: DAPI for nuclear staining.