

# SETD2 Rabbit pAb

Catalog No.: A3194

16 Publications

## Basic Information

### Observed MW

288kDa

### Calculated MW

288kDa

### Category

Primary antibody

### Applications

ELISA, WB, IF/ICC, IP

### Cross-Reactivity

Human, Mouse, Rat

## Background

Huntington's disease (HD), a neurodegenerative disorder characterized by loss of striatal neurons, is caused by an expansion of a polyglutamine tract in the HD protein huntingtin. This gene encodes a protein belonging to a class of huntingtin interacting proteins characterized by WW motifs. This protein is a histone methyltransferase that is specific for lysine-36 of histone H3, and methylation of this residue is associated with active chromatin. This protein also contains a novel transcriptional activation domain and has been found associated with hyperphosphorylated RNA polymerase II.

## Recommended Dilutions

**WB** 1:500 - 1:1000

**IF/ICC** 1:50 - 1:200

**IP** 0.5µg-4µg antibody for  
400µg-600µg extracts of  
whole cells

## Immunogen Information

### Gene ID

29072

### Swiss Prot

Q9BYW2

### Immunogen

A synthetic peptide corresponding to a sequence within amino acids 2475-2564 of human SETD2 (NP\_054878.5).

### Synonyms

LLS; HYPB; SET2; HIF-1; HIP-1; KMT3A; MRD70; RAPAS; HBP231; HSPC069; p231HBP; SETD2

## Contact

☎ | 400-999-6126

✉ | [cn.market@abclonal.com.cn](mailto:cn.market@abclonal.com.cn)

🌐 | [www.abclonal.com.cn](http://www.abclonal.com.cn)

## Product Information

### Source

Rabbit

### Isotype

IgG

### Purification

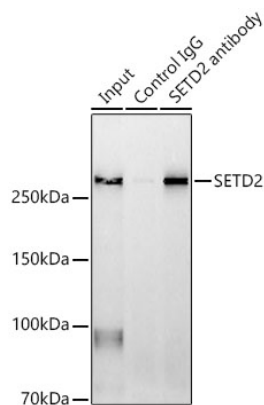
Affinity purification

### Storage

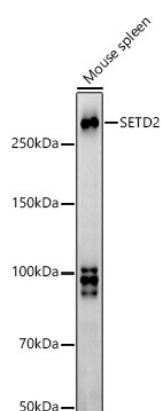
Store at -20°C. Avoid freeze / thaw cycles.

Buffer: PBS with 0.05% proclin300, 50% glycerol, pH7.3.

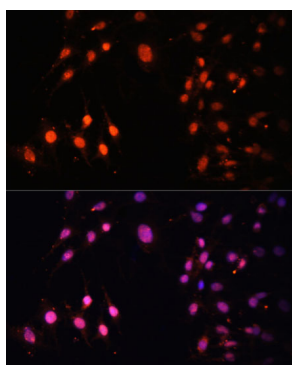
## Validation Data



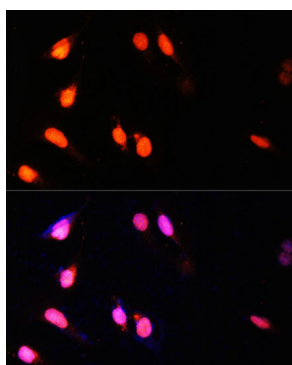
Immunoprecipitation analysis of 600 µg extracts of Mouse spleen using 3 µg SETD2 antibody (A3194). Western blot was performed from the immunoprecipitate using SETD2 antibody (A3194) at a dilution of 1:1000.



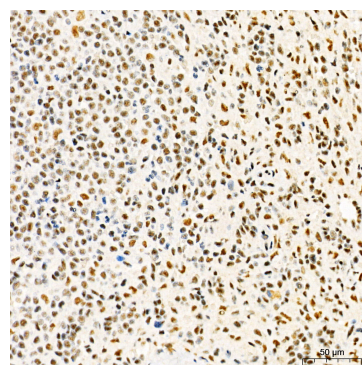
Western blot analysis of lysates from Mouse spleen, using SETD2 Rabbit pAb (A3194) at 1:900 dilution. Secondary antibody: HRP Goat Anti-Rabbit IgG (H+L) (AS014) at 1:10000 dilution. Lysates/proteins: 25µg per lane. Blocking buffer: 3% nonfat dry milk in TBST. Detection: ECL Basic Kit (RM00020). Exposure time: 90s.



Immunofluorescence analysis of C6 cells using SETD2 Rabbit pAb (A3194) at dilution of 1:100 (40x lens). Secondary antibody: Cy3 Goat Anti-Rabbit IgG (H+L) (AS007) at 1:500 dilution. Blue: DAPI for nuclear staining.



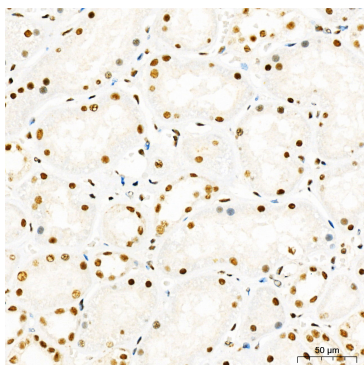
Immunofluorescence analysis of U-2 OS cells using SETD2 Rabbit pAb (A3194) at dilution of 1:100 (40x lens). Secondary antibody: Cy3 Goat Anti-Rabbit IgG (H+L) (AS007) at 1:500 dilution. Blue: DAPI for nuclear staining.



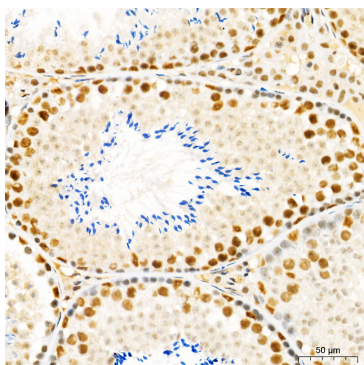
Immunohistochemistry analysis of paraffin-embedded Human spleen tissue using SETD2 Rabbit pAb (A3194) at a dilution of 1:1000 (40x lens). High pressure antigen retrieval performed with 0.01M Citrate Buffer (pH 6.0) prior to IHC staining.

## Validation Data

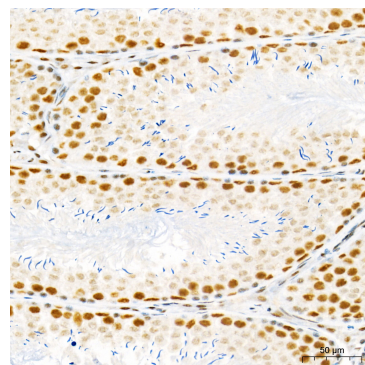
---



Immunohistochemistry analysis of paraffin-embedded Human kidney tissue using SETD2 Rabbit pAb (A3194) at a dilution of 1:1000 (40x lens). High pressure antigen retrieval performed with 0.01M Citrate Buffer (pH 6.0) prior to IHC staining.



Immunohistochemistry analysis of paraffin-embedded Mouse testis tissue using SETD2 Rabbit pAb (A3194) at a dilution of 1:1000 (40x lens). High pressure antigen retrieval performed with 0.01M Citrate Buffer (pH 6.0) prior to IHC staining.



Immunohistochemistry analysis of paraffin-embedded Rat testis tissue using SETD2 Rabbit pAb (A3194) at a dilution of 1:1000 (40x lens). High pressure antigen retrieval performed with 0.01M Citrate Buffer (pH 6.0) prior to IHC staining.