

# Desmin Rabbit mAb

Catalog No.: A3736

Recombinant

9 Publications

## Basic Information

### Observed MW

54kDa

### Calculated MW

54kDa

### Category

Primary antibody

### Applications

ELISA, WB, IHC-P, IF/ICC

### Cross-Reactivity

Human, Mouse, Rat

### CloneNo number

ARC0235

## Background

This gene encodes a muscle-specific class III intermediate filament. Homopolymers of this protein form a stable intracytoplasmic filamentous network connecting myofibrils to each other and to the plasma membrane. Mutations in this gene are associated with desmin-related myopathy, a familial cardiac and skeletal myopathy (CSM), and with distal myopathies.

## Recommended Dilutions

WB	1:1000 - 1:5000
IHC-P	1:1000 - 1:5000
IF/ICC	1:50 - 1:200

## Immunogen Information

### Gene ID

1674

### Swiss Prot

P17661

### Immunogen

A synthetic peptide corresponding to a sequence within amino acids 371-470 of human Desmin (P17661).

### Synonyms

CSM1; CSM2; CDCD3; LGMD1D; LGMD1E; LGMD2R; Desmin

## Contact

☎	400-999-6126
✉	cn.market@abclonal.com.cn
🌐	www.abclonal.com.cn

## Product Information

### Source

Rabbit

### Isotype

IgG

### Purification

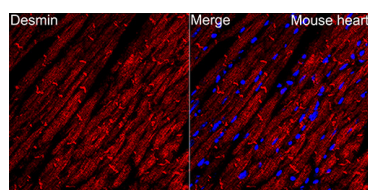
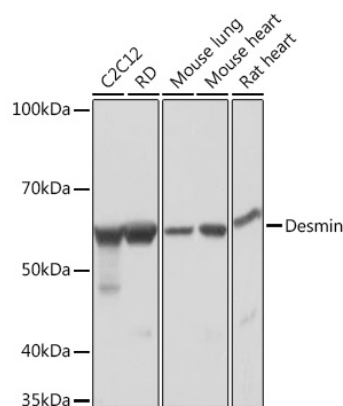
Affinity purification

### Storage

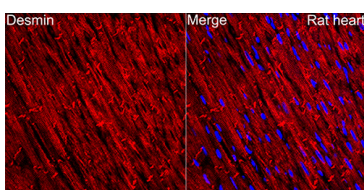
Store at -20°C. Avoid freeze / thaw cycles.

Buffer: PBS with 0.02% sodium azide, 0.05% BSA, 50% glycerol, pH7.3.

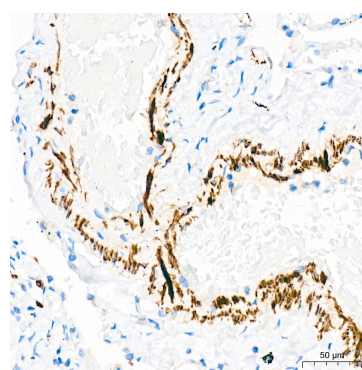
## Validation Data



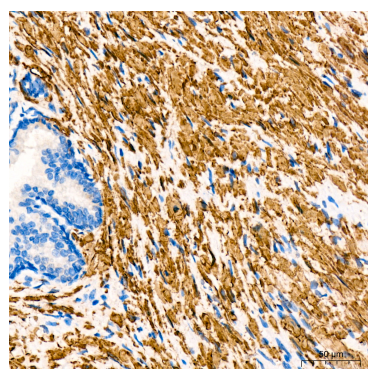
Immunofluorescence analysis of paraffin-embedded mouse heart using Desmin Rabbit mAb (A3736) at dilution of 1:100 (40x lens). Secondary antibody: Cy3 Goat Anti-Rabbit IgG (H+L) (AS007) at 1:500 dilution. Blue: DAPI for nuclear staining.



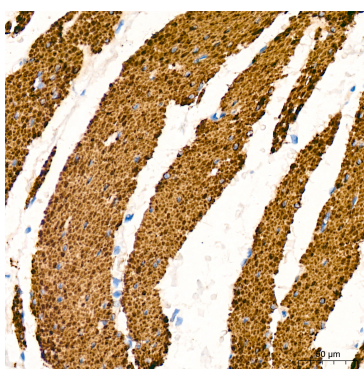
Immunofluorescence analysis of paraffin-embedded rat heart using Desmin Rabbit mAb (A3736) at dilution of 1:100 (40x lens). Secondary antibody: Cy3 Goat Anti-Rabbit IgG (H+L) (AS007) at 1:500 dilution. Blue: DAPI for nuclear staining.



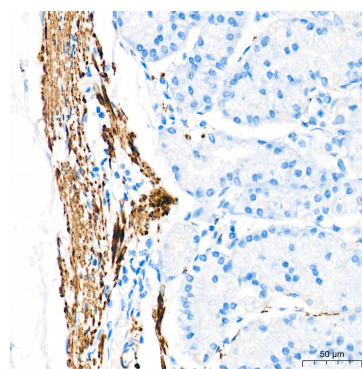
Immunohistochemistry analysis of Desmin in paraffin-embedded human lung tissue using Desmin Rabbit mAb (A3736) at a dilution of 1:1600 (40x lens). High pressure antigen retrieval was performed with 0.01 M Tris-EDTA buffer (pH 9.0) prior to IHC staining.



Immunohistochemistry analysis of Desmin in paraffin-embedded human prostate cancer tissue using Desmin Rabbit mAb (A3736) at a dilution of 1:1600 (40x lens). High pressure antigen retrieval was performed with 0.01 M Tris-EDTA buffer (pH 9.0) prior to IHC staining.



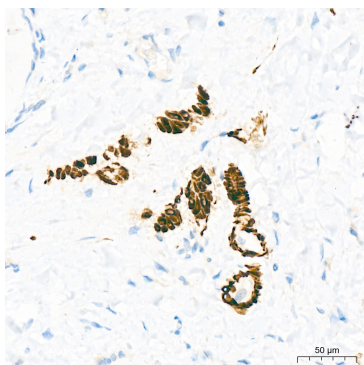
Immunohistochemistry analysis of Desmin in paraffin-embedded human smooth muscle tissue using Desmin Rabbit mAb (A3736) at a dilution of 1:1600 (40x lens). High pressure antigen retrieval was performed with 0.01 M Tris-EDTA buffer (pH 9.0) prior to IHC staining.



Immunohistochemistry analysis of Desmin in paraffin-embedded human stomach tissue using Desmin Rabbit mAb (A3736) at a dilution of 1:1600 (40x lens). High pressure antigen retrieval was performed with 0.01 M Tris-EDTA buffer (pH 9.0) prior to IHC staining.

## Validation Data

---



Immunohistochemistry analysis of Desmin in paraffin-embedded human thyroid tissue using Desmin Rabbit mAb (A3736) at a dilution of 1:1600 (40x lens). High pressure antigen retrieval was performed with 0.01 M Tris-EDTA buffer (pH 9.0) prior to IHC staining.