

# ABCF2 Rabbit pAb

Catalog No.: A4365

## Basic Information

### Observed MW

72kDa

### Calculated MW

71kDa

### Category

Primary antibody

### Applications

ELISA, WB, IF/ICC

### Cross-Reactivity

Human, Mouse

## Background

This gene encodes a member of the ATP-binding cassette (ABC) transporter superfamily. ATP-binding cassette proteins transport various molecules across extra- and intracellular membranes. Alterations in this gene may be involved in cancer progression. Related pseudogenes have been identified on chromosomes 3 and 7.

## Recommended Dilutions

**WB** 1:500 - 1:2000

**IF/ICC** 1:50 - 1:200

## Immunogen Information

### Gene ID

10061

### Swiss Prot

Q9UG63

### Immunogen

Recombinant fusion protein containing a sequence corresponding to amino acids 1-250 of human ABCF2 (NP\_005683.2).

### Synonyms

ABC28; HUSSY18; HUSSY-18; EST133090; ABCF2

## Contact

 | 400-999-6126

 | [cn.market@abclonal.com.cn](mailto:cn.market@abclonal.com.cn)

 | [www.abclonal.com.cn](http://www.abclonal.com.cn)

## Product Information

### Source

Rabbit

### Isotype

IgG

### Purification

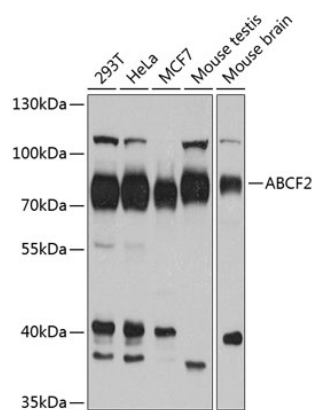
Affinity purification

### Storage

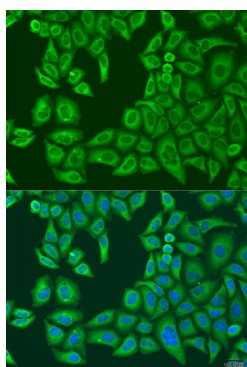
Store at -20°C. Avoid freeze / thaw cycles.

Buffer: PBS with 0.02% sodium azide, 50% glycerol, pH 7.3.

## Validation Data



Western blot analysis of extracts of various cell lines, using ABCF2 antibody (A4365) at 1:1000 dilution.  
Secondary antibody: HRP Goat Anti-Rabbit IgG (H+L) (AS014) at 1:10000 dilution.  
Lysates/proteins: 25µg per lane.  
Blocking buffer: 3% nonfat dry milk in TBST.  
Detection: ECL Basic Kit (RM00020).  
Exposure time: 60s.



Immunofluorescence analysis of U2OS cells using ABCF2 antibody (A4365) at dilution of 1:100. Blue: DAPI for nuclear staining.