

# ZEB1 Rabbit pAb

Catalog No.: A5600

15 Publications

## Basic Information

**Observed MW**

200kDa

**Calculated MW**

124kDa

**Category**

Primary antibody

**Applications**

ELISA, WB, IHC-P, IF/ICC

**Cross-Reactivity**

Human, Mouse, Rat

## Background

This gene encodes a zinc finger transcription factor. The encoded protein likely plays a role in transcriptional repression of interleukin 2. Mutations in this gene have been associated with posterior polymorphous corneal dystrophy-3 and late-onset Fuchs endothelial corneal dystrophy. Alternatively spliced transcript variants encoding different isoforms have been described.

## Recommended Dilutions

<b>WB</b>	1:500 - 1:2000
<b>IHC-P</b>	1:50 - 1:200
<b>IF/ICC</b>	1:50 - 1:200

## Immunogen Information

**Gene ID**

6935

**Swiss Prot**

P37275

**Immunogen**

A synthetic peptide corresponding to a sequence within amino acids 800-900 of human ZEB1 (NP\_110378.3).

**Synonyms**

BZP; TCF8; AREB6; FECD6; NIL2A; PPCD3; ZFHEP; ZFH1A; DELTAEF1; ZEB1

## Contact

	400-999-6126
	cn.market@abclonal.com.cn
	www.abclonal.com.cn

## Product Information

**Source**

Rabbit

**Isotype**

IgG

**Purification**

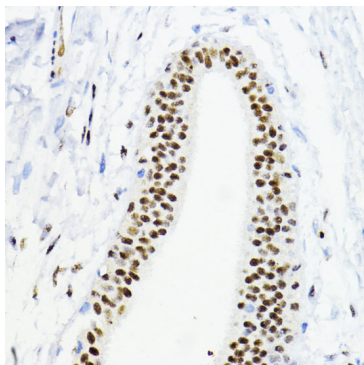
Affinity purification

**Storage**

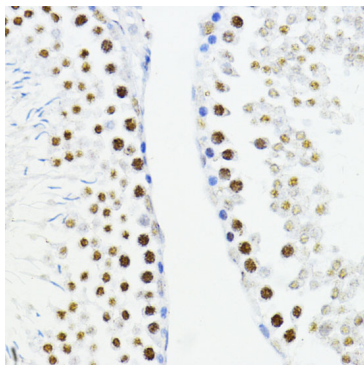
Store at -20°C. Avoid freeze / thaw cycles.

Buffer: PBS with 0.01% thimerosal, 50% glycerol, pH7.3.

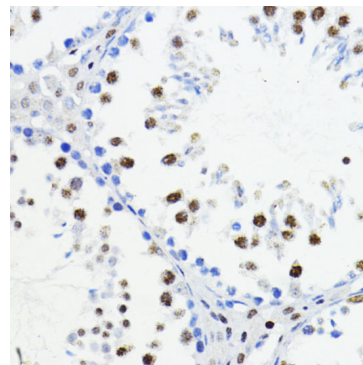
## Validation Data



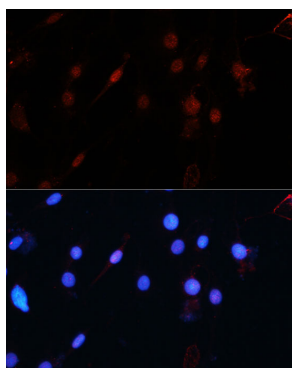
Immunohistochemistry analysis of ZEB1 in paraffin-embedded human mammary cancer using ZEB1 Rabbit pAb (A5600) at dilution of 1:200 (40x lens). Perform microwave antigen retrieval with 10 mM PBS buffer pH 7.2 before commencing with IHC staining protocol.



Immunohistochemistry analysis of ZEB1 in paraffin-embedded rat testis using ZEB1 Rabbit pAb (A5600) at dilution of 1:200 (40x lens). Perform microwave antigen retrieval with 10 mM PBS buffer pH 7.2 before commencing with IHC staining protocol.



Immunohistochemistry analysis of ZEB1 in paraffin-embedded mouse testis using ZEB1 Rabbit pAb (A5600) at dilution of 1:200 (40x lens). Perform microwave antigen retrieval with 10 mM PBS buffer pH 7.2 before commencing with IHC staining protocol.



Immunofluorescence analysis of C6 cells using ZEB1 Rabbit pAb (A5600) at dilution of 1:100 (40x lens). Secondary antibody: Cy3 Goat Anti-Rabbit IgG (H+L) (A5007) at 1:500 dilution. Blue: DAPI for nuclear staining.