

Pan DiMethyl-lysine Rabbit pAb

Catalog No.: A5870

1 Publications

Basic Information

Observed MW

15-60kDa

Calculated MW**Category**

Primary antibody

Applications

ELISA, WB, IHC-P, IF/ICC

Cross-Reactivity

Human, Mouse, Rat, Other (Wide Range Predicted)

Background

Methylation is a major post-translational modification (PTM) generated by methyltransferase on target proteins, protein methylation plays important regulatory roles in gene expression, protein activity and stability, and signal transduction. Methylation can occur on specific lysine or arginine residues localized within regulatory domains in both histone and nonhistone proteins, thereby allowing distinguished properties of the targeted protein. Lysine can be methylated to different degrees, including mono-, di-, or trimethylation, which reflects its functional diversity and regulatory complexity compared to other PTMs. Lys9 of histone H3 is mono- or di-methylated by G9A/GLP and tri-methylated by SETDB1 to activate transcription. Tumor suppressor p53 is regulated by methylation of at least four sites. p53-mediated transcription is repressed following mono-methylation of p53 at Lys370 by SMYD2; Di-methylation at the same residue further inhibits p53 by preventing association with 53BP1. Concomitant di-methylation at Lys382 inhibits p53 ubiquitination following DNA damage. Di-methylation at Lys373 by G9A/GLP inhibits p53-mediated apoptosis and correlates with tri-methylation of histone H3 Lys9 at the p21 promoter.

Recommended Dilutions

WB	1:100 - 1:500
IHC-P	1:50 - 1:100
IF/ICC	1:50 - 1:100

Immunogen Information

Gene ID**Swiss Prot****Immunogen**

A synthetic peptide corresponding to a sequence containing dimethylated K.

Synonyms

Contact

☎	400-999-6126
✉	cn.market@abclonal.com.cn
🌐	www.abclonal.com.cn

Product Information

Source

Rabbit

Isotype

IgG

Purification

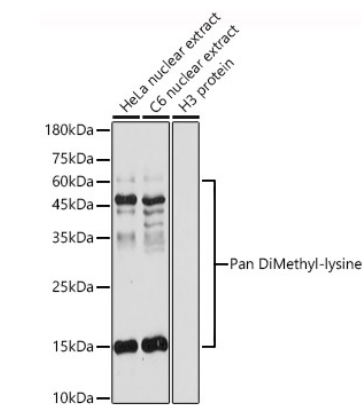
Affinity purification

Storage

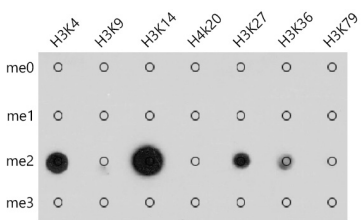
Store at -20°C. Avoid freeze / thaw cycles.

Buffer: PBS with 0.02% sodium azide, 50% glycerol, pH7.3.

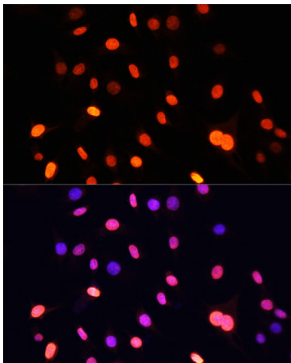
Validation Data



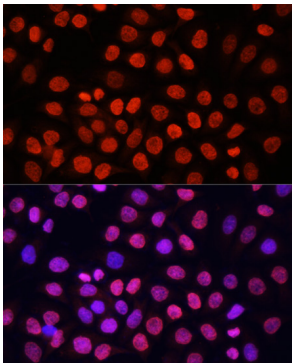
Western blot analysis of various lysates using Pan DiMethyl-lysine Rabbit pAb (A5870) at 1:500 dilution. Secondary antibody: HRP Goat Anti-Rabbit IgG (H+L) (AS014) at 1:10000 dilution. Lysates/proteins: 25µg per lane. Blocking buffer: 3% nonfat dry milk in TBST. Detection: ECL Basic Kit (RM00020). Exposure time: 10s.



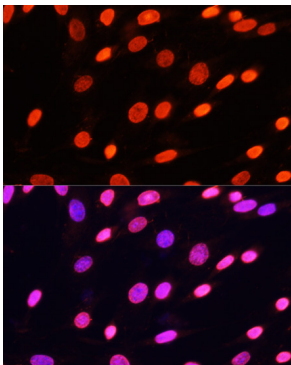
Dot-blot analysis of all sorts of methylation peptides using Pan DiMethyl-lysine antibody (A5870) at 1:1000 dilution.



Immunofluorescence analysis of C6 cells using Pan DiMethyl-lysine Rabbit pAb (A5870) at dilution of 1:100. Secondary antibody: Cy3 Goat Anti-Rabbit IgG (H+L) (AS007) at 1:500 dilution. Blue: DAPI for nuclear staining.



Immunofluorescence analysis of HeLa cells using Pan DiMethyl-lysine Rabbit pAb (A5870) at dilution of 1:100. Secondary antibody: Cy3 Goat Anti-Rabbit IgG (H+L) (AS007) at 1:500 dilution. Blue: DAPI for nuclear staining.



Immunofluorescence analysis of NIH/3T3 cells using Pan DiMethyl-lysine Rabbit pAb (A5870) at dilution of 1:100. Secondary antibody: Cy3 Goat Anti-Rabbit IgG (H+L) (AS007) at 1:500 dilution. Blue: DAPI for nuclear staining.