

G3BP2 Rabbit pAb

Catalog No.: A6026 **3 Publications**

Basic Information

Observed MW

60kDa

Calculated MW

54kDa

Category

Primary antibody

Applications

ELISA, WB, IHC-P

Cross-Reactivity

Human, Mouse, Rat

Background

Enables RNA binding activity. Involved in positive regulation of stress granule assembly and protein homooligomerization. Located in cytoplasmic stress granule and cytosol.

Recommended Dilutions

WB 1:500 - 1:2000

IHC-P 1:50 - 1:200

Immunogen Information

Gene ID

9908

Swiss Prot

Q9UN86

Immunogen

Recombinant fusion protein containing a sequence corresponding to amino acids 140-280 of human G3BP2 (NP_987100.1).

Synonyms

G3BP2

Contact

 | 400-999-6126

 | cn.market@abclonal.com.cn

 | www.abclonal.com.cn

Product Information

Source

Rabbit

Isotype

IgG

Purification

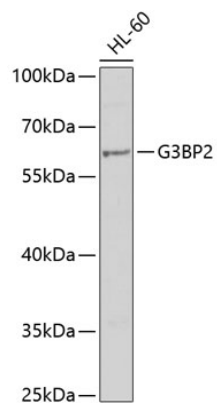
Affinity purification

Storage

Store at -20°C. Avoid freeze / thaw cycles.

Buffer: PBS with 0.02% sodium azide, 50% glycerol, pH 7.3.

Validation Data



Western blot analysis of extracts of HL-60 cells, using G3BP2 antibody (A6026) at 1:1000 dilution.
Secondary antibody: HRP Goat Anti-Rabbit IgG (H+L) (AS014) at 1:10000 dilution.
Lysates/proteins: 25µg per lane.
Blocking buffer: 3% nonfat dry milk in TBST.
Detection: ECL Basic Kit (RM00020).
Exposure time: 15s.