

PIWIL2 Rabbit pAb

Catalog No.: A6044 **2 Publications**

Basic Information

Observed MW

110kDa

Calculated MW

105kDa/109kDa

Category

Primary antibody

Applications

ELISA, WB

Cross-Reactivity

Mouse, Rat

Background

Enables RNA binding activity; endoribonuclease activity; and polysome binding activity. Involved in several processes, including germ-line stem cell population maintenance; nucleic acid metabolic process; and positive regulation of cellular protein metabolic process. Acts upstream of or within oogenesis and positive regulation of meiosis I. Located in several cellular components, including cytoplasmic ribonucleoprotein granule; dense body; and perinucleolar chromocenter. Part of PET complex. Is expressed in central nervous system; genitourinary system; and sensory organ. Orthologous to human PIWIL2 (piwi like RNA-mediated gene silencing 2).

Recommended Dilutions

WB 1:1000 - 1:3000

Immunogen Information

Gene ID

57746

Swiss Prot

Immunogen

Recombinant fusion protein containing a sequence corresponding to amino acids 398-652 of mouse PIWIL2 (Q8CDG1).

Synonyms

mili; Piwil1; PIWIL2

Contact

☎ | 400-999-6126

✉ | cn.market@abclonal.com.cn

🌐 | www.abclonal.com.cn

Product Information

Source

Rabbit

Isotype

IgG

Purification

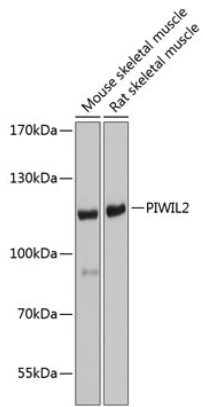
Affinity purification

Storage

Store at -20°C. Avoid freeze / thaw cycles.

Buffer: PBS with 0.02% sodium azide, 50% glycerol, pH7.3.

Validation Data



Western blot analysis of extracts of various cell lines, using PIWIL2 antibody (A6044) at 1:1000 dilution.
Secondary antibody: HRP Goat Anti-Rabbit IgG (H+L) (AS014) at 1:10000 dilution.
Lysates/proteins: 25µg per lane.
Blocking buffer: 3% nonfat dry milk in TBST.
Detection: ECL Basic Kit (RM00020).
Exposure time: 5s.