

# IL22 Rabbit pAb

Catalog No.: A6216 **2 Publications**

## Basic Information

### Observed MW

16kDa

### Calculated MW

20kDa

### Category

Primary antibody

### Applications

ELISA, WB, IF/ICC

### Cross-Reactivity

Human, Mouse, Rat

## Background

This gene is a member of the IL10 family of cytokines that mediate cellular inflammatory responses. The encoded protein functions in antimicrobial defense at mucosal surfaces and in tissue repair. This protein also has pro-inflammatory properties and plays a role in the pathogenesis of several intestinal diseases. The encoded protein is a crucial cytokine that regulates host immunity in infectious diseases, including COVID-19 (disease caused by SARS-CoV-2).

## Recommended Dilutions

<b>WB</b>	1:500 - 1:1000
<b>IF/ICC</b>	1:50 - 1:200

## Immunogen Information

### Gene ID

50616

### Swiss Prot

Q9GZX6

### Immunogen

Recombinant fusion protein containing a sequence corresponding to amino acids 34-179 of human IL22 (NP\_065386.1).

### Synonyms

TIFa; IL-21; IL-22; ILTIF; IL-TIF; IL-D110; zcyto18; TIFIL-23; IL22

## Contact

☎ | 400-999-6126

✉ | [cn.market@abclonal.com.cn](mailto:cn.market@abclonal.com.cn)

🌐 | [www.abclonal.com.cn](http://www.abclonal.com.cn)

## Product Information

### Source

Rabbit

### Isotype

IgG

### Purification

Affinity purification

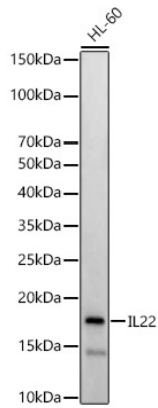
### Storage

Store at -20°C. Avoid freeze / thaw cycles.

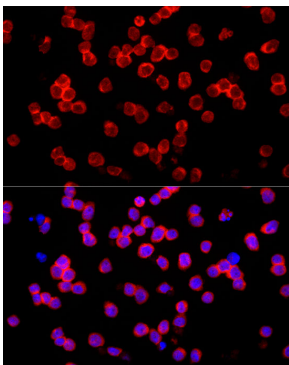
Buffer: PBS with 0.05% proclin300, 50% glycerol, pH7.3.

## Validation Data

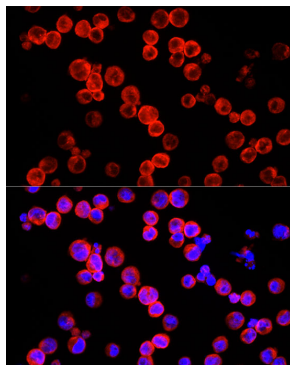
---



Western blot analysis of lysates from HL-60 cells, using IL22 Rabbit pAb (A6216) at 1:900 dilution.  
Secondary antibody: HRP Goat Anti-Rabbit IgG (H+L) (AS014) at 1:10000 dilution.  
Lysates/proteins: 25µg per lane.  
Blocking buffer: 3% nonfat dry milk in TBST.  
Detection: ECL Basic Kit (RM00020).  
Exposure time: 180s.



Immunofluorescence analysis of HL-60 cells using IL22 Rabbit pAb (A6216) at dilution of 1:100 (40x lens). Secondary antibody: Cy3 Goat Anti-Rabbit IgG (H+L) (AS007) at 1:500 dilution. Blue: DAPI for nuclear staining.



Immunofluorescence analysis of Raji cells using IL22 Rabbit pAb (A6216) at dilution of 1:100 (40x lens). Secondary antibody: Cy3 Goat Anti-Rabbit IgG (H+L) (AS007) at 1:500 dilution. Blue: DAPI for nuclear staining.