

# [KO Validated] Flotillin 1 Rabbit pAb

Catalog No.: A6220 **KO** **Validated** **2 Publications**

## Basic Information

### Observed MW

47kDa

### Calculated MW

47kDa

### Category

Primary antibody

### Applications

ELISA, WB, IHC-P, IF/ICC, IP

### Cross-Reactivity

Human, Mouse, Rat

## Background

This gene encodes an protein that localizes to the caveolae, which are small domains on the inner cell membranes. This protein plays a role in vesicle trafficking and cell morphology. Alternative splicing results in multiple transcript variants.

## Recommended Dilutions

<b>WB</b>	1:500 - 1:2000
<b>IHC-P</b>	1:50 - 1:200
<b>IF/ICC</b>	1:50 - 1:200
<b>IP</b>	0.5µg-4µg antibody for 200µg-400µg extracts of whole cells

## Immunogen Information

### Gene ID

10211

### Swiss Prot

O75955

### Immunogen

Recombinant fusion protein containing a sequence corresponding to amino acids 155-427 of human Flotillin 1 (NP\_005794.1).

### Synonyms

FLOT1; 1

## Contact

☎	400-999-6126
✉	cn.market@abclonal.com.cn
🌐	www.abclonal.com.cn

## Product Information

### Source

Rabbit

### Isotype

IgG

### Purification

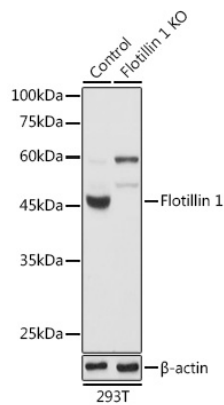
Affinity purification

### Storage

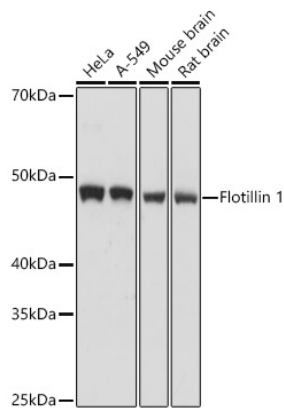
Store at -20°C. Avoid freeze / thaw cycles.

Buffer: PBS with 0.01% thimerosal, 50% glycerol, pH7.3.

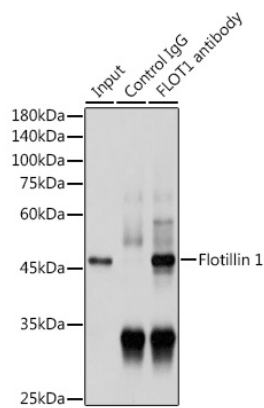
Validation Data



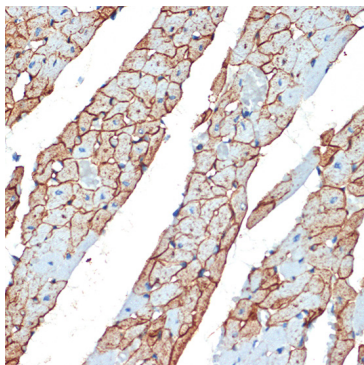
Western blot analysis of lysates from wild type (WT) and Flotillin 1 knockout (KO) 293T cells, using [KO Validated] Flotillin 1 Rabbit pAb (A6220) at 1:1000 dilution.  
Secondary antibody: HRP Goat Anti-Rabbit IgG (H+L) (AS014) at 1:10000 dilution.  
Lysates/proteins: 25µg per lane.  
Blocking buffer: 3% nonfat dry milk in TBST.  
Detection: ECL Basic Kit (RM00020).  
Exposure time: 1s.



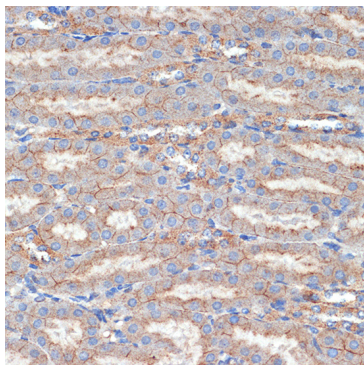
Western blot analysis of various lysates, using [KO Validated] Flotillin 1 Rabbit pAb (A6220) at 1:1000 dilution.  
Secondary antibody: HRP Goat Anti-Rabbit IgG (H+L) (AS014) at 1:10000 dilution.  
Lysates/proteins: 25µg per lane.  
Blocking buffer: 3% nonfat dry milk in TBST.  
Detection: ECL Basic Kit (RM00020).  
Exposure time: 1s.



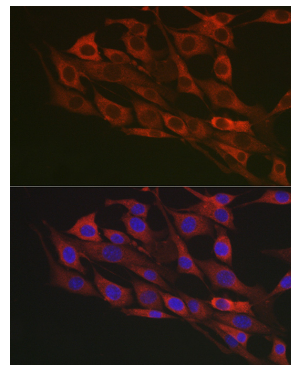
Immunoprecipitation analysis of 300 µg extracts of HeLa cells using 3 µg Flotillin 1 antibody (A6220).  
Western blot was performed from the immunoprecipitate using Flotillin 1 antibody (A6220) at a dilution of 1:1000.



Immunohistochemistry analysis of Flotillin 1 in paraffin-embedded rat heart using [KO Validated] Flotillin 1 Rabbit pAb (A6220) at dilution of 1:100 (40x lens). Perform microwave antigen retrieval with 10 mM Tris/EDTA buffer pH 9.0 before commencing with IHC staining protocol.



Immunohistochemistry analysis of Flotillin 1 in paraffin-embedded mouse kidney using [KO Validated] Flotillin 1 Rabbit pAb (A6220) at dilution of 1:100 (40x lens). Perform microwave antigen retrieval with 10 mM Tris/EDTA buffer pH 9.0 before commencing with IHC staining protocol.



Immunofluorescence analysis of NIH/3T3 cells using Flotillin 1 Rabbit pAb (A6220) at dilution of 1:100 (40x lens). Secondary antibody: Cy3 Goat Anti-Rabbit IgG (H+L) (AS007) at 1:500 dilution. Blue: DAPI for nuclear staining.