

# JADE1 Rabbit pAb

**Catalog No.: A6337**

## Basic Information

### Observed MW

108kDa

### Calculated MW

96kDa

### Category

Primary antibody

### Applications

ELISA, WB, IF/ICC

### Cross-Reactivity

Human, Mouse

## Background

Enables transcription coactivator activity. Involved in histone acetylation and negative regulation of canonical Wnt signaling pathway. Acts upstream of or within negative regulation of G1/S transition of mitotic cell cycle. Located in several cellular components, including ciliary basal body; cytosol; and nuclear speck. Part of histone acetyltransferase complex.

## Recommended Dilutions

**WB** 1:500 - 1:2000

**IF/ICC** 1:10 - 1:100

## Immunogen Information

### Gene ID

79960

### Swiss Prot

Q6IE81

### Immunogen

Recombinant fusion protein containing a sequence corresponding to amino acids 210-509 of human JADE1 (NP\_079176.2).

### Synonyms

PHF17; JADE1

## Contact

 | 400-999-6126

 | [cn.market@abclonal.com.cn](mailto:cn.market@abclonal.com.cn)

 | [www.abclonal.com.cn](http://www.abclonal.com.cn)

## Product Information

### Source

Rabbit

### Isotype

IgG

### Purification

Affinity purification

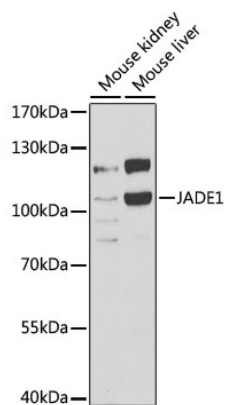
### Storage

Store at -20°C. Avoid freeze / thaw cycles.

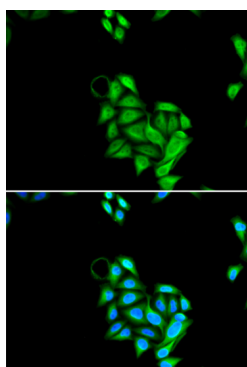
Buffer: PBS with 0.02% sodium azide, 50% glycerol, pH 7.3.

## Validation Data

---



Western blot analysis of extracts of various cell lines, using JADE1 antibody (A6337) at 1:1000 dilution.  
Secondary antibody: HRP Goat Anti-Rabbit IgG (H+L) (AS014) at 1:10000 dilution.  
Lysates/proteins: 25µg per lane.  
Blocking buffer: 3% nonfat dry milk in TBST.  
Detection: ECL Basic Kit (RM00020).  
Exposure time: 60s.



Immunofluorescence analysis of U2OS cells using JADE1 antibody (A6337). Blue: DAPI for nuclear staining.