

TUFM Rabbit pAb

Catalog No.: A6423

5 Publications

Basic Information

Observed MW

49kDa

Calculated MW

50kDa

Category

Primary antibody

Applications

ELISA, WB, IHC-P, IF/ICC, IP

Cross-Reactivity

Human, Mouse, Rat

Background

This gene encodes a protein which participates in protein translation in mitochondria. Mutations in this gene have been associated with combined oxidative phosphorylation deficiency resulting in lactic acidosis and fatal encephalopathy. A pseudogene has been identified on chromosome 17.

Recommended Dilutions

WB	1:500 - 1:1000
IHC-P	1:50 - 1:200
IF/ICC	1:10 - 1:100
IP	0.5µg-4µg antibody for 200µg-400µg extracts of whole cells

Immunogen Information

Gene ID

7284

Swiss Prot

P49411

Immunogen

Recombinant fusion protein containing a sequence corresponding to amino acids 186-455 of human TUFM (NP_003312.3).

Synonyms

P43; EFTU; COXPD4; EF-TuMT; TUFM

Contact

☎	400-999-6126
✉	cn.market@abclonal.com.cn
🌐	www.abclonal.com.cn

Product Information

Source

Rabbit

Isotype

IgG

Purification

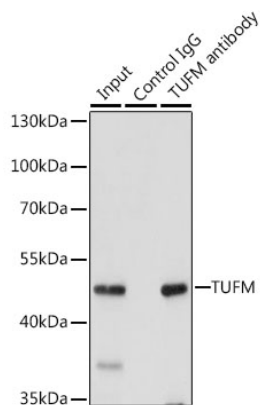
Affinity purification

Storage

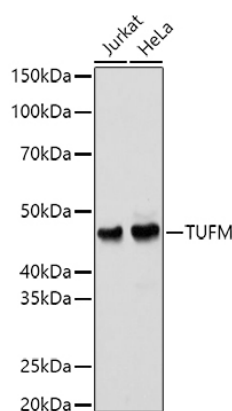
Store at -20°C. Avoid freeze / thaw cycles.

Buffer: PBS with 0.02% sodium azide, 50% glycerol, pH7.3.

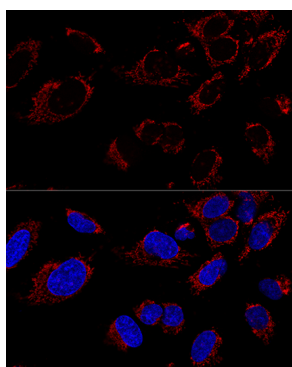
Validation Data



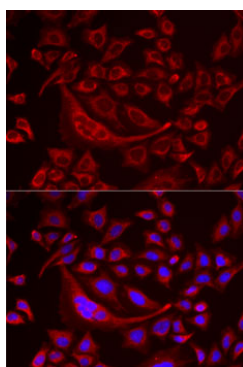
Immunoprecipitation analysis of 200 µg extracts of 293T cells, using 3 µg TUFM antibody (A6423). Western blot was performed from the immunoprecipitate using TUFM antibody (A6423) at a dilution of 1:1000.



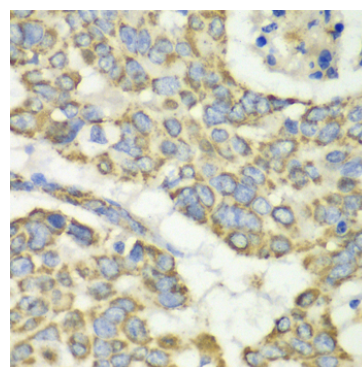
Western blot analysis of various lysates using TUFM Rabbit pAb (A6423) at 1:1000 dilution. Secondary antibody: HRP Goat Anti-Rabbit IgG (H+L) (AS014) at 1:10000 dilution. Lysates/proteins: 25µg per lane. Blocking buffer: 3% nonfat dry milk in TBST. Detection: ECL Basic Kit (RM00020). Exposure time: 1s.



Confocal immunofluorescence analysis of U2OS cells using TUFM Rabbit pAb (A6423) at dilution of 1:100. Blue: DAPI for nuclear staining.



Immunofluorescence analysis of MCF7 cells using TUFM Rabbit pAb (A6423). Secondary antibody: Cy3 Goat Anti-Rabbit IgG (H+L) (AS007) at 1:500 dilution. Blue: DAPI for nuclear staining.



Immunohistochemistry analysis of TUFM in paraffin-embedded human esophageal cancer using TUFM Rabbit pAb (A6423) at dilution of 1:100 (40x lens). Perform microwave antigen retrieval with 10 mM PBS buffer pH 7.2 before commencing with IHC staining protocol.