

# KDM4B/JMJD2B Rabbit mAb

Catalog No.: A6670 **Recombinant** **4 Publications**

## Basic Information

### Observed MW

150kDa

### Calculated MW

122kDa

### Category

Primary antibody

### Applications

ELISA, WB, IF/ICC, IP, ChIP

### Cross-Reactivity

Human, Mouse, Rat

### CloneNo number

ARC1416

## Background

Enables histone H3-methyl-lysine-36 demethylase activity and histone H3-methyl-lysine-9 demethylase activity. Involved in histone H3-K36 demethylation and histone H3-K9 demethylation. Located in cytosol and nucleoplasm. Implicated in autosomal dominant non-syndromic intellectual disability; breast cancer; colorectal cancer; malignant peripheral nerve sheath tumor; and stomach cancer. Biomarker of several diseases, including alopecia areata; lung cancer; medulloblastoma; prostate cancer; and stomach cancer.

## Recommended Dilutions

**WB** 1:500 - 1:2000

**IF/ICC** 1:50 - 1:200

**IP** 0.5µg-4µg antibody for  
200µg-400µg extracts of  
whole cells

**ChIP** 5µg antibody for  
10µg-15µg of Chromatin

## Immunogen Information

### Gene ID

23030

### Swiss Prot

O94953

### Immunogen

A synthetic peptide corresponding to a sequence within amino acids 50-150 of human KDM4B/JMJD2B (O94953).

### Synonyms

MRD65; JMJD2B; TDRD14B; KDM4B/JMJD2B

## Contact

☎ | 400-999-6126

✉ | [cn.market@abclonal.com.cn](mailto:cn.market@abclonal.com.cn)

🌐 | [www.abclonal.com.cn](http://www.abclonal.com.cn)

## Product Information

### Source

Rabbit

### Isotype

IgG

### Purification

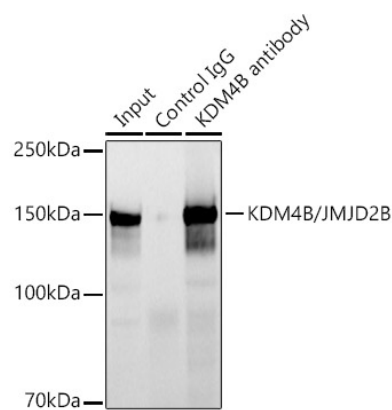
Affinity purification

### Storage

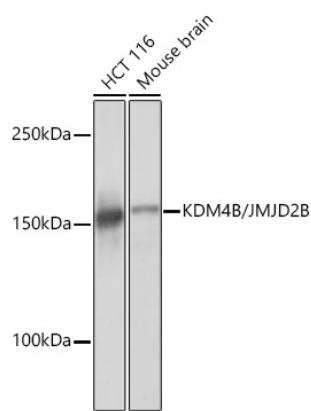
Store at -20°C. Avoid freeze / thaw cycles.

Buffer: PBS with 0.02% sodium azide, 0.05% BSA, 50% glycerol, pH7.3.

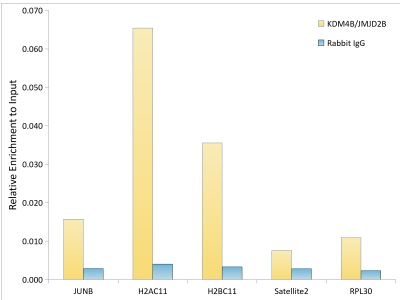
Validation Data



Immunoprecipitation analysis of 300 µg extracts of HCT116 cells using 3 µg KDM4B/JMJD2B antibody (A6670). Western blot was performed from the immunoprecipitate using KDM4B/JMJD2B antibody (A6670) at a dilution of 1:1000.



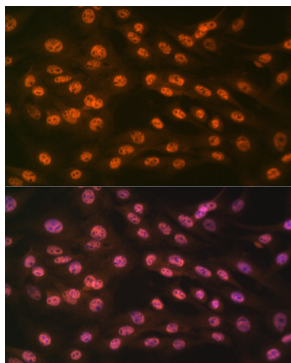
Western blot analysis of various lysates using KDM4B/JMJD2B Rabbit mAb (A6670) at 1:1000 dilution. Secondary antibody: HRP Goat Anti-Rabbit IgG (H+L) (A5014) at 1:10000 dilution. Lysates/proteins: 25µg per lane. Blocking buffer: 3% nonfat dry milk in TBST. Detection: ECL Basic Kit (RM00020). Exposure time: 1s.



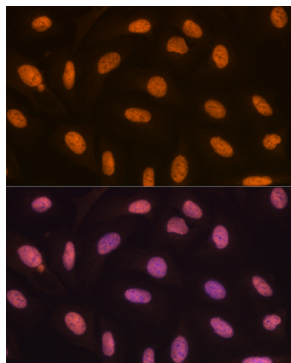
Chromatin immunoprecipitation analysis of extracts of 5637; cells, using KDM4B/JMJD2B antibody (A6670) and rabbit IgG. The amount of immunoprecipitated DNA was checked by quantitative PCR. Histogram was constructed by the ratios of the immunoprecipitated DNA to the input.

## Validation Data

---



Immunofluorescence analysis of C6 cells using KDM4B/JMJD2B Rabbit mAb (A6670) at dilution of 1:100 (40x lens). Secondary antibody: Cy3 Goat Anti-Rabbit IgG (H+L) (AS007) at 1:500 dilution. Blue: DAPI for nuclear staining.



Immunofluorescence analysis of U-2 OS cells using KDM4B/JMJD2B Rabbit mAb (A6670) at dilution of 1:100 (40x lens). Secondary antibody: Cy3 Goat Anti-Rabbit IgG (H+L) (AS007) at 1:500 dilution. Blue: DAPI for nuclear staining.