

ZBED1 Rabbit pAb

Catalog No.: A6792

Basic Information

Observed MW

78kDa

Calculated MW

78kDa

Category

Primary antibody

Applications

ELISA, WB, IHC-P, IF/ICC

Cross-Reactivity

Human

Background

This gene is located in the pseudoautosomal region 1 (PAR1) of X and Y chromosomes. It was earlier identified as a gene with similarity to Ac transposable elements, however, was found not to have transposase activity. Later studies show that this gene product is localized in the nucleus and functions as a transcription factor. It binds to DNA elements found in the promoter regions of several genes related to cell proliferation, such as histone H1, hence may have a role in regulating genes related to cell proliferation. Alternatively spliced transcript variants with different 5' untranslated region have been found for this gene.

Recommended Dilutions

| | |
|---------------|----------------|
| WB | 1:500 - 1:1000 |
| IHC-P | 1:50 - 1:200 |
| IF/ICC | 1:50 - 1:200 |

Immunogen Information

Gene ID

9189

Swiss Prot

O96006

Immunogen

Recombinant fusion protein containing a sequence corresponding to amino acids 1-280 of human ZBED1 (NP_001164607.1).

Synonyms

ALTE; DREF; TRAMP; hDREF; ZBED1

Contact

| | | |
|--|--|--|
|  | | 400-999-6126 |
|  | | cn.market@abclonal.com.cn |
|  | | www.abclonal.com.cn |

Product Information

Source

Rabbit

Isotype

IgG

Purification

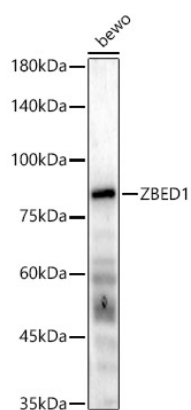
Affinity purification

Storage

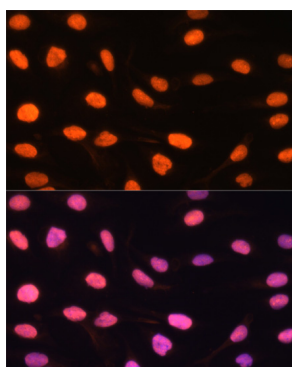
Store at -20°C. Avoid freeze / thaw cycles.

Buffer: PBS with 0.02% sodium azide, 50% glycerol, pH 7.3.

Validation Data



Western blot analysis of bewo, using ZBED1 Rabbit pAb (A6792) at 1:1000 dilution.
Secondary antibody: HRP Goat Anti-Rabbit IgG (H+L) (AS014) at 1:10000 dilution.
Lysates/proteins: 25µg per lane.
Blocking buffer: 3% nonfat dry milk in TBST.
Detection: ECL Basic Kit (RM00020).
Exposure time: 60s.



Immunofluorescence analysis of U-2 OS cells using ZBED1 antibody (A6792) at dilution of 1:100. Blue: DAPI for nuclear staining.