

ADAM15 Rabbit mAb

Catalog No.: A6813

Recombinant

1 Publications

Basic Information

Observed MW

100kDa

Calculated MW

55kDa/88kDa/89kDa/90kDa/93kDa

Category

Primary antibody

Applications

ELISA, WB, IHC-P, IF/ICC

Cross-Reactivity

Human, Mouse, Rat

CloneNo number

ARC1419

Background

The protein encoded by this gene is a member of the ADAM (a disintegrin and metalloproteinase) protein family. ADAM family members are type I transmembrane glycoproteins known to be involved in cell adhesion and proteolytic ectodomain processing of cytokines and adhesion molecules. This protein contains multiple functional domains including a zinc-binding metalloprotease domain, a disintegrin-like domain, as well as a EGF-like domain. Through its disintegrin-like domain, this protein specifically interacts with the integrin beta chain, beta 3. It also interacts with Src family protein-tyrosine kinases in a phosphorylation-dependent manner, suggesting that this protein may function in cell-cell adhesion as well as in cellular signaling. Multiple alternatively spliced transcript variants encoding distinct isoforms have been observed.

Recommended Dilutions

WB	1:500 - 1:1000
IHC-P	1:50 - 1:200
IF/ICC	1:50 - 1:200

Immunogen Information

Gene ID

8751

Swiss Prot

Q13444

Immunogen

A synthetic peptide corresponding to a sequence within amino acids 200-300 of human ADAM15 (Q13444).

Synonyms

MDC15; ADAM15

Contact

	400-999-6126
	cn.market@abclonal.com.cn
	www.abclonal.com.cn

Product Information

Source

Rabbit

Isotype

IgG

Purification

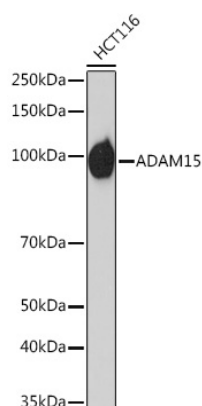
Affinity purification

Storage

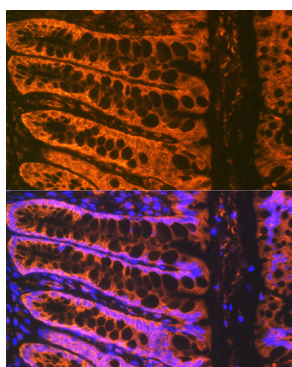
Store at -20°C. Avoid freeze / thaw cycles.

Buffer: PBS with 0.02% sodium azide, 0.05% BSA, 50% glycerol, pH7.3.

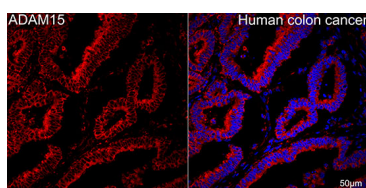
Validation Data



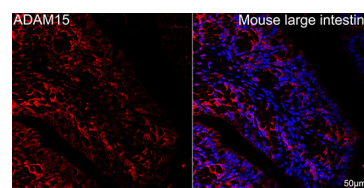
Western blot analysis of extracts of HCT116 cells, using ADAM15 Rabbit mAb (A6813) at 1:1000 dilution. Secondary antibody: HRP Goat Anti-Rabbit IgG (H+L) (AS014) at 1:10000 dilution. Lysates/proteins: 25µg per lane. Blocking buffer: 3% nonfat dry milk in TBST. Detection: ECL Basic Kit (RM00020). Exposure time: 60s.



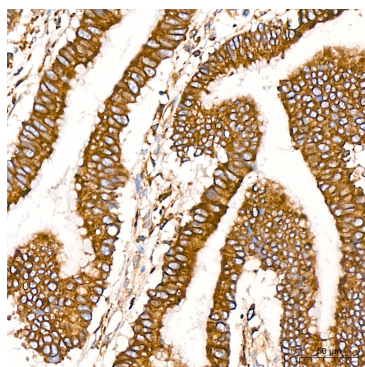
Immunofluorescence analysis of rat rectum using ADAM15 Rabbit mAb (A6813) at dilution of 1:100 (40x lens). Blue: DAPI for nuclear staining.



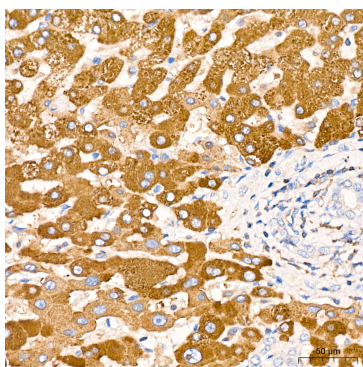
Confocal imaging of paraffin-embedded Human colon cancer using ADAM15 Rabbit mAb (A6813, dilution 1:200) followed by a further incubation with Cy3 Goat Anti-Rabbit IgG (H+L) (AS007, dilution 1:500) (Red). DAPI was used for nuclear staining (Blue). Objective: 40x. Perform high pressure antigen retrieval with 0.01M citrate buffer (pH 6.0) prior to IF staining.



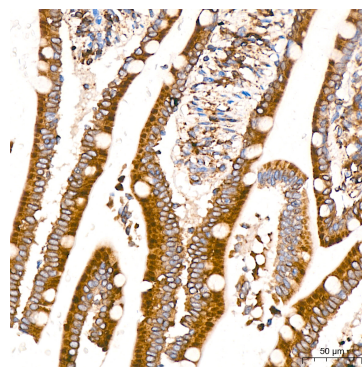
Confocal imaging of paraffin-embedded mouse large intestine using ADAM15 Rabbit mAb (A6813, dilution 1:200) followed by a further incubation with Cy3 Goat Anti-Rabbit IgG (H+L) (AS007, dilution 1:500) (Red). DAPI was used for nuclear staining (Blue). Objective: 40x. Perform high pressure antigen retrieval with 0.01M citrate buffer (pH 6.0) prior to IF staining.



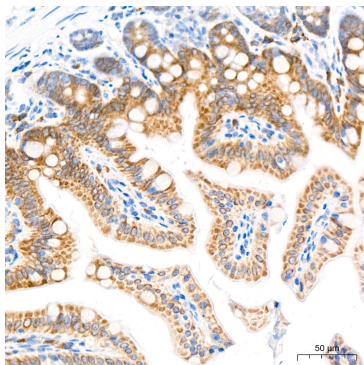
Immunohistochemistry analysis of ADAM15 in paraffin-embedded human colon carcinoma tissue using ADAM15 Rabbit mAb (A6813) at a dilution of 1:200 (40x lens). High pressure antigen retrieval was performed with 0.01 M citrate buffer (pH 6.0) prior to IHC staining.



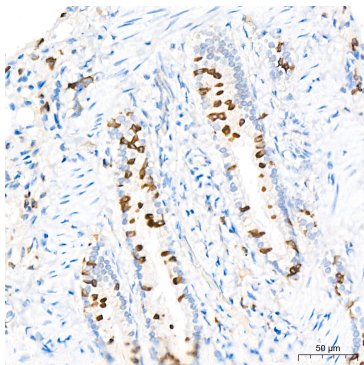
Immunohistochemistry analysis of ADAM15 in paraffin-embedded human liver tissue using ADAM15 Rabbit mAb (A6813) at a dilution of 1:200 (40x lens). High pressure antigen retrieval was performed with 0.01 M citrate buffer (pH 6.0) prior to IHC staining.



Immunohistochemistry analysis of ADAM15 in paraffin-embedded human small intestine tissue using ADAM15 Rabbit mAb (A6813) at a dilution of 1:200 (40x lens). High pressure antigen retrieval was performed with 0.01 M citrate buffer (pH 6.0) prior to IHC staining.



Immunohistochemistry analysis of ADAM15 in paraffin-embedded mouse intestine tissue using ADAM15 Rabbit mAb (A6813) at a dilution of 1:200 (40x lens). High pressure antigen retrieval was performed with 0.01 M citrate buffer (pH 6.0) prior to IHC staining.



Immunohistochemistry analysis of ADAM15 in paraffin-embedded rat lung tissue using ADAM15 Rabbit mAb (A6813) at a dilution of 1:200 (40x lens). High pressure antigen retrieval was performed with 0.01 M citrate buffer (pH 6.0) prior to IHC staining.