

# ABCA1 Rabbit pAb

Catalog No.: A7228

7 Publications

## Basic Information

### Observed MW

### Calculated MW

254kDa

### Category

Primary antibody

### Applications

ELISA, IF/ICC

### Cross-Reactivity

Mouse, Rat

## Background

The membrane-associated protein encoded by this gene is a member of the superfamily of ATP-binding cassette (ABC) transporters. ABC proteins transport various molecules across extra- and intracellular membranes. ABC genes are divided into seven distinct subfamilies (ABC1, MDR/TAP, MRP, ALD, OABP, GCN20, White). This protein is a member of the ABC1 subfamily. Members of the ABC1 subfamily comprise the only major ABC subfamily found exclusively in multicellular eukaryotes. With cholesterol as its substrate, this protein functions as a cholesterol efflux pump in the cellular lipid removal pathway. Mutations in both alleles of this gene cause Tangier disease and familial high-density lipoprotein (HDL) deficiency.

## Recommended Dilutions

IF/ICC

1:50 - 1:200

## Immunogen Information

### Gene ID

19

### Swiss Prot

O95477

### Immunogen

Recombinant fusion protein containing a sequence corresponding to amino acids 1870-2120 of human ABCA1 (NP\_005493.2).

### Synonyms

TGD; ABC1; CERP; ABC-1; HDLDT1; HPALP1; HDLCQTL13; ABCA1

## Contact

☎ | 400-999-6126

✉ | [cn.market@abclonal.com.cn](mailto:cn.market@abclonal.com.cn)

🌐 | [www.abclonal.com.cn](http://www.abclonal.com.cn)

## Product Information

### Source

Rabbit

### Isotype

IgG

### Purification

Affinity purification

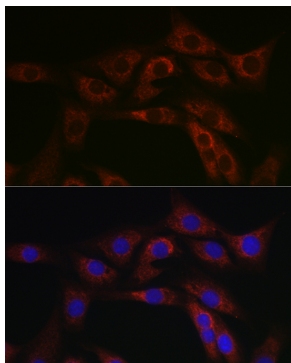
### Storage

Store at -20°C. Avoid freeze / thaw cycles.

Buffer: PBS with 0.01% thimerosal, 50% glycerol, pH7.3.

## Validation Data

---



Immunofluorescence analysis of NIH/3T3 cells using ABCA1 Rabbit pAb (A7228) at dilution of 1:100 (40x lens). Blue: DAPI for nuclear staining.