

# ZNF195 Rabbit pAb

**Catalog No.: A7347**

## Basic Information

### Observed MW

65kDa

### Calculated MW

72kDa

### Category

Primary antibody

### Applications

ELISA, WB, IF/ICC

### Cross-Reactivity

Human, Mouse, Rat

## Background

This gene encodes a protein belonging to the Krueppel C2H2-type zinc-finger protein family. These family members are transcription factors that are implicated in a variety of cellular processes. This gene is located near the centromeric border of chromosome 11p15.5, next to an imprinted domain that is associated with maternal-specific loss of heterozygosity in Wilms' tumors. Alternative splicing results in multiple transcript variants.

## Recommended Dilutions

**WB** 1:500 - 1:2000

**IF/ICC** 1:50 - 1:200

## Immunogen Information

### Gene ID

7748

### Swiss Prot

O14628

### Immunogen

Recombinant fusion protein containing a sequence corresponding to amino acids 1-250 of human ZNF195 (NP\_001123991.1).

### Synonyms

HRF1; ZNFP104; ZNF195

## Contact

☎ | 400-999-6126

✉ | [cn.market@abclonal.com.cn](mailto:cn.market@abclonal.com.cn)

🌐 | [www.abclonal.com.cn](http://www.abclonal.com.cn)

## Product Information

### Source

Rabbit

### Isotype

IgG

### Purification

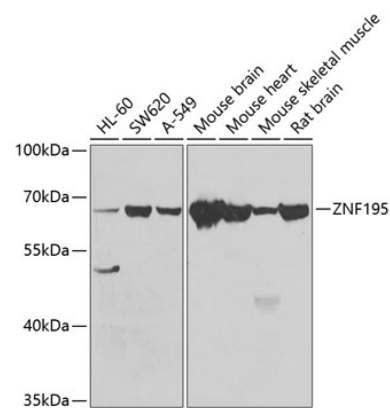
Affinity purification

### Storage

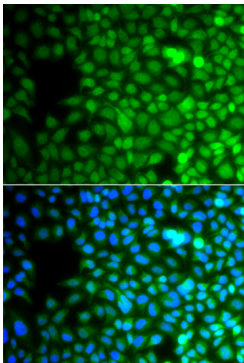
Store at -20°C. Avoid freeze / thaw cycles.

Buffer: PBS with 0.02% sodium azide, 50% glycerol, pH7.3.

## Validation Data



Western blot analysis of extracts of various cell lines, using ZNF195 antibody (A7347) at 1:1000 dilution.  
Secondary antibody: HRP Goat Anti-Rabbit IgG (H+L) (AS014) at 1:10000 dilution.  
Lysates/proteins: 25µg per lane.  
Blocking buffer: 3% nonfat dry milk in TBST.  
Detection: ECL Basic Kit (RM00020).  
Exposure time: 30s.



Immunofluorescence analysis of A549 cells using ZNF195 antibody (A7347). Blue: DAPI for nuclear staining.