

ILF3 Rabbit mAb

Catalog No.: A8186

Recombinant

1 Publications

Basic Information

Observed MW

90kDa/100kDa

Calculated MW

95kDa

Category

Primary antibody

Applications

ELISA, WB, IHC-P

Cross-Reactivity

Human, Mouse, Rat

CloneNo number

ARC1438

Background

This gene encodes a double-stranded RNA (dsRNA) binding protein that complexes with other proteins, dsRNAs, small noncoding RNAs, and mRNAs to regulate gene expression and stabilize mRNAs. This protein (NF90, ILF3) forms a heterodimer with a 45 kDa transcription factor (NF45, ILF2) required for T-cell expression of interleukin 2. This complex has been shown to affect the redistribution of nuclear mRNA to the cytoplasm. Knockdown of NF45 or NF90 protein retards cell growth, possibly by inhibition of mRNA stabilization. In contrast, an isoform (NF110) of this gene that is predominantly restricted to the nucleus has only minor effects on cell growth when its levels are reduced. Alternative splicing results in multiple transcript variants encoding distinct isoforms.

Recommended Dilutions

WB 1:1000 - 1:5000

IHC-P 1:50 - 1:200

Immunogen Information

Gene ID

3609

Swiss Prot

Q12906

Immunogen

A synthetic peptide corresponding to a sequence within amino acids 1-100 of human ILF3 (Q12906).

Synonyms

CBTF; DRBF; MMP4; MPP4; NF90; NFAR; NF110; NF90a; NF90b; NF90c; NFAR2; TCP80; DRBP76; NF110b; NFAR-1; NFAR-2; NFAR90; TCP110; MPP4110; NF90ctv; NFAR110; MPHOSPH4; NF-AT-90; ILF3

Contact

 | 400-999-6126 | cn.market@abclonal.com.cn | www.abclonal.com.cn

Product Information

Source

Rabbit

Isotype

IgG

Purification

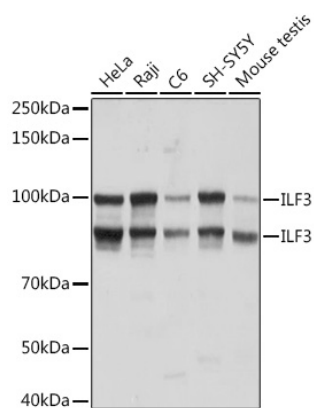
Affinity purification

Storage

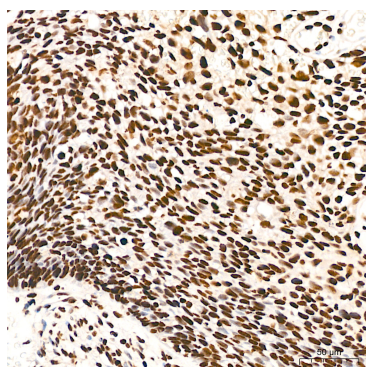
Store at -20°C. Avoid freeze / thaw cycles.

Buffer: PBS with 0.02% sodium azide, 0.05% BSA, 50% glycerol, pH7.3.

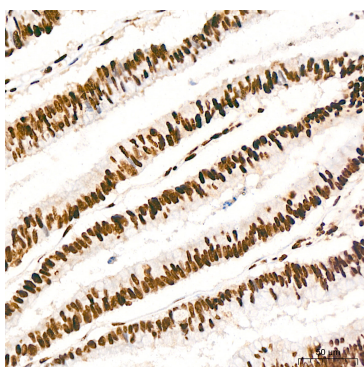
Validation Data



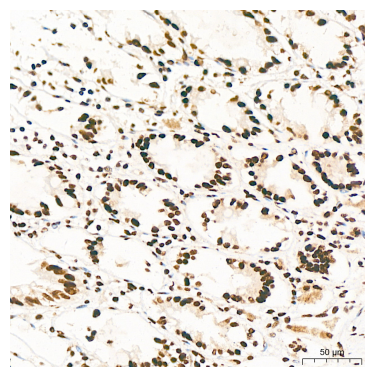
Western blot analysis of various lysates using ILF3 Rabbit mAb (A8186) at 1:3000 dilution. Secondary antibody: HRP Goat Anti-Rabbit IgG (H+L) (AS014) at 1:10000 dilution. Lysates/proteins: 25µg per lane. Blocking buffer: 3% nonfat dry milk in TBST. Detection: ECL Basic Kit (RM00020). Exposure time: 1s.



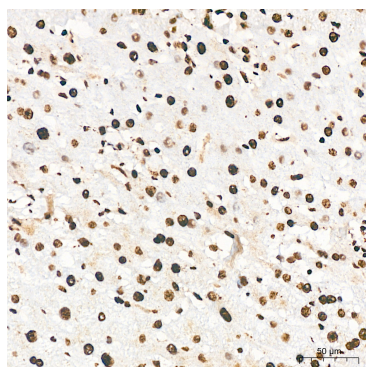
Immunohistochemistry analysis of ILF3 in paraffin-embedded human cervix cancer tissue using ILF3 Rabbit mAb (A8186) at a dilution of 1:200 (40x lens). High pressure antigen retrieval was performed with 0.01 M citrate buffer (pH 6.0) prior to IHC staining.



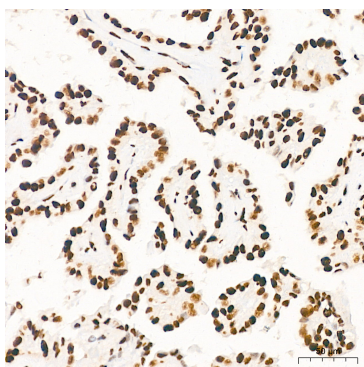
Immunohistochemistry analysis of ILF3 in paraffin-embedded human colon carcinoma tissue using ILF3 Rabbit mAb (A8186) at a dilution of 1:200 (40x lens). High pressure antigen retrieval was performed with 0.01 M citrate buffer (pH 6.0) prior to IHC staining.



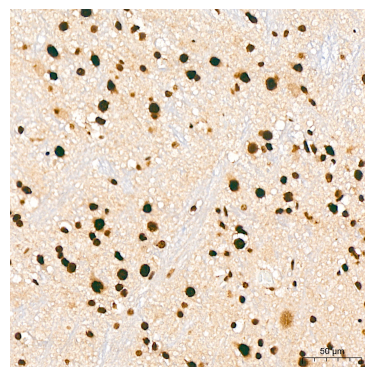
Immunohistochemistry analysis of ILF3 in paraffin-embedded human colon tissue using ILF3 Rabbit mAb (A8186) at a dilution of 1:200 (40x lens). High pressure antigen retrieval was performed with 0.01 M citrate buffer (pH 6.0) prior to IHC staining.



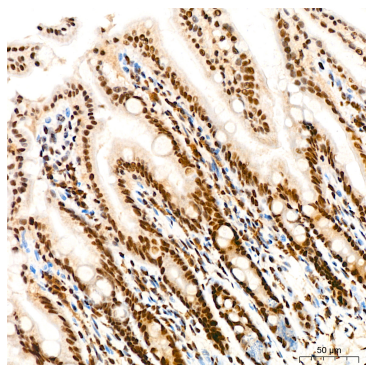
Immunohistochemistry analysis of ILF3 in paraffin-embedded human liver tissue using ILF3 Rabbit mAb (A8186) at a dilution of 1:200 (40x lens). High pressure antigen retrieval was performed with 0.01 M citrate buffer (pH 6.0) prior to IHC staining.



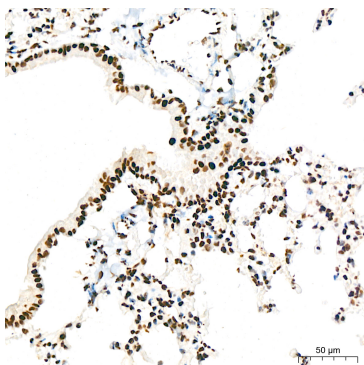
Immunohistochemistry analysis of ILF3 in paraffin-embedded human thyroid cancer tissue using ILF3 Rabbit mAb (A8186) at a dilution of 1:200 (40x lens). High pressure antigen retrieval was performed with 0.01 M citrate buffer (pH 6.0) prior to IHC staining.



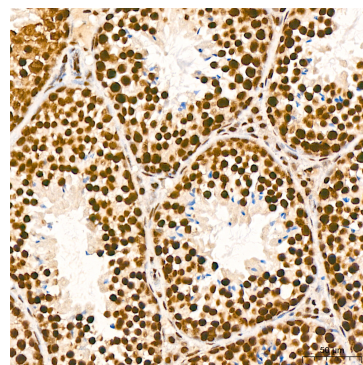
Immunohistochemistry analysis of ILF3 in paraffin-embedded mouse brain tissue using ILF3 Rabbit mAb (A8186) at a dilution of 1:200 (40x lens). High pressure antigen retrieval was performed with 0.01 M citrate buffer (pH 6.0) prior to IHC staining.



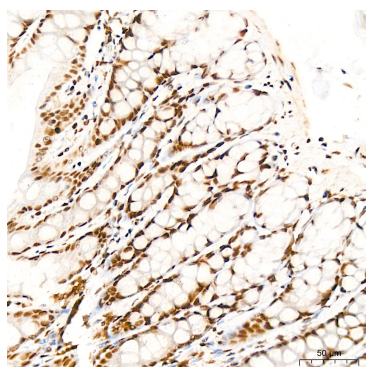
Immunohistochemistry analysis of ILF3 in paraffin-embedded mouse colon tissue using ILF3 Rabbit mAb (A8186) at a dilution of 1:200 (40x lens). High pressure antigen retrieval was performed with 0.01 M citrate buffer (pH 6.0) prior to IHC staining.



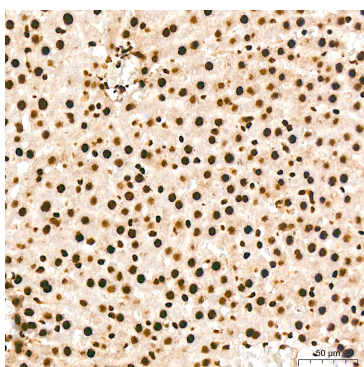
Immunohistochemistry analysis of ILF3 in paraffin-embedded mouse lung tissue using ILF3 Rabbit mAb (A8186) at a dilution of 1:200 (40x lens). High pressure antigen retrieval was performed with 0.01 M citrate buffer (pH 6.0) prior to IHC staining.



Immunohistochemistry analysis of ILF3 in paraffin-embedded mouse testis tissue using ILF3 Rabbit mAb (A8186) at a dilution of 1:200 (40x lens). High pressure antigen retrieval was performed with 0.01 M citrate buffer (pH 6.0) prior to IHC staining.



Immunohistochemistry analysis of ILF3 in paraffin-embedded rat colon tissue using ILF3 Rabbit mAb (A8186) at a dilution of 1:200 (40x lens). High pressure antigen retrieval was performed with 0.01 M citrate buffer (pH 6.0) prior to IHC staining.



Immunohistochemistry analysis of ILF3 in paraffin-embedded rat liver tissue using ILF3 Rabbit mAb (A8186) at a dilution of 1:200 (40x lens). High pressure antigen retrieval was performed with 0.01 M citrate buffer (pH 6.0) prior to IHC staining.