

# Tropomyosin 1 Rabbit mAb

Catalog No.: A8723 **Recombinant**

## Basic Information

### Observed MW

32□35□36□41kDa

### Calculated MW

33kDa

### Category

Primary antibody

### Applications

ELISA,WB,IHC-P,IF/ICC,IP

### Cross-Reactivity

Mouse, Rat

### CloneNo number

ARC1283

## Background

This gene is a member of the tropomyosin family of highly conserved, widely distributed actin-binding proteins involved in the contractile system of striated and smooth muscles and the cytoskeleton of non-muscle cells. Tropomyosin is composed of two alpha-helical chains arranged as a coiled-coil. It is polymerized end to end along the two grooves of actin filaments and provides stability to the filaments. The encoded protein is one type of alpha helical chain that forms the predominant tropomyosin of striated muscle, where it also functions in association with the troponin complex to regulate the calcium-dependent interaction of actin and myosin during muscle contraction. In smooth muscle and non-muscle cells, alternatively spliced transcript variants encoding a range of isoforms have been described. Mutations in this gene are associated with type 3 familial hypertrophic cardiomyopathy and dilated cardiomyopathy 1Y.

## Recommended Dilutions

<b>WB</b>	1:500 - 1:2000
<b>IHC-P</b>	1:50 - 1:200
<b>IF/ICC</b>	1:50 - 1:200
<b>IP</b>	0.5μg-4μg antibody for 400μg-600μg extracts of whole cells

## Contact

	400-999-6126
	cn.market@abclonal.com.cn
	www.abclonal.com.cn

## Immunogen Information

### Gene ID

7168

### Swiss Prot

P09493

### Immunogen

A synthetic peptide corresponding to a sequence within amino acids 185-284 of human Tropomyosin 1 (P09493).

### Synonyms

CMH3; TMSA; CMD1Y; LVNC9; C15orf13; HEL-S-265; HTM-alpha; Tropomyosin 1

## Product Information

### Source

Rabbit

### Isotype

IgG

### Purification

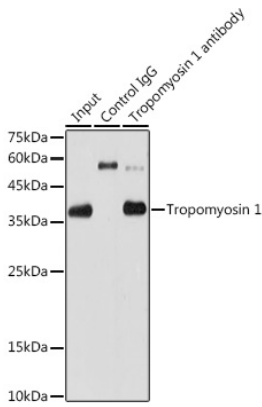
Affinity purification

### Storage

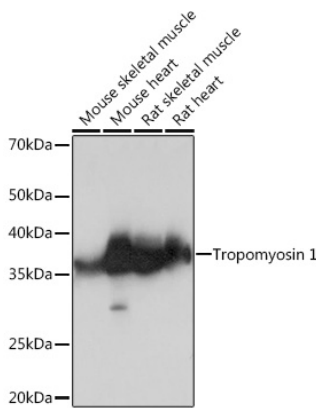
Store at -20°C. Avoid freeze / thaw cycles.

Buffer: PBS with 0.02% sodium azide,0.05% BSA,50% glycerol,pH7.3.

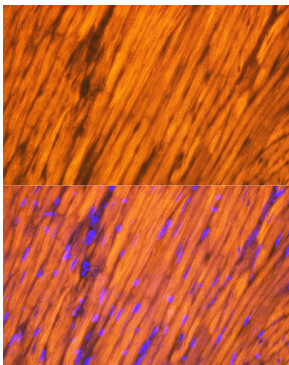
## Validation Data



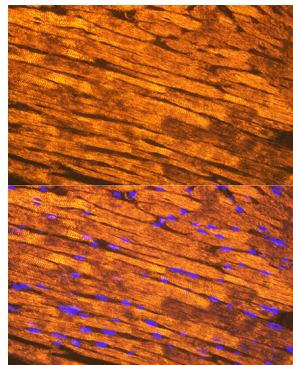
Immunoprecipitation analysis of 600  $\mu$ g extracts of Rat heart using 3  $\mu$ g Tropomyosin 1 Rabbit mAb (A8723). Western blot was performed from the immunoprecipitate using Tropomyosin 1 Rabbit mAb (A8723) at a dilution of 1:1000.



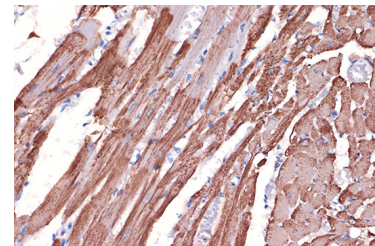
Western blot analysis of various lysates using Tropomyosin 1 Rabbit mAb (A8723) at 1:1000 dilution. Secondary antibody: HRP Goat Anti-Rabbit IgG (H+L) (AS014) at 1:10000 dilution. Lysates/proteins: 25 $\mu$ g per lane. Blocking buffer: 3% nonfat dry milk in TBST. Detection: ECL Basic Kit (RM00020). Exposure time: 3s.



Immunofluorescence analysis of paraffin-embedded rat heart using Tropomyosin 1 Rabbit mAb (A8723) at dilution of 1:100 (40x lens). Secondary antibody: Cy3 Goat Anti-Rabbit IgG (H+L) (AS007) at 1:500 dilution. Blue: DAPI for nuclear staining.



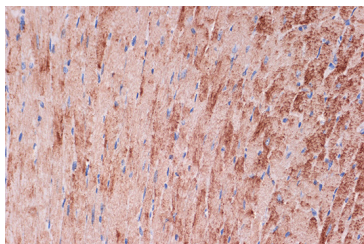
Immunofluorescence analysis of paraffin-embedded mouse heart using Tropomyosin 1 Rabbit mAb (A8723) at dilution of 1:100 (40x lens). Secondary antibody: Cy3 Goat Anti-Rabbit IgG (H+L) (AS007) at 1:500 dilution. Blue: DAPI for nuclear staining.



Immunohistochemistry analysis of paraffin-embedded Rat heart using Tropomyosin 1 Rabbit mAb (A8723) at dilution of 1:100 (40x lens). Perform microwave antigen retrieval with 10 mM Tris/EDTA buffer pH 9.0 before commencing with IHC staining protocol.

## Validation Data

---



Immunohistochemistry analysis of paraffin-embedded Mouse heart using Tropomyosin 1 Rabbit mAb (A8723) at dilution of 1:100 (40x lens). Perform microwave antigen retrieval with 10 mM Tris/EDTA buffer pH 9.0 before commencing with IHC staining protocol.