

ZFYVE9 Rabbit pAb

Catalog No.: A9041

Basic Information

Observed MW

156kDa

Calculated MW

156kDa

Category

Primary antibody

Applications

ELISA, WB

Cross-Reactivity

Human

Background

This gene encodes a double zinc finger motif-containing protein that participates in the transforming growth factor-beta (TGFB) signalling pathway. The encoded protein interacts directly with SMAD2 and SMAD3, and recruits SMAD2 to the TGFB receptor. There are multiple pseudogenes for this gene on chromosomes 2, 15, and X. Alternative splicing results in multiple transcript variants.

Recommended Dilutions

WB 1:200 - 1:2000

Immunogen Information

Gene ID

9372

Swiss Prot

O95405

Immunogen

Recombinant fusion protein containing a sequence corresponding to amino acids 1-260 of human ZFYVE9 (NP_004790.2).

Synonyms

NSP; SARA; MADHIP; SMADIP; PPP1R173; ZFYVE9

Contact

☎ | 400-999-6126

✉ | cn.market@abclonal.com.cn

🌐 | www.abclonal.com.cn

Product Information

Source

Rabbit

Isotype

IgG

Purification

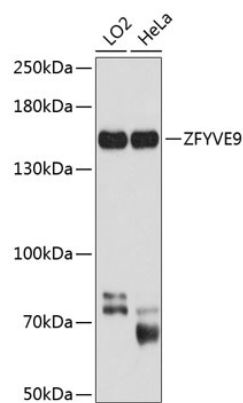
Affinity purification

Storage

Store at -20°C. Avoid freeze / thaw cycles.

Buffer: PBS with 0.02% sodium azide, 50% glycerol, pH7.3.

Validation Data



Western blot analysis of extracts of various cell lines, using ZFYVE9 antibody (A9041) at 1:1000 dilution.
Secondary antibody: HRP Goat Anti-Rabbit IgG (H+L) (AS014) at 1:10000 dilution.
Lysates/proteins: 25µg per lane.
Blocking buffer: 3% nonfat dry milk in TBST.
Detection: ECL Basic Kit (RM00020).
Exposure time: 20s.