

α -Tubulin Mouse mAb

Catalog No.: AC012

82 Publications

Basic Information

Observed MW

50kDa

Calculated MW

50kDa

Category

Loading control antibody

Applications

ELISA, WB, IHC-P, IF/ICC, IP

Cross-Reactivity

Human, Mouse, Rat

CloneNo number

AMC0479

Background

Microtubules of the eukaryotic cytoskeleton perform essential and diverse functions and are composed of a heterodimer of alpha and beta tubulin. The genes encoding these microtubule constituents are part of the tubulin superfamily, which is composed of six distinct families. Genes from the alpha, beta and gamma tubulin families are found in all eukaryotes. The alpha and beta tubulins represent the major components of microtubules, while gamma tubulin plays a critical role in the nucleation of microtubule assembly. There are multiple alpha and beta tubulin genes and they are highly conserved among and between species. This gene encodes an alpha tubulin that is a highly conserved homolog of a rat testis-specific alpha tubulin. Alternatively spliced transcript variants encoding different isoforms have been found for this gene.

Recommended Dilutions

WB 1:5000 - 1:10000**IHC-P** 1:50 - 1:200**IF/ICC** 1:100 - 1:200**IP** 0.5ug-4ug antibody for
200ug-400ug extracts of
whole cells

Immunogen Information

Gene ID

7277

Swiss Prot

P68366

ImmunogenRecombinant protein of human α -Tubulin**Synonyms**ALS22; TUBA1; H2-ALPHA; α -Tubulin

Contact

 | 400-999-6126 | cn.market@abclonal.com.cn | www.abclonal.com.cn

Product Information

Source

Mouse

Isotype

IgG1

Purification

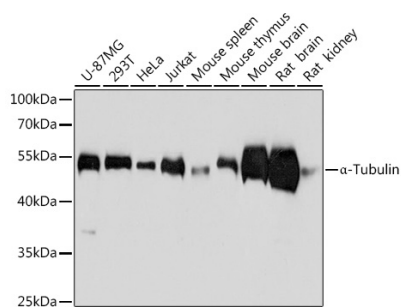
Affinity purification

Storage

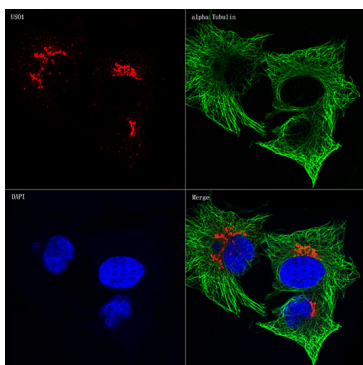
Store at -20°C. Avoid freeze / thaw cycles.

Buffer: PBS with 0.02% sodium azide, 1% BSA, 50% glycerol, pH7.3.

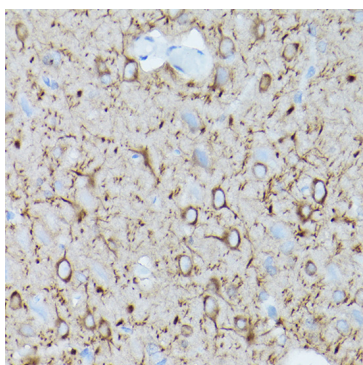
Validation Data



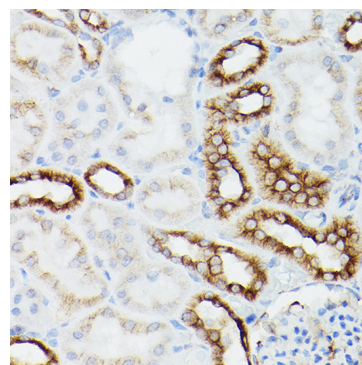
Western blot analysis of various lysates using α -Tubulin Mouse mAb (AC012) at 1:5000 dilution.
 Secondary antibody: HRP Goat Anti-Mouse IgG (H+L) (AS003) at 1:10000 dilution.
 Lysates/proteins: 25 μ g per lane.
 Blocking buffer: 3% nonfat dry milk in TBST.
 Detection: ECL Basic Kit (RM00020).
 Exposure time: 5s.



Confocal imaging of HeLa cells using α -Tubulin Mouse mAb (AC012, dilution 1:200)(Green). The cells were counterstained with USO1 Rabbit mAb (A20950, dilution 1:100) (Red). DAPI was used for nuclear staining (blue). Objective: 60x.



Immunohistochemistry analysis of α -Tubulin in paraffin-embedded mouse brain using α -Tubulin Mouse mAb (AC012) at dilution of 1:100 (40x lens). Perform high pressure antigen retrieval with 10 mM citrate buffer pH 6.0 before commencing with IHC staining protocol.



Immunohistochemistry analysis of α -Tubulin in paraffin-embedded mouse kidney using α -Tubulin Mouse mAb (AC012) at dilution of 1:100 (40x lens). Perform high pressure antigen retrieval with 10 mM citrate buffer pH 6.0 before commencing with IHC staining protocol.